



Green Vale, W5

£449,950

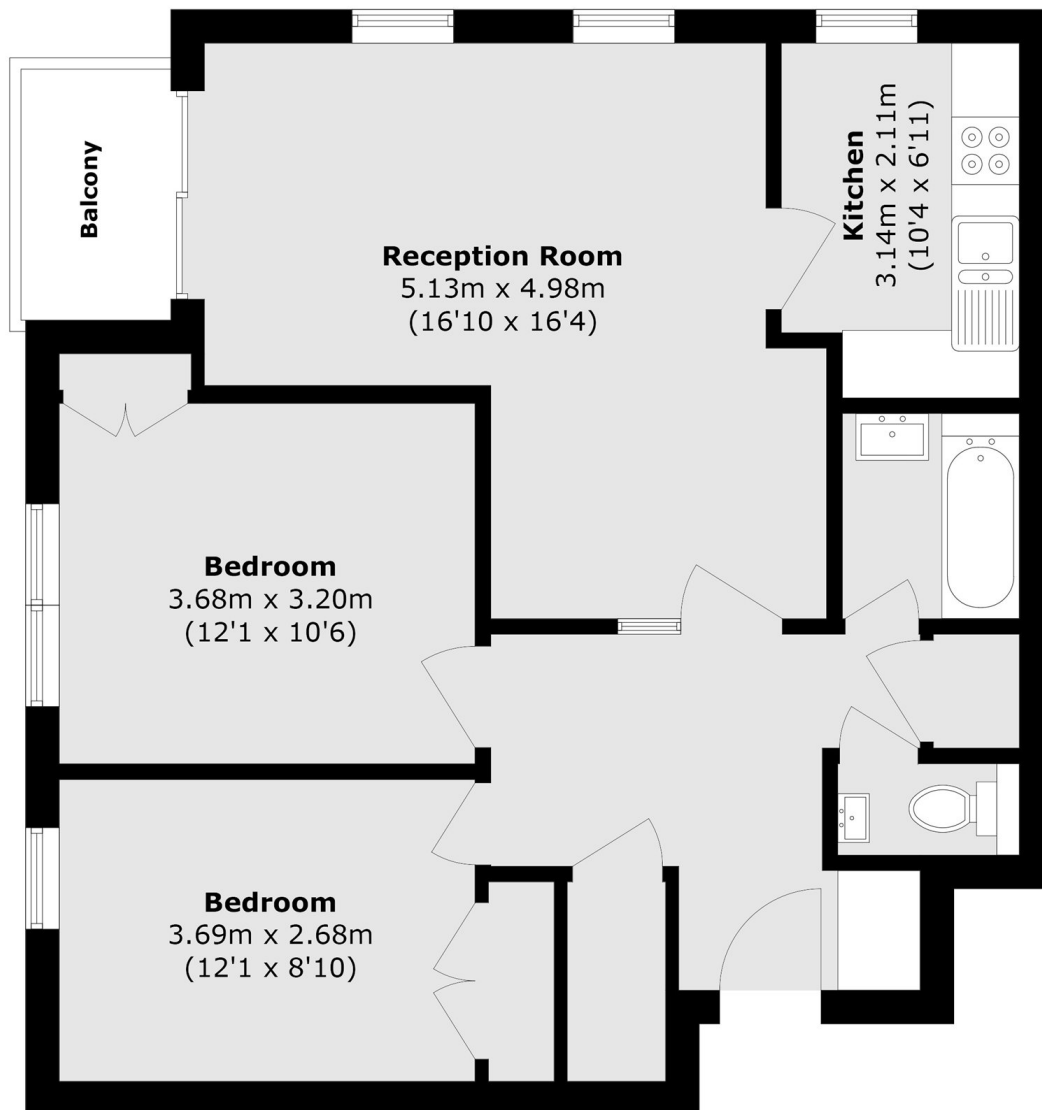
A well-appointed two-bedroom purpose-built apartment offering a private garage, balcony, and far-reaching east-facing views towards Central London. Presented in excellent order, it has the rare pleasure of a front-row London skyline outlook.

Moments from North Ealing station (Piccadilly Line), with Ealing Broadway's shops and Elizabeth Line connections close by. Outstanding local schools include Ada Lovelace CoE High School, Ellen Wilkinson School for Girls, and Holy Family Catholic Primary School.

Features

- Two Double Bedrooms
- No Onward Chain
- Fantastic Views
- Great Condition
- Lift Access
- Garage

Green Vale, London, W5



Total area (approx.): 71.3 sq. m (767.4 sq. ft)
Balcony area (approx.): 2.9 sq. m (31.2 sq. ft)