



34 Malthouse Lane
Ashover, Chesterfield, S45 0AL
Guide Price £260,000



34 Malthouse Lane

Ashover, Chesterfield, S45 0AL

£260,000 - £270,000 (Guide price). Situated right in the heart of the incredibly sought after village of Ashover, within a stone's throw of the village's wealth of local amenities and surrounded by stunning countryside walks, is this well-presented 2 bedroom semi-detached property, enjoying a fantastic plot with gardens surrounding the home.

Offering 645 sqft of accommodation over 2 storeys, the property features a stylish kitchen with integrated oven and induction hob, dual aspect dining lounge with patio doors onto the garden, spacious bedrooms and a modern, fully tiled shower room.

Externally the property benefits from a corner position, with gardens to both the front, side and rear with an outbuilding providing storage.

The ground floor comprises; entrance hallway, stylish kitchen with integrated oven and induction hob, understairs storage, dual aspect dining lounge with patio doors into the garden.

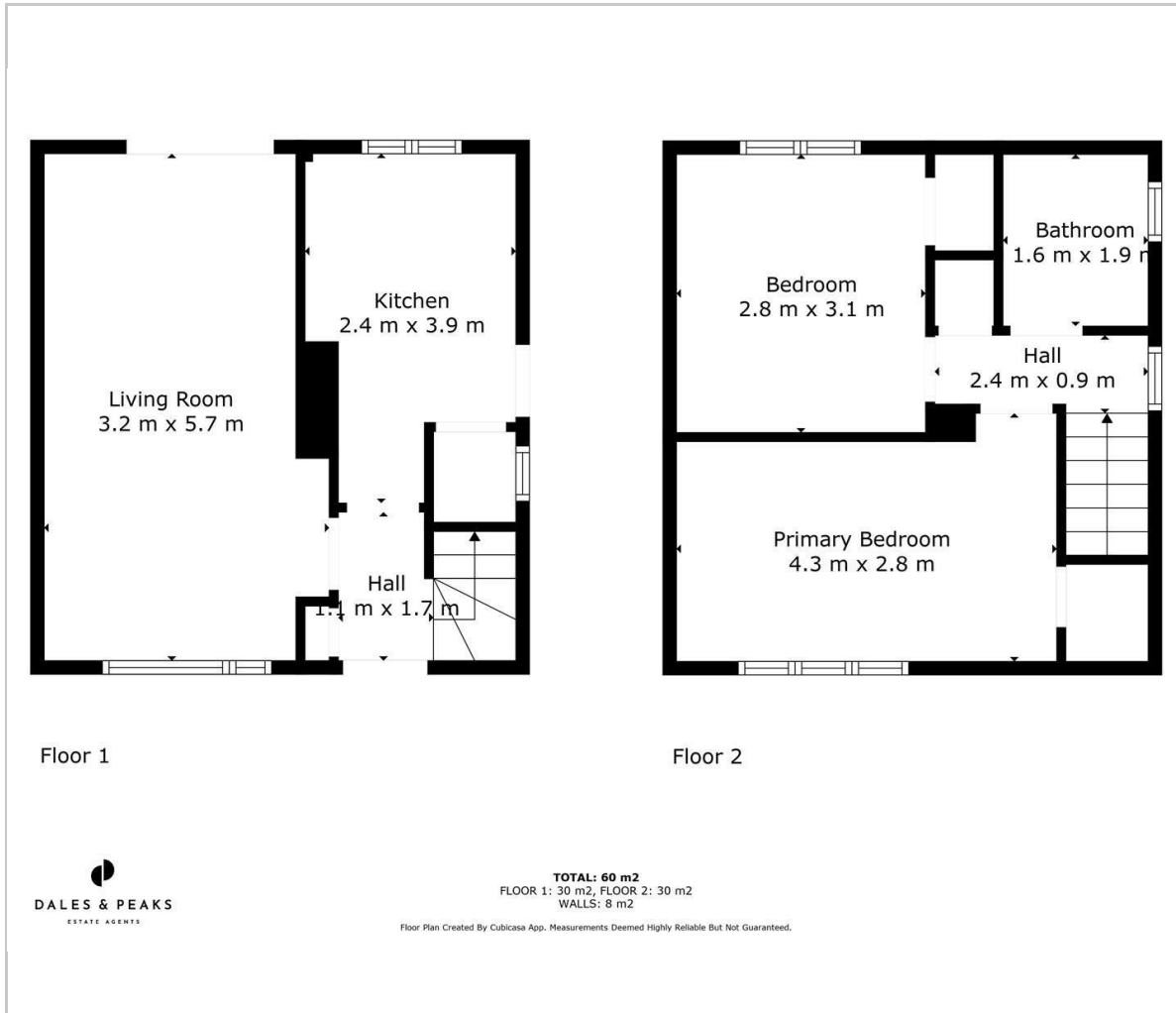
The first floor comprises; modern fully tiled shower room, 2 generously sized bedrooms.

Dales & Peaks ForwardMove please read





Floor Plan



Viewing

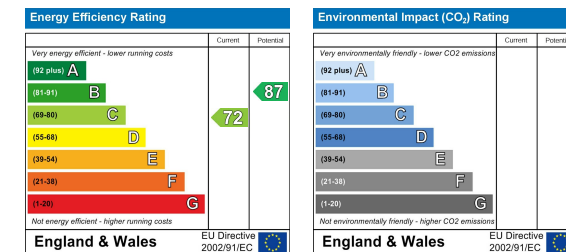
Please contact our Chesterfield Office on 01246 567540 if you wish to arrange a viewing appointment for this property or require further information.

These particulars, whilst believed to be accurate are set out as a general outline only for guidance and do not constitute any part of an offer or contract. Intending purchasers should not rely on them as statements of representation of fact, but must satisfy themselves by inspection or otherwise as to their accuracy. No person in this firm's employment has the authority to make or give any representation or warranty in respect of the property.

Area Map



Energy Efficiency Graph



131 Chatsworth Road, Chesterfield, Derbyshire, S40 2AP
 T: 01246 567540



E: info@dalesandpeaks.co.uk
 www.dalesandpeaks.co.uk