



CLIVEPEARCE
Now you're moving

3 Bedrooms

Bungalow - Detached

Guide Price

£750,000

Located in

Redruth



www.clivepearceproperty.com



Busveal

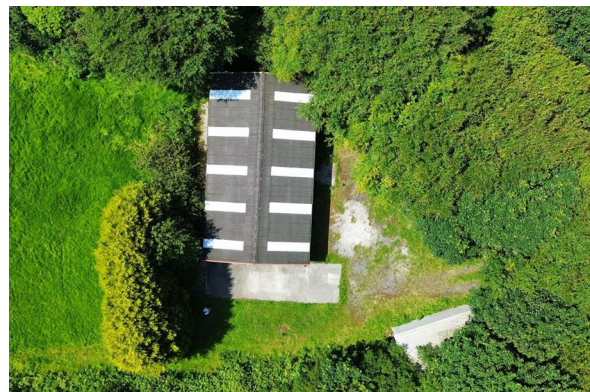
Redruth | | TR16 5HF



A spacious and well presented detached three bedroom bungalow with integral garage located in grounds of approximately 3 acres with a large outbuilding (former purpose built dog training school), two paddocks, sunny gardens and a wooded copse. Superb semi rural location near Gwennap Pit and not far from Redruth and St Day.

Busveal

£750,000 Freehold




- Bungalow with land and outbuilding
- Three bedroom detached bungalow
- Approximately 3 acres in total
- Useful outbuilding (former dog training school)
- Delightful location near Gwennap Pit
- Ample driveway parking plus garage
- Gardens plus two paddocks
- Fantastic potential for future development subject to consent

Council Tax Band D

Local Authority

Agents Note: Whilst every care has been taken to prepare these particulars, they are for guidance purposes only. All measurements are approximate and are for general guidance purposes only and whilst every care has been taken to ensure their accuracy, they should not be relied upon and potential buyers/tenants are advised to recheck the measurements.

Energy Efficiency Rating		
	Current	Potential
<i>Very energy efficient - lower running costs</i>		
(92 plus) A		
(81-91) B		
(69-80) C		
(55-68) D		
(39-54) E		
(21-38) F		
(1-20) G		
<i>Not energy efficient - higher running costs</i>		
England & Wales	EU Directive 2002/91/EC	

31 Lemon Street
Truro
Cornwall
TR1 2LS



CLIVEPEARCE
Now you're moving

hello@clivepearceproperty.com

01872 272622

www.clivepearceproperty.com