



Gwynne House

94 Lower Sloane Street, SW1W

£3,141.67 per month
(£725 per week)

A modern one bedroom apartment situated on the second floor (with lift) of a well maintained building located only moments away from Sloane Square. Circa 506sqft.



Gwynne House

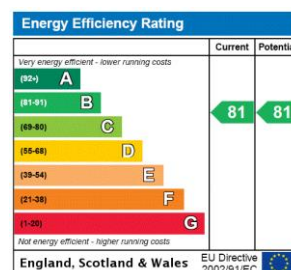
94 Lower Sloane Street, SW1W

- One bedroom apartment
- Unfurnished
- Lift
- Excellent location

A modern one bedroom apartment situated on the second floor (with lift) of a well maintained building located only moments away from Sloane Square. Circa 506sqft.

Gwynn House is ideally located just minutes from Sloane Square for access to the tube as well as being just minutes from the King's Road for access to the many shops, restaurants, bars and cafes that Chelsea has to offer.

Minimum Term: 12 months
Deposit Required: £3,625.00
Local Authority: Kensington and Chelsea
Council Tax Band: F
EPC Rating: B
Unfurnished



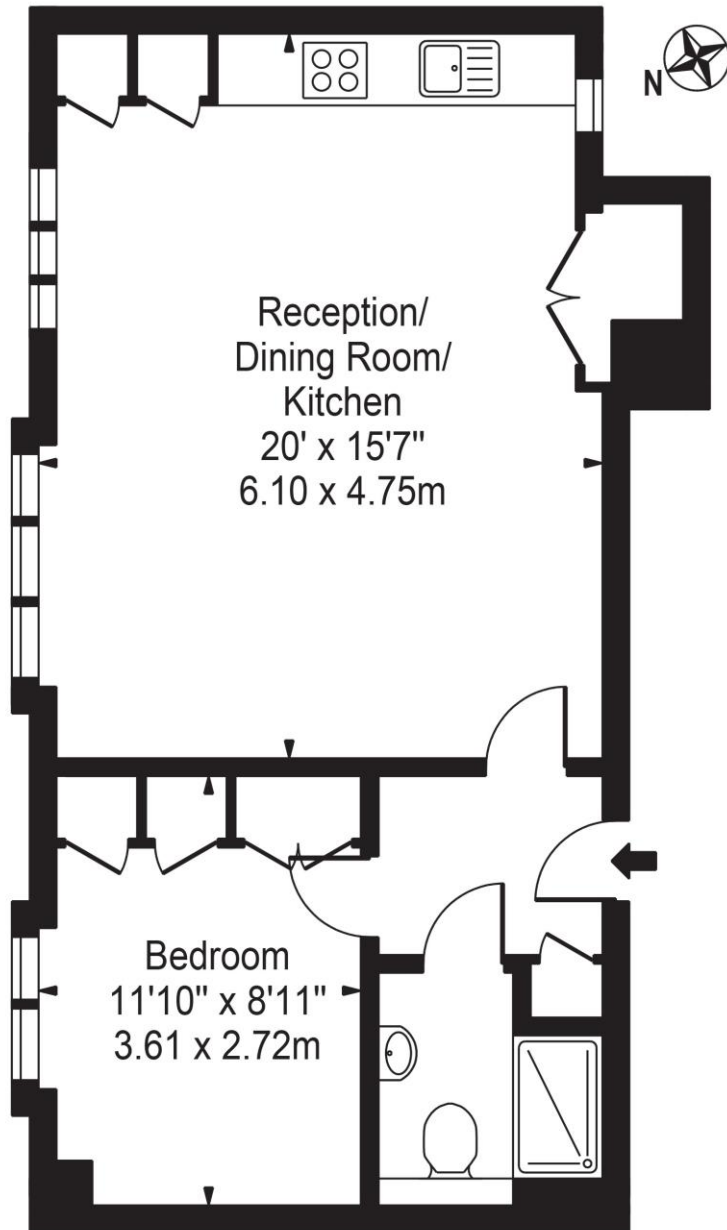
Chestertons Chelsea Lettings

17 Cale Street
London
SW3 3QR
chelsealettingsusers@chestertons.co.uk
02075944750
chestertons.co.uk

Additional tenant charges apply (fees apply to non-AST tenancies only)
Tenancy Agreement Fee: £300
References per Tenant/Guarantor: £60
Inventory check (approx. £100 – £250 inc. VAT)
chestertons.co.uk/property-to-rent/applicable-fees

Gwynn House

Approx. Gross Internal Area 506 Sq Ft - 47.01 Sq M



Second Floor

For Illustration Purposes Only - Not To Scale

This floor plan should be used as a general outline for guidance only and does not constitute in whole or in part an offer or contract. Any intending purchaser or lessee should satisfy themselves by inspection, searches, enquiries and full survey as to the correctness of each statement. Any areas, measurements or distances quoted are approximate and should not be used to value a property or be the basis of any sale or let.

