



70b Gestridge Road, Kingsteignton - TQ12 3HH

£130,000 Leasehold

No Onward Chain • First Floor Flat • One Double Bedroom • Open plan living area • Modern kitchen units • Large windows with natural light • Contemporary tiled bathroom • Off-road parking • Spacious living area • Gas Central Heating



This charming one-bedroom, first-floor apartment in Kingsteignton, Newton Abbot, is a perfect property for a first-time buyer, anyone looking to downsize, or as a buy-to-let investment. The well-presented apartment features a private entrance with a UPVC front door and stairs leading up to the apartment. The open-plan lounge/kitchen is bright and airy, with dual-aspect windows that allow natural light to flood the room. The modern kitchen includes space for a tall fridge freezer, plumbing for a washing machine, matching base and wall units, ample worktop space, and a breakfast bar. It also features a stainless-steel sink with one and a half bowls and a mixer tap, as well as an electric oven with an extractor fan and stainless-steel splashback.

The double bedroom has two UPVC windows to the rear and side of the property, carpeted flooring, and painted walls. The shower room comprises a corner shower cubicle, a hand wash basin, and a low-level WC. There is also a cupboard housing the boiler.

This property also includes an off-road parking space.



Measurements

Lounge/Kitchen/Diner - 19'05 × 14'06 (5.79m x 4.27m)

Bedroom - 12'03 × 9'11 (3.66m x 2.74m)

Shower Room - 8'04 × 4'09 (2.44m x 1.22m)



Important Information

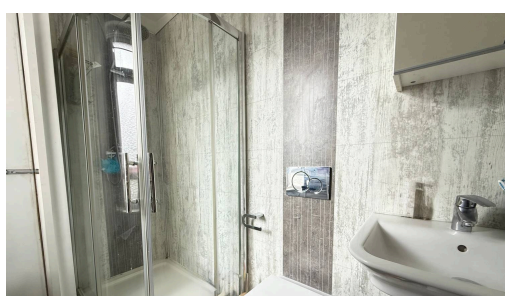
Broadband Speed - Ultrafast 1800 Mbps (According to OFCOM)

Teignbridge Council Tax Band A (£1662.29 2025/2026)

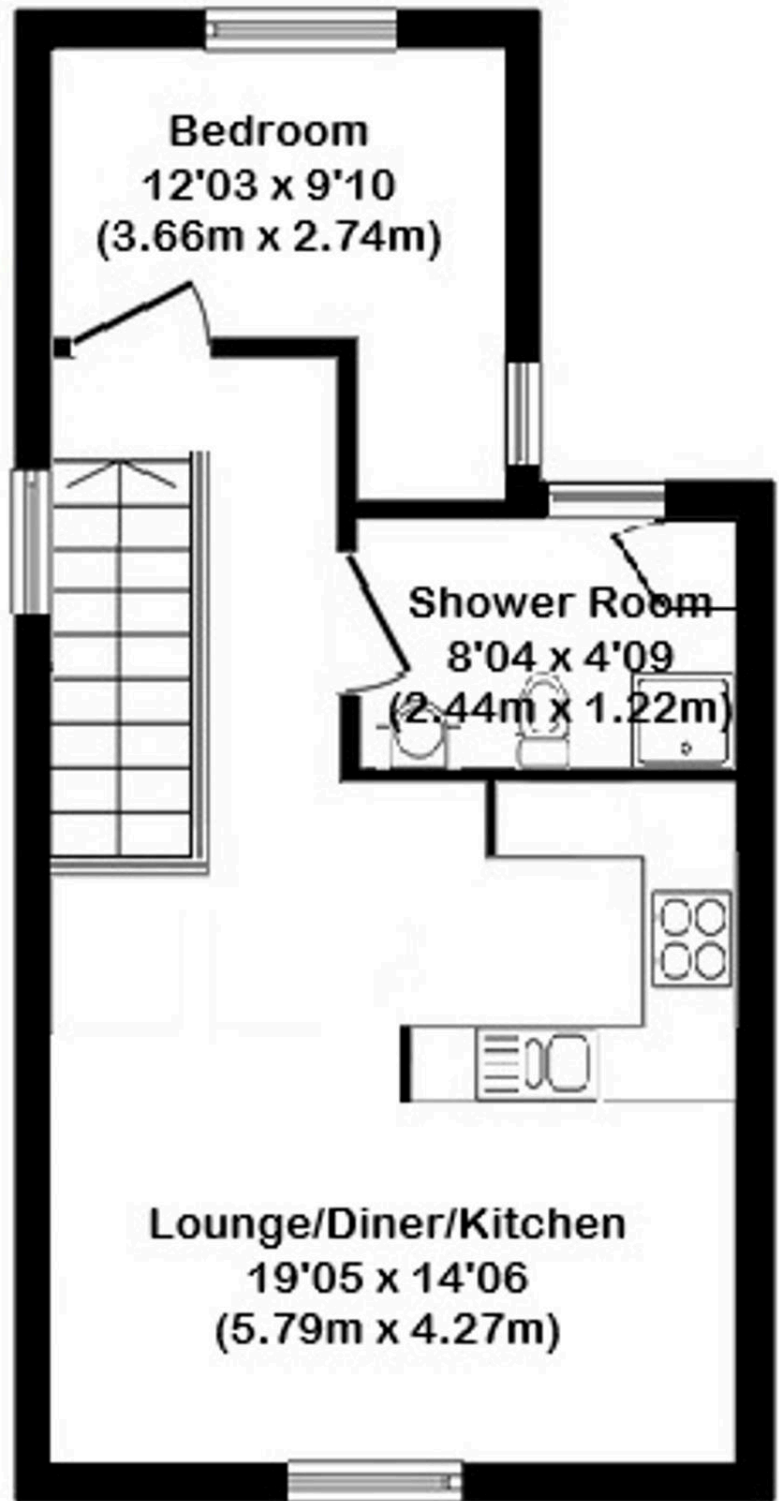
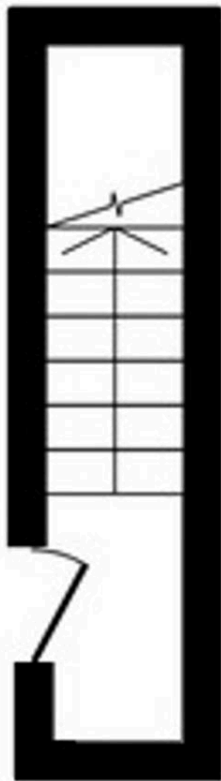
EPC Rating C

Mains Gas, Water, Electric and Sewerage Supplied

The Property is Leasehold



Energy Efficiency Rating		
	Current	Potential
<i>Very energy efficient - lower running costs</i>		
(92+) A		
(81-91) B		
(69-80) C	74	75
(55-68) D		
(39-54) E		
(21-38) F		
(1-20) G		
<i>Not energy efficient - higher running costs</i>		
England, Scotland & Wales	EU Directive 2002/91/EC	



Whilst every attempt has been made to ensure the accuracy of the floorplan contained her, measurements of rooms etc are approximate and no responsibility will be taken for any error.