

1 Badgers Close

4 BEDROOM HOUSE - 201m² (2,164ft²)



BEDROOMS 4

BATHROOMS 3

PARKING BAYS 5

Nestled in the heart of the picturesque village of Charing, this exceptional four-bedroom luxury family home forms part of an exclusive new development of just seven beautifully crafted residences.

Designed with modern living in mind, the property offers generous open-plan living spaces, high-spec finishes throughout, and a private landscaped garden—perfect for family life and entertaining.

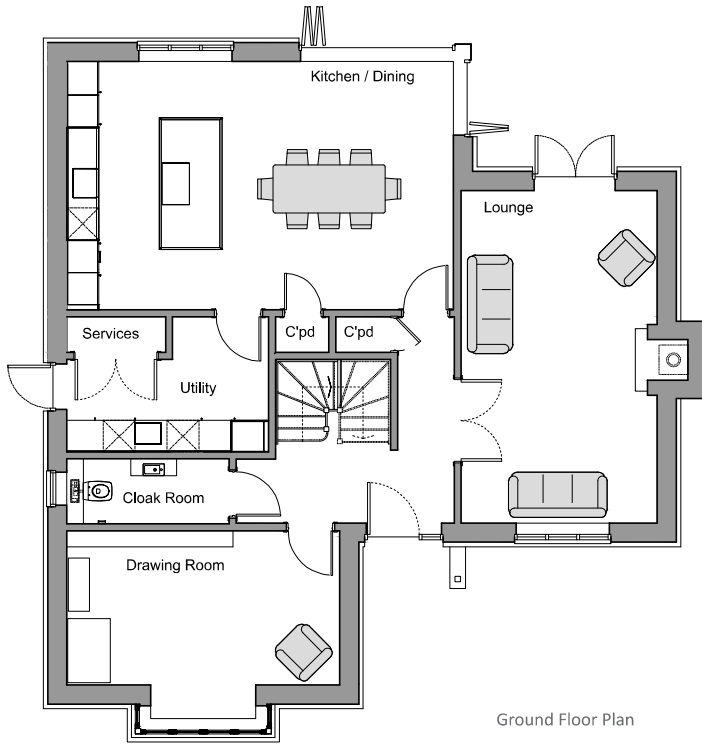
Set within a peaceful, semi-rural location yet conveniently close to local amenities, schools, and excellent transport links, this stunning new build blends countryside charm with contemporary comfort.



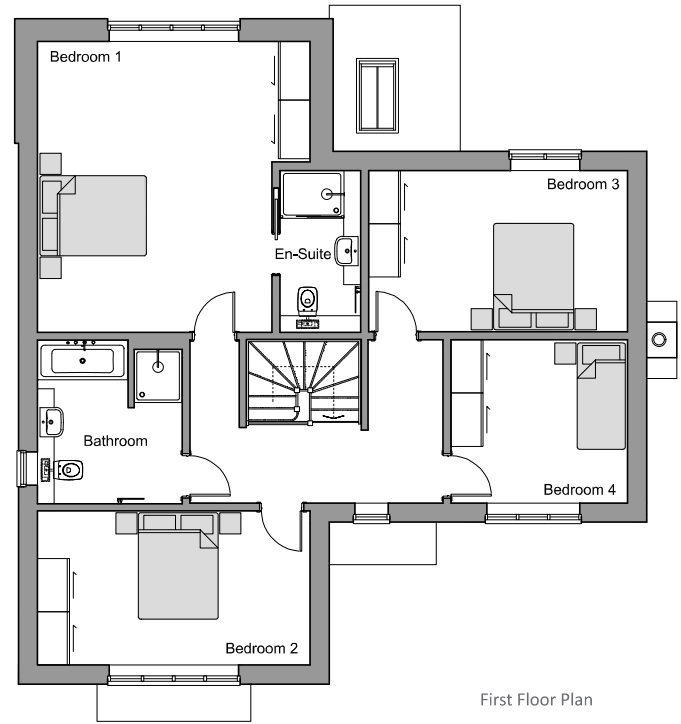
Computer generated imagery is included for guidance only. The properties may vary in terms of elevational design details, position, size and materials used.

1 Badgers Close

4 BEDROOM HOUSE - 201m² (2,164ft²)



Ground Floor Plan



First Floor Plan

Room	Metric	Imperial
Lounge	6250 x 3680mm	20' 06" x 12' 01"
Kitchen / Dining	7263 x 4662mm	23' 10" x 15' 04"
Drawing Room	5125 x 2893mm	16' 10" x 09' 06"
Bedroom 1	5462 x 4408mm	17' 11" x 14' 06"
Bedroom 2	5125 x 2893mm	16' 10" x 09' 06"
Bedroom 3	4869 x 3033mm	15' 00" x 09' 11"
Bedroom 4	3321 x 3069mm	10' 11" x 10' 01"

Dimensions are for guidance only and may vary.

The 2 storey property offers contemporary living/ dining with fitted kitchen and integrated appliances.

The ground floor comprises the living area, drawing room and separate fitted kitchen / dining area with corner bi-fold door to garden.

The upper floor comprises four bedrooms, one with en-suite and the family bathroom.



2 Badgers Close

4 BEDROOM HOUSE - 201m² (2,164ft²)



BEDROOMS 4

BATHROOMS 3

PARKING BAYS 5

Nestled in the heart of the picturesque village of Charing, this exceptional four-bedroom luxury family home forms part of an exclusive new development of just seven beautifully crafted residences.

Designed with modern living in mind, the property offers generous open-plan living spaces, high-spec finishes throughout, and a private landscaped garden—perfect for family life and entertaining.

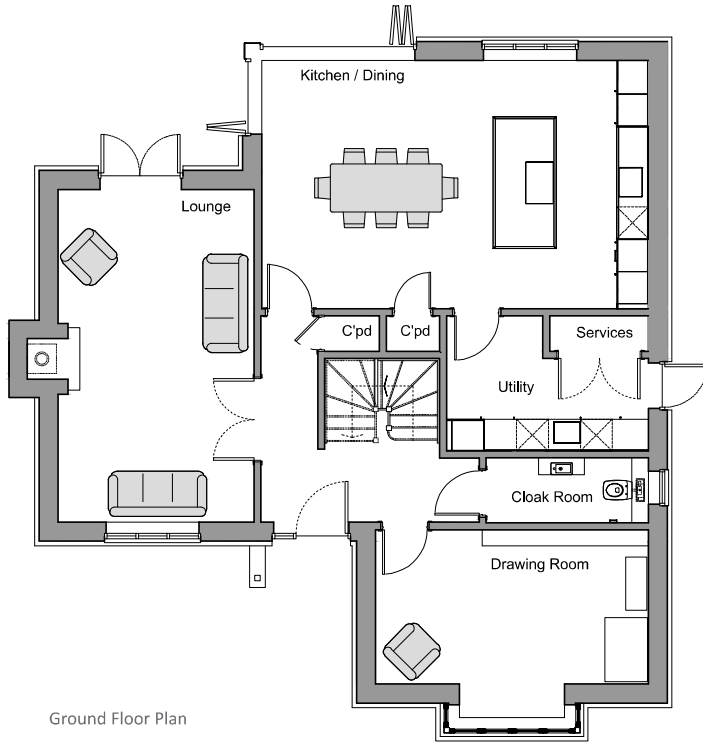
Set within a peaceful, semi-rural location yet conveniently close to local amenities, schools, and excellent transport links, this stunning new build blends countryside charm with contemporary comfort.



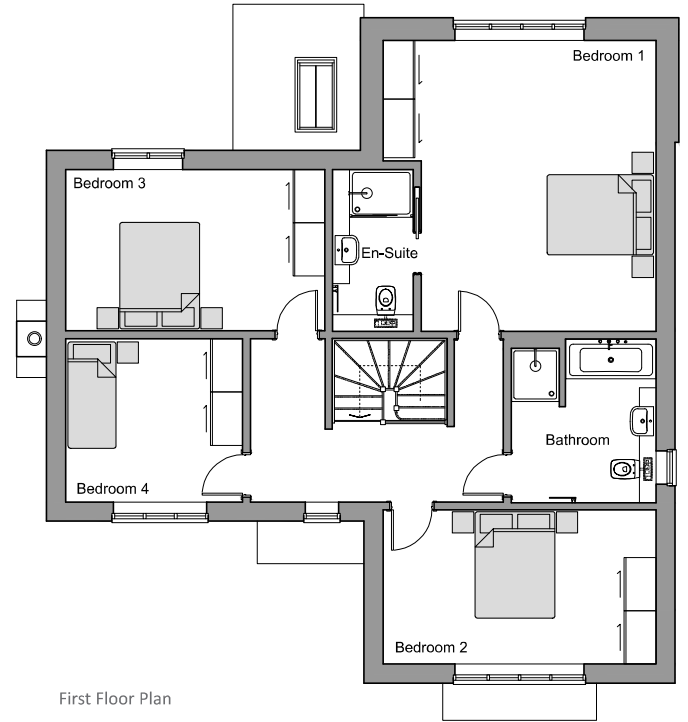
Computer generated imagery is included for guidance only. The properties may vary in terms of elevational design details, position, size and materials used.

2 Badgers Close

4 BEDROOM HOUSE - 201m² (2,164ft²)



Ground Floor Plan



First Floor Plan

Room	Metric	Imperial
Lounge	6250 x 3680mm	20' 06" x 12' 01"
Kitchen / Dining	7263 x 4662mm	23' 10" x 15' 04"
Drawing Room	5125 x 2893mm	16' 10" x 09' 06"
Bedroom 1	5462 x 4408mm	17' 11" x 14' 06"
Bedroom 2	5125 x 2893mm	16' 10" x 09' 06"
Bedroom 3	4869 x 3033mm	15' 00" x 09' 11"
Bedroom 4	3321 x 3069mm	10' 11" x 10' 01"

Dimensions are for guidance only and may vary.

The 2 storey property offers contemporary living/ dining with fitted kitchen and integrated appliances.

The ground floor comprises the living area, drawing room and separate fitted kitchen / dining area with corner bi-fold door to garden.

The upper floor comprises four bedrooms, one with en-suite and the family bathroom.



3 Badgers Close

4 BEDROOM HOUSE - 194m² (2,085ft²)



BEDROOMS 4

BATHROOMS 4

PARKING BAYS 6

Nestled in the heart of the picturesque village of Charing, this exceptional four-bedroom luxury family home forms part of an exclusive new development of just seven beautifully crafted residences.

Designed with modern living in mind, the property offers generous open-plan living spaces, high-spec finishes throughout, and a private landscaped garden—perfect for family life and entertaining.

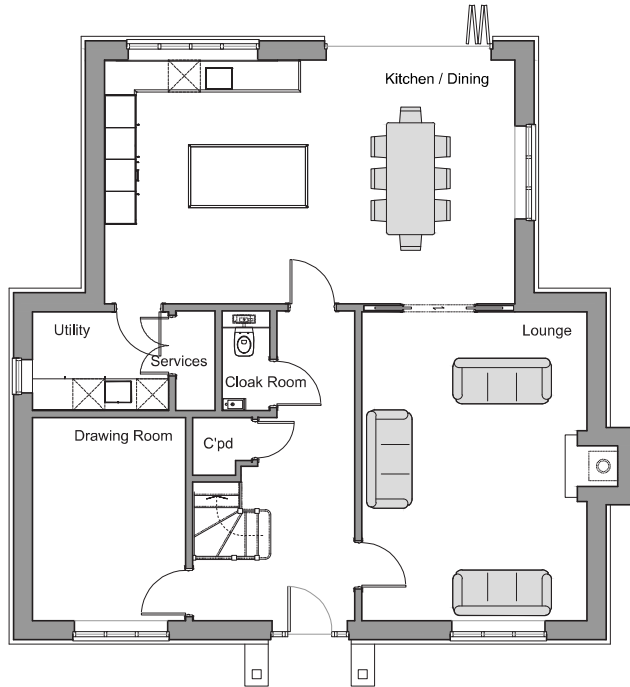
Set within a peaceful, semi-rural location yet conveniently close to local amenities, schools, and excellent transport links, this stunning new build blends countryside charm with contemporary comfort.



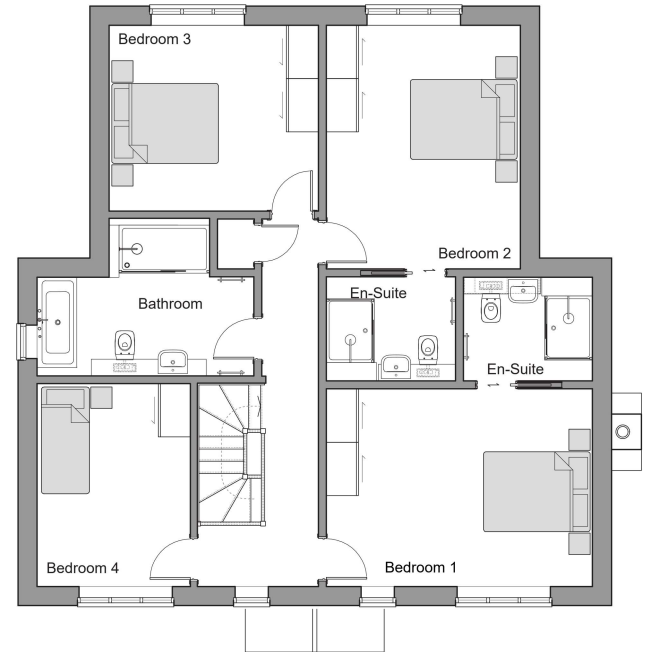
Computer generated imagery is included for guidance only. The properties may vary in terms of elevational design details, position, size and materials used.

3 Badgers Close

4 BEDROOM HOUSE - 194m² (2,085ft²)



Ground Floor Plan



First Floor Plan

Room	Metric	Imperial
Lounge	5800 x 4232mm	19' 00" x 13' 11"
Kitchen / Dining	7713 x 4580mm	25' 04" x 15' 00"
Drawing Room	3813 x 2875mm	12' 06" x 09' 05"
Bedroom 1	4988 x 3706mm	16' 04" x 12' 02"
Bedroom 2	4571 x 3639mm	15' 00" x 11' 11"
Bedroom 3	3926 x 3486mm	12' 11" x 11' 05"
Bedroom 4	3803 x 2875mm	12' 06" x 09' 05"

Dimensions are for guidance only and may vary.

The 2 storey property offers contemporary living/ dining with fitted kitchen and integrated appliances.

The ground floor comprises the living area, drawing room and separate fitted kitchen / dining area with corner bi-fold door to garden.

The upper floor comprises four bedrooms, two with en-suites and the family bathroom.



4 Badgers Close

4 BEDROOM HOUSE - 176m² (1,890ft²)



BEDROOMS 4

BATHROOMS 3

PARKING BAYS 5

Nestled in the heart of the picturesque village of Charing, this exceptional four-bedroom luxury family home forms part of an exclusive new development of just seven beautifully crafted residences.

Designed with modern living in mind, the property offers generous open-plan living spaces, high-spec finishes throughout, and a private landscaped garden—perfect for family life and entertaining.

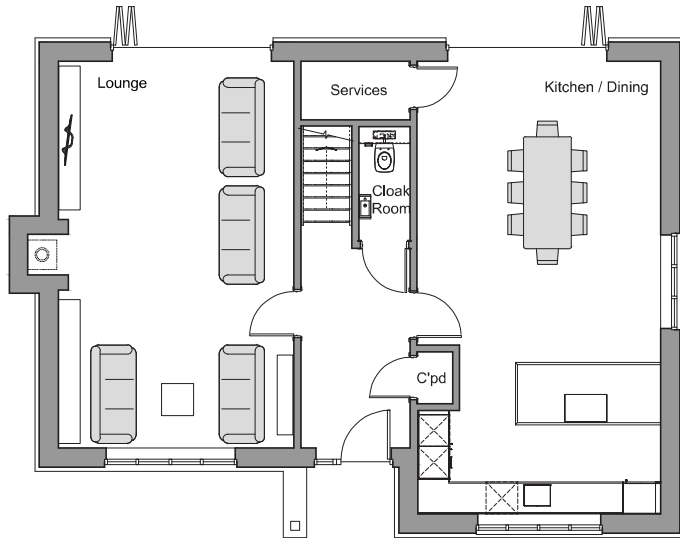
Set within a peaceful, semi-rural location yet conveniently close to local amenities, schools, and excellent transport links, this stunning new build blends countryside charm with contemporary comfort.



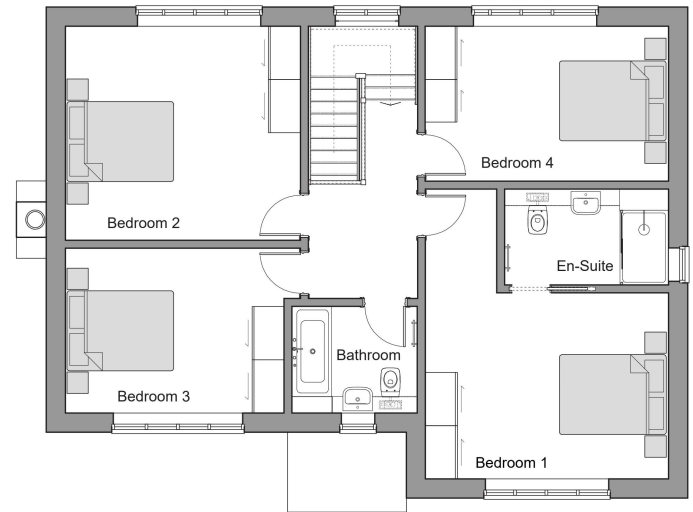
Computer generated imagery is included for guidance only. The properties may vary in terms of elevational design details, position, size and materials used.

4 Badgers Close

4 BEDROOM HOUSE - 176m² (1,890ft²)



Ground Floor Plan



First Floor Plan

Room	Metric	Imperial
Lounge	7262 x 4425mm	23' 10" x 14' 06"
Kitchen / Dining	8500 x 4578mm	27' 11" x 15' 00"
Bedroom 1	4563 x 3495mm	15' 00" x 11' 06"
Bedroom 2	4407 x 4019mm	14' 06" x 13' 02"
Bedroom 3	4101 x 3096mm	13' 05" x 10' 02"
Bedroom 4	4569 x 2909mm	15' 00" x 09' 07"

Dimensions are for guidance only and may vary.

The 2 storey property offers contemporary living/ dining with fitted kitchen and integrated appliances.

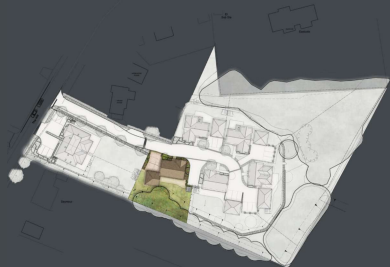
The ground floor comprises the living area and separate fitted kitchen / dining area with bi-fold doors to garden.

The upper floor comprises four bedrooms, one with en-suite and the family bathroom.



5 Badgers Close

4 BEDROOM HOUSE - 176m² (1,890ft²)



BEDROOMS 4

BATHROOMS 3

PARKING BAYS 5

Nestled in the heart of the picturesque village of Charing, this exceptional four-bedroom luxury family home forms part of an exclusive new development of just seven beautifully crafted residences.

Designed with modern living in mind, the property offers generous open-plan living spaces, high-spec finishes throughout, and a private landscaped garden—perfect for family life and entertaining.

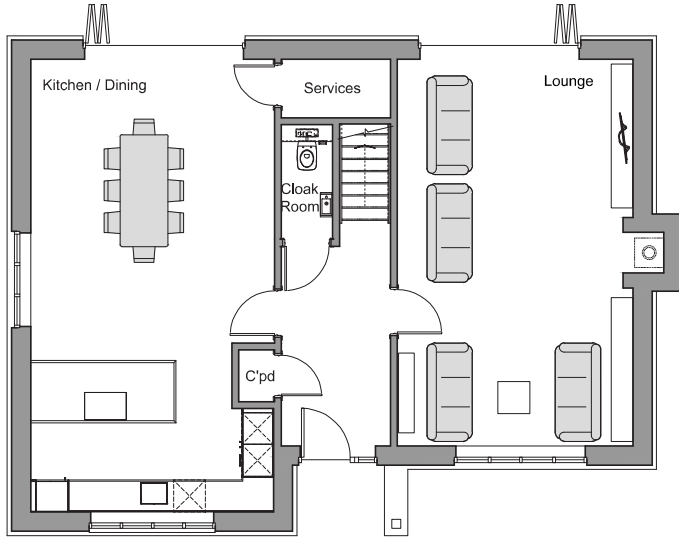
Set within a peaceful, semi-rural location yet conveniently close to local amenities, schools, and excellent transport links, this stunning new build blends countryside charm with contemporary comfort.



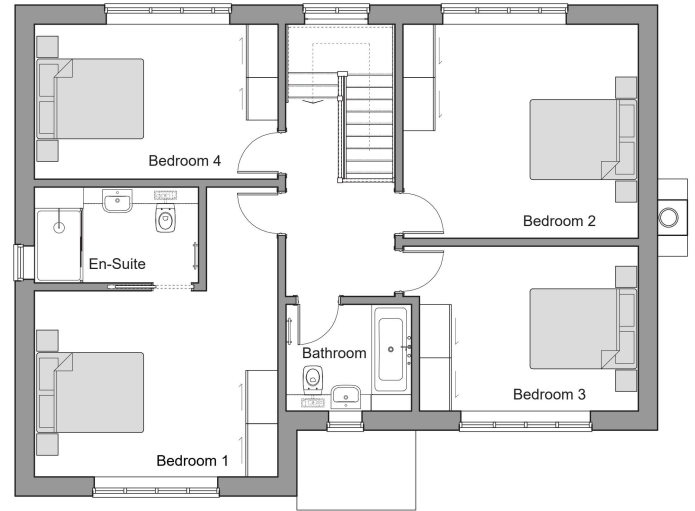
Computer generated imagery is included for guidance only. The properties may vary in terms of elevational design details, position, size and materials used.

5 Badgers Close

4 BEDROOM HOUSE - 176m² (1,890ft²)



Ground Floor Plan



First Floor Plan

Room	Metric	Imperial
Lounge	7262 x 4425mm	23' 10" x 14' 06"
Kitchen / Dining	8500 x 4578mm	27' 11" x 15' 00"
Bedroom 1	4563 x 3495mm	15' 00" x 11' 06"
Bedroom 2	4407 x 4019mm	14' 06" x 13' 02"
Bedroom 3	4101 x 3096mm	13' 05" x 10' 02"
Bedroom 4	4569 x 2909mm	15' 00" x 09' 07"

Dimensions are for guidance only and may vary.

The 2 storey property offers contemporary living/ dining with fitted kitchen and integrated appliances.

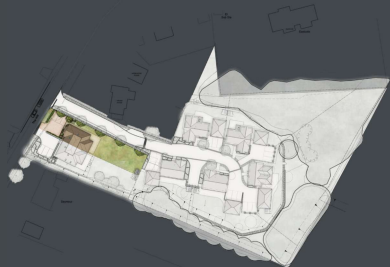
The ground floor comprises the living area and separate fitted kitchen / dining area with bi-fold doors to garden.

The upper floor comprises four bedrooms, one with en-suite and the family bathroom.



6 Badgers Close

4 BEDROOM HOUSE - 247m² (2,655ft²)



BEDROOMS 4

BATHROOMS 4

PARKING BAYS 3

Nestled in the heart of the picturesque village of Charing, this exceptional four-bedroom luxury family home forms part of an exclusive new development of just seven beautifully crafted residences.

Designed with modern living in mind, the property offers generous open-plan living spaces, high-spec finishes throughout, and a private landscaped garden—perfect for family life and entertaining.

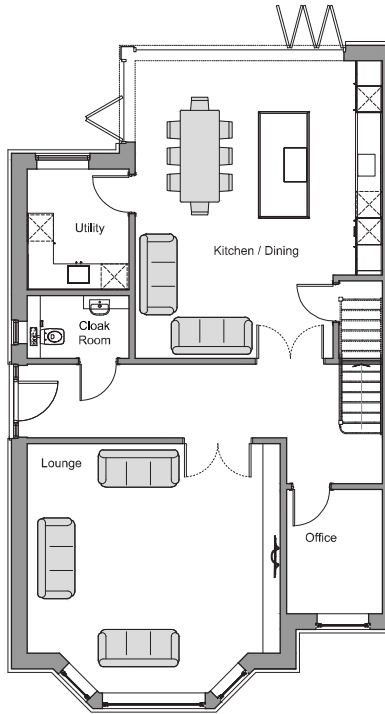
Set within a peaceful, semi-rural location yet conveniently close to local amenities, schools, and excellent transport links, this stunning new build blends countryside charm with contemporary comfort.



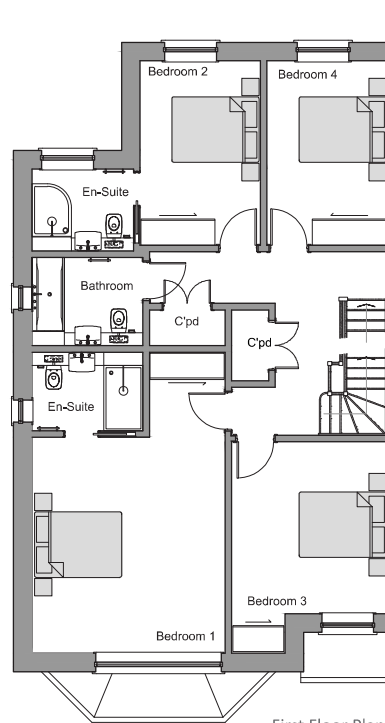
Computer generated imagery is included for guidance only. The properties may vary in terms of elevational design details, position, size and materials used.

6 Badgers Close

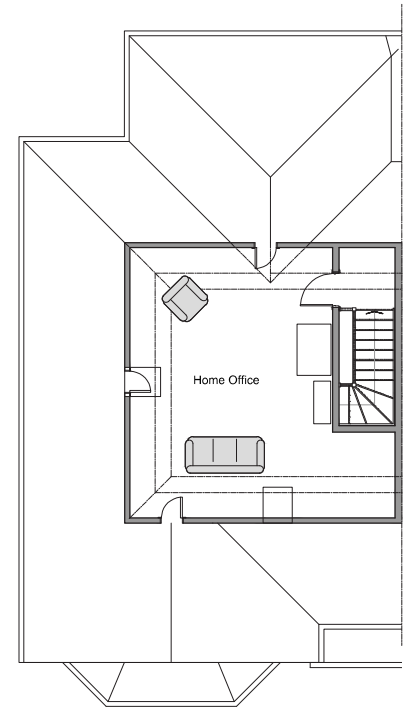
4 BEDROOM HOUSE - 247m² (2,655ft²)



Ground Floor Plan



First Floor Plan



Second Floor Plan

Room	Metric	Imperial
Lounge	5800x 4800mm	19' 00" x 15' 09"
Kitchen / Dining	6815 x 5660mm	22' 04" x 18' 07"
Office	2850 x 2190mm	09' 04" x 07' 02"
Bedroom 1	4918 x 4424mm	16' 02" x 14' 06"
Bedroom 2	4217 x 2756mm	13' 10" x 09' 00"
Bedroom 3	3942 x 3563mm	12' 11" x 11' 08"
Bedroom 4	4217 x 2756mm	13' 10" x 09' 00"
Home Office	6333 x 4755mm	20' 09" x 15' 07"

Dimensions are for guidance only and may vary.

The 2 storey property offers contemporary living/ dining with fitted kitchen and integrated appliances.

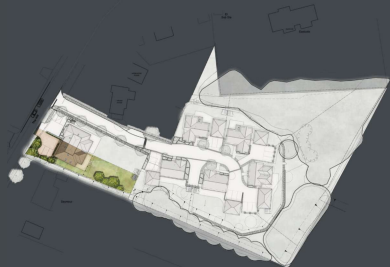
The ground floor comprises the living area, office and separate fitted kitchen / dining area with corner bi-fold door to garden.

The upper floor comprises four bedrooms, two with en-suites and the family bathroom.



7 Badgers Close

4 BEDROOM HOUSE - 232m² (2,493ft²)



BEDROOMS 4

BATHROOMS 4

PARKING BAYS 3

Nestled in the heart of the picturesque village of Charing, this exceptional four-bedroom luxury family home forms part of an exclusive new development of just seven beautifully crafted residences.

Designed with modern living in mind, the property offers generous open-plan living spaces, high-spec finishes throughout, and a private landscaped garden—perfect for family life and entertaining.

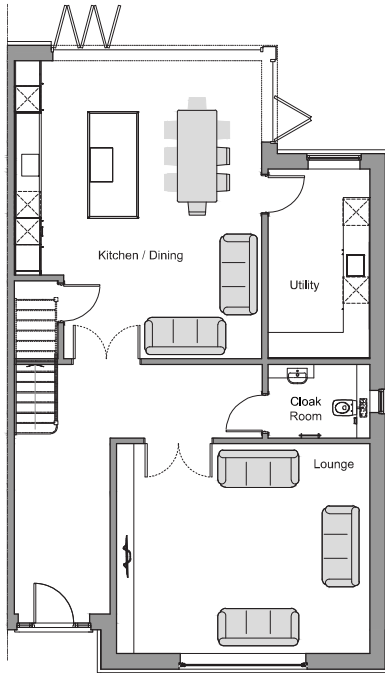
Set within a peaceful, semi-rural location yet conveniently close to local amenities, schools, and excellent transport links, this stunning new build blends countryside charm with contemporary comfort.



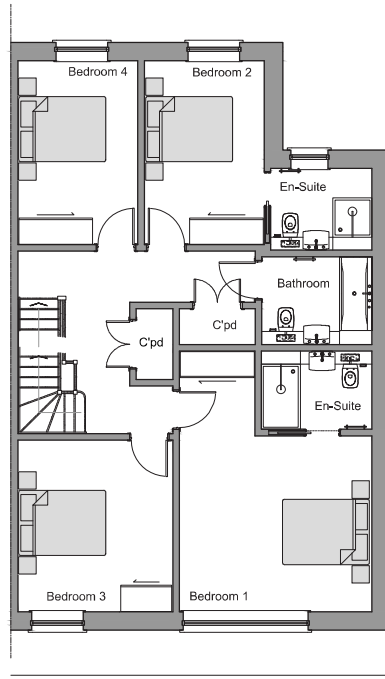
Computer generated imagery is included for guidance only. The properties may vary in terms of elevational design details, position, size and materials used.

7 Badgers Close

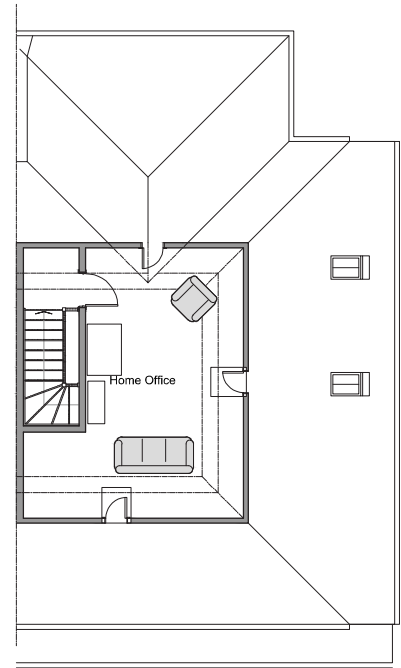
4 BEDROOM HOUSE - 232m² (2,493ft²)



Ground Floor Plan



First Floor Plan



Second Floor Plan

Room	Metric	Imperial
Lounge	5800x 4800mm	19' 00" x 15' 09"
Kitchen / Dining	6815 x 5660mm	22' 04" x 18' 07"
Bedroom 1	4424 x 4043mm	14' 06" x 13' 03"
Bedroom 2	4217 x 2756mm	13' 10" x 09' 00"
Bedroom 3	3942 x 3563mm	12' 11" x 11' 08"
Bedroom 4	4217 x 2756mm	13' 10" x 09' 00"
Home Office	6333 x 3700mm	20' 09" x 12' 02"

Dimensions are for guidance only and may vary.

The 2 storey property offers contemporary living/dining with fitted kitchen and integrated appliances.

The ground floor comprises the living area and separate fitted kitchen / dining area with corner bi-fold door to garden.

The upper floor comprises four bedrooms, two with en-suites and the family bathroom.

