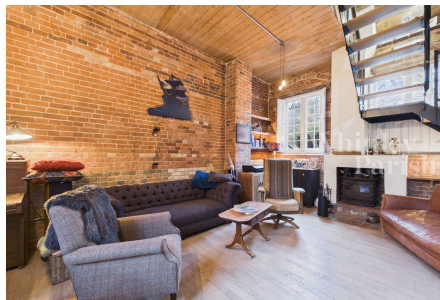


Kenninghall Road, Garboldisham, Diss, IP22 2SJ

Guide Price £375,000 - £400,000

2 1 1



Offering immense character and history this period Grade II listed house forms part of a collection of historic buildings set in private and secluded situation.

Key Features

- Guide Price £375,000 - £400,000
- Immense character & architecture & history
- 700 sq ft of outbuildings
- Immaculately presented
- Secluded & tucked away position
- No onward chain
- Sought after & well served village
- Freehold
- Council Tax Band - B
- EPC rating - F

