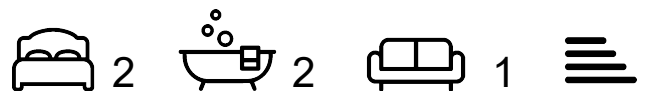




Sandy House, Sackett Road

Barking, IG11 0WN

Guide Price £275,000 - £310,000



- TWO BEDROOMS
- TERRACE
- BATHROOM
- GROUND FLOOR APARTMENT
- EN-SUITE TO BEDROOM ONE
- EASY REACH OF BARKING RIVERSIDE STATION
- EXCELLENT TRANSPORT LINKS
- UBER BOAT SERVICE ALONG THE RIVER THAMES

Sandy House, Sackett Road

Barking, IG11 0WN

Guide Price £275,000 - £310,000



Guide Price: £275,000 - £300,000

Welcome to this charming flat located on Sackett Road in Barking, a vibrant area known for its community spirit and convenient amenities. This delightful property features two well-proportioned bedrooms, making it an ideal choice for couples, small families, or individuals seeking extra space.

As you enter the flat, you are greeted by a spacious reception room that offers a warm and inviting atmosphere, perfect for relaxation or entertaining guests. The natural light that floods this area enhances the overall appeal, creating a bright and airy environment.

The flat boasts two modern bathrooms, providing ample facilities for residents and guests alike. This thoughtful layout ensures privacy and convenience, catering to the needs of a busy lifestyle.

Situated in a desirable location, this property benefits from excellent transport links, making it easy to commute to central London and beyond. Local shops, parks, and schools are also within close proximity, adding to the overall convenience of living in this area.

In summary, this flat on Sackett Road presents a wonderful opportunity for those looking for a comfortable and stylish home in Barking. With its appealing features and prime location, it is sure to attract interest from a variety of potential buyers or renters. Do not miss the chance to make this lovely flat your new home.

OPEN PLAN LIVING/KITCHEN/DINING AREA

20'7" x 15'8" narr to 13'1" (6.27m x 4.78m narr to 3.99m)

Laminated flooring, range of wall and base units, roll top work surface, sink and drainer, integrated cooker, wall mounted oven, wall mounted radiator, double glazed window, double doors leading onto terrace.

BEDROOM ONE

12'4" x 11'2" (3.76m x 3.40m)

Double glazed window, wall mounted radiator, carpet flooring.

EN-SUITE

6'8" x 5'1" (2.03m x 1.55m)

Shower cubicle, low level w.c, wash basin.

BEDROOM TWO

14' x 9'5" (4.27m x 2.87m)

Double glazed window, wall mounted radiator, carpet flooring.

BATHROOM

7'3" x 6' (2.21m x 1.83m)

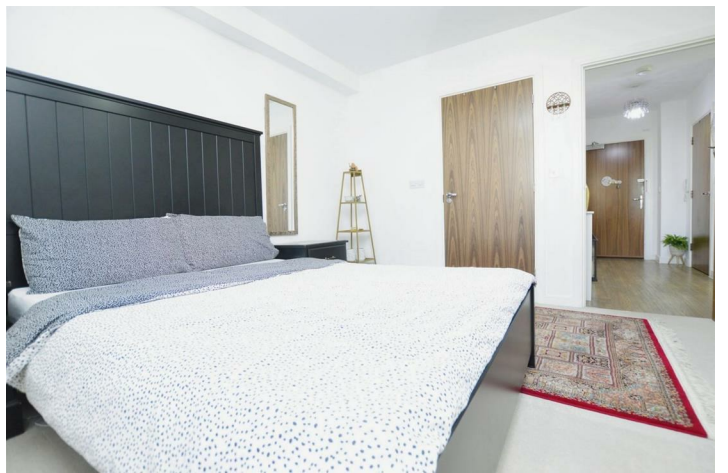
Panelled bath, low level w.c, wash basin.

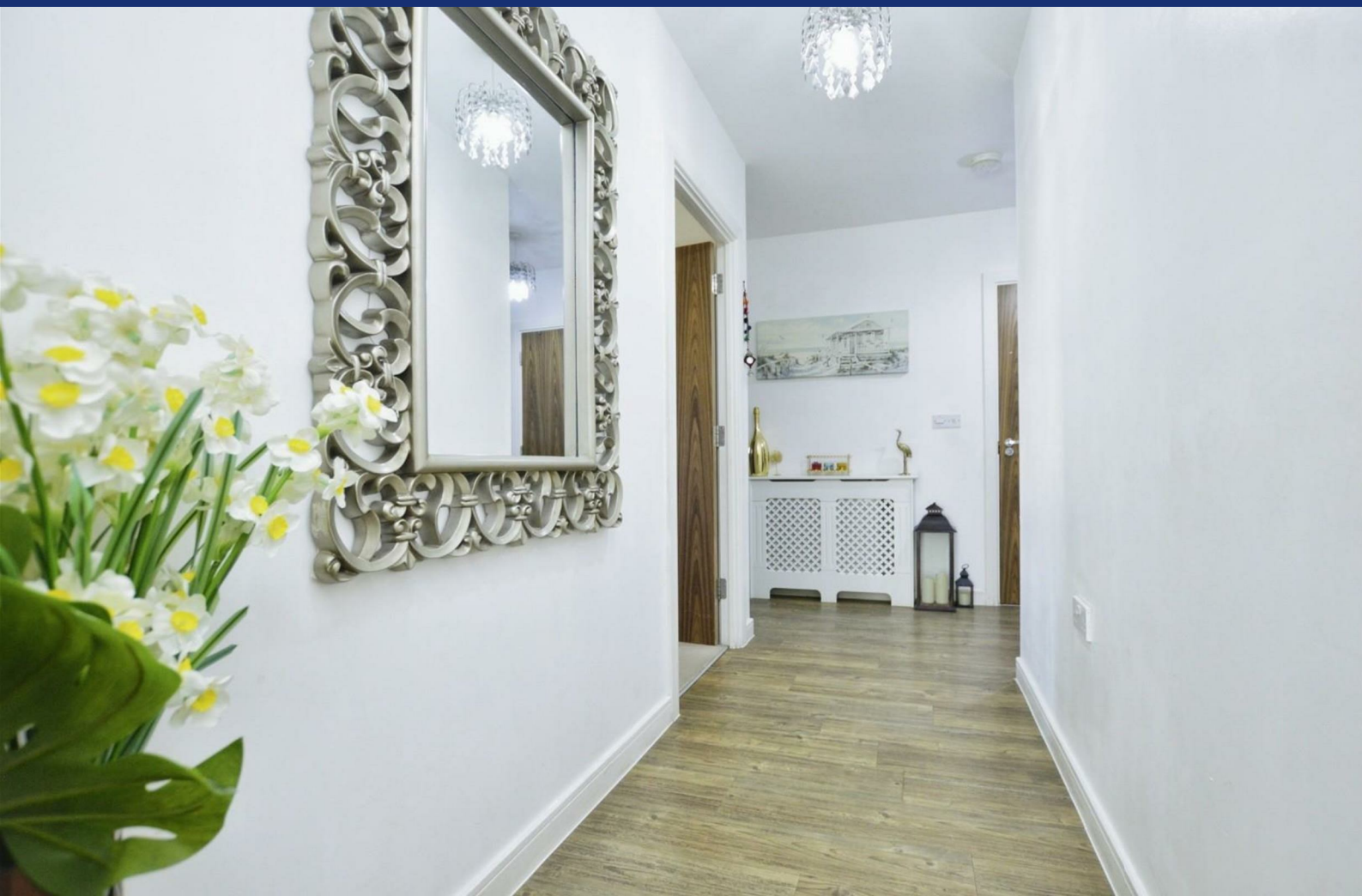
STORAGE CUPBOARD

6'8" x 4'11" (2.03m x 1.50m)

Floorplan







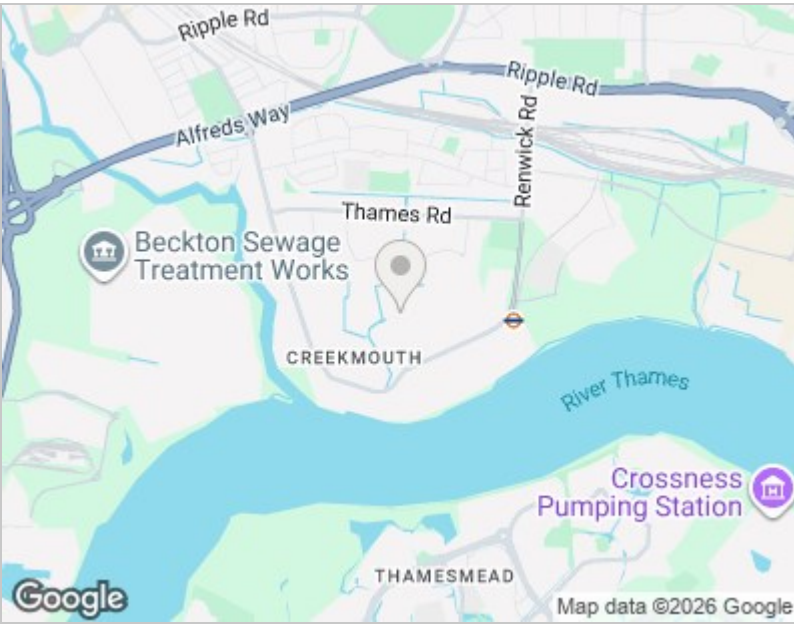
Energy Efficiency Graph



Viewing

Please contact our Hunters Plaistow Office on 0207 474 2345 if you wish to arrange a viewing appointment for this property or require further information.

Road Map



Hybrid Map





These particulars are intended to give a fair and reliable description of the property but no responsibility for any inaccuracy or error can be accepted and do not constitute an offer or contract. We have not tested any services or appliances (including central heating if fitted) referred to in these particulars and the purchasers are advised to satisfy themselves as to the working order and condition. If a property is unoccupied at any time there may be reconnection charges for any switched off/disconnected or drained services or appliances - All measurements are approximate. THINKING OF SELLING? If you are thinking of selling your home or just curious to discover the value of your property, Hunters would be pleased to provide free, no obligation sales and marketing advice. Even if your home is outside the area covered by our local offices we can arrange a Market Appraisal through our national network of Hunters estate agents.

272 Barking Road, Plaistow, E13 8HR
Tel: 0207 474 2345 Email: plaistow@hunters.com
<https://www.hunters.com>

