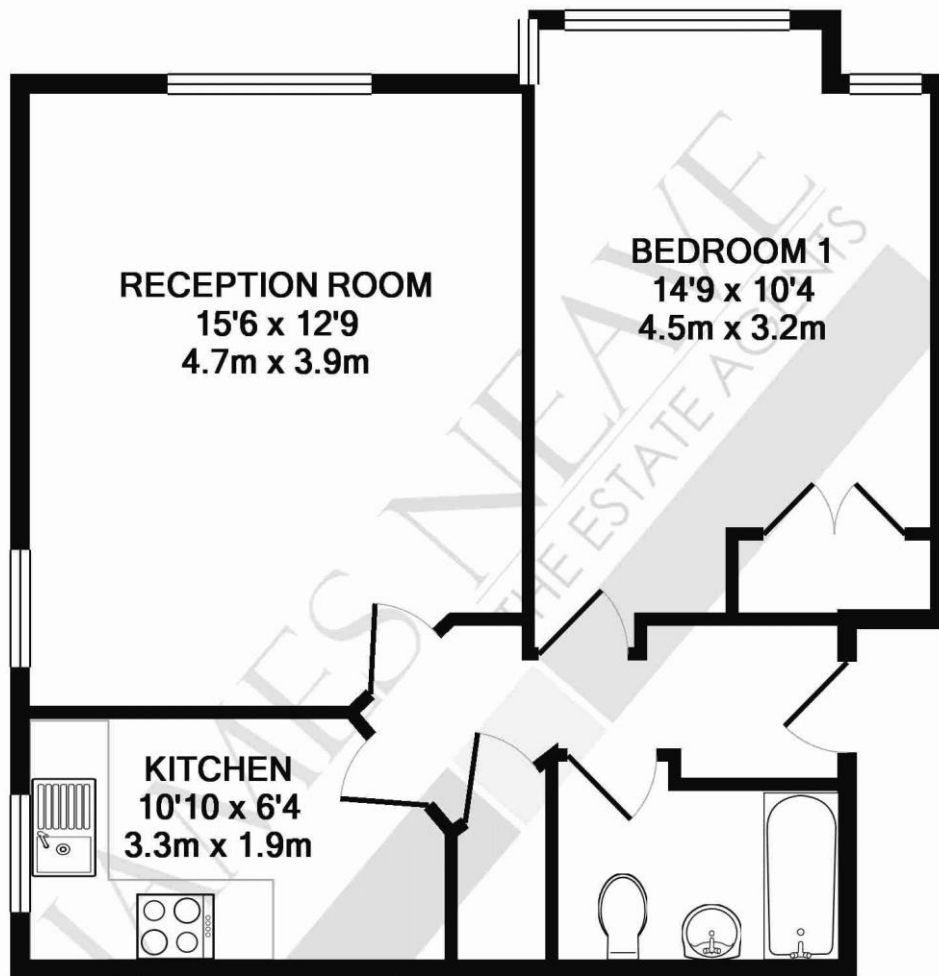




25 Roydon Court, Mayfield Road, Walton-on-Thames, Surrey, KT12 5HZ

Monthly Rental Of £1,350





TOTAL APPROX. FLOOR AREA 496 SQ.FT. (46.1 SQ.M.)

Whilst every attempt has been made to ensure the accuracy of the floor plan contained here, measurements of doors, windows, rooms and any other items are approximate and no responsibility is taken for any error, omission, or mis-statement. This plan is for illustrative purposes only and should be used as such by any prospective purchaser. The services, systems and appliances shown have not been tested and no guarantee as to their operability or efficiency can be given

Made with Metropix ©2013

Situated within the exclusive Roydon Court development, this bright and airy top floor one-bedroom flat offers well-presented accommodation in a well-maintained development, just moments from Walton mainline station, providing fast direct services to London Waterloo.

The property features a dual-aspect living room with wood flooring, a separate modern kitchen, and a double bedroom with a bay window and fitted wardrobes. A white bathroom suite with shower over bath and a useful storage cupboard complete the accommodation.

Further benefits include an allocated parking space, secure entry system. Offered unfurnished and available now. EPC Rating C.



AGENTS NOTES: These details do not constitute any part of an offer or contract. In issuing them we do not have any authority to give any warranty or representation whatsoever in respect of this property. These details are provided without any responsibility on our part or the part of the vendors. No statements in these details are to be relied upon as representations of fact and purchasers should satisfy themselves by inspection or otherwise as to the accuracy of the statements contained therein.

Equipment: We have not tested the equipment or central heating system mentioned in these particulars and purchasers are advised to satisfy themselves as to their working order and condition.

Measurements: Great care is taken when measuring but measurements should not be relied upon for ordering carpets, equipment, etc.