



## Ashford Road

Ashford, TW15 1PA

**£1,600 Per month**



Well-presented two-bedroom, two-bathroom ground floor flat offering a private terrace, garden access and allocated parking in a peaceful gated setting.



Introducing a spacious and beautifully presented two-bedroom, two-bathroom ground floor apartment set within a sought-after modern gated development. Offering a superb blend of comfort, convenience and contemporary living, this apartment is ideal for professionals, small families or downsizers seeking a peaceful, well-kept setting with excellent transport links.

The property welcomes you with a bright and well-proportioned entrance hall leading to a generous living and dining area, complete with patio doors opening directly onto a private terrace—perfect for relaxing or entertaining. The terrace flows seamlessly into the beautifully maintained communal gardens, offering a rare indoor–outdoor lifestyle.

A modern fully fitted kitchen provides ample storage and worktop space. Both bedrooms are comfortable doubles, with the principal bedroom benefiting from a stylish ensuite shower room, while a sleek family bathroom serves the second bedroom and guests.

Further highlights include:

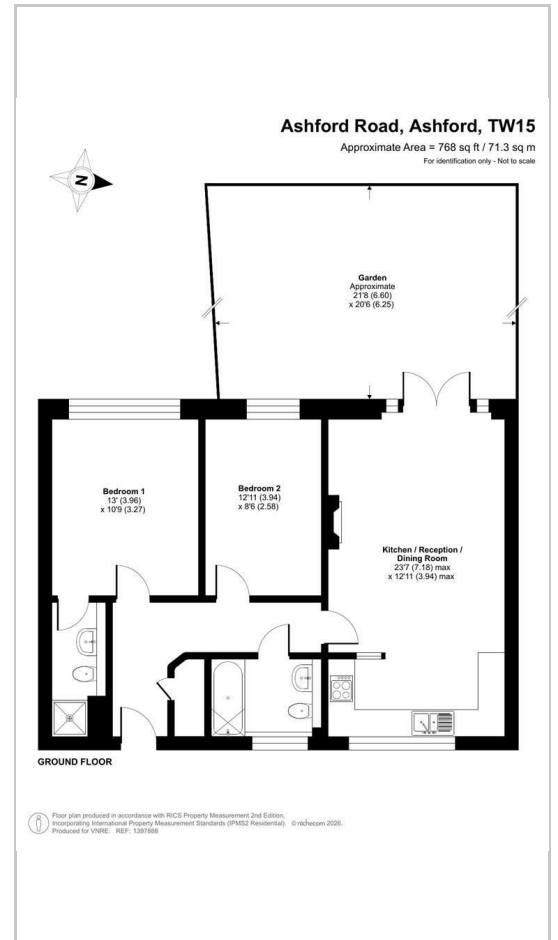
- Secure gated development
- Allocated parking
- Well-kept communal grounds
- Gas central heating / double glazing (add/remove as appropriate)
- Close to transport links, local shops, schools, and amenities

Properties in this popular development are rarely available and early viewings are strongly recommended.

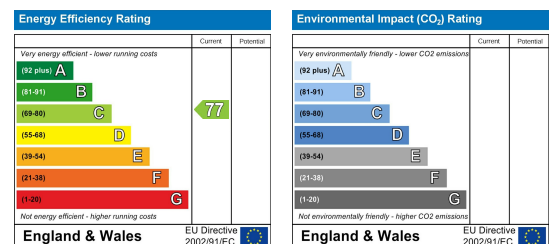
## Area Map



## Floor Plans



## Energy Efficiency Graph



These particulars, whilst believed to be accurate are set out as a general outline only for guidance and do not constitute any part of an offer or contract. Intending purchasers should not rely on them as statements of representation of fact, but must satisfy themselves by inspection or otherwise as to their accuracy. No person in this firm's employment has the authority to make or give any representation or warranty in respect of the property.