



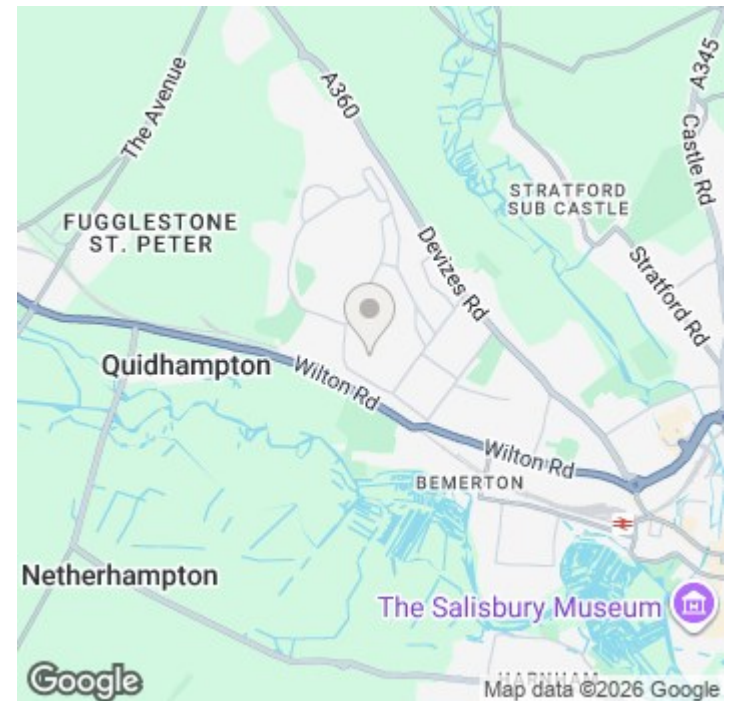
15 Carnival House, Jubilee Close, Salisbury, Wiltshire, SP2 9ER

£1,000 PCM

About The Property

A spacious second floor two bedroom apartment benefiting from a balcony and parking for one car.

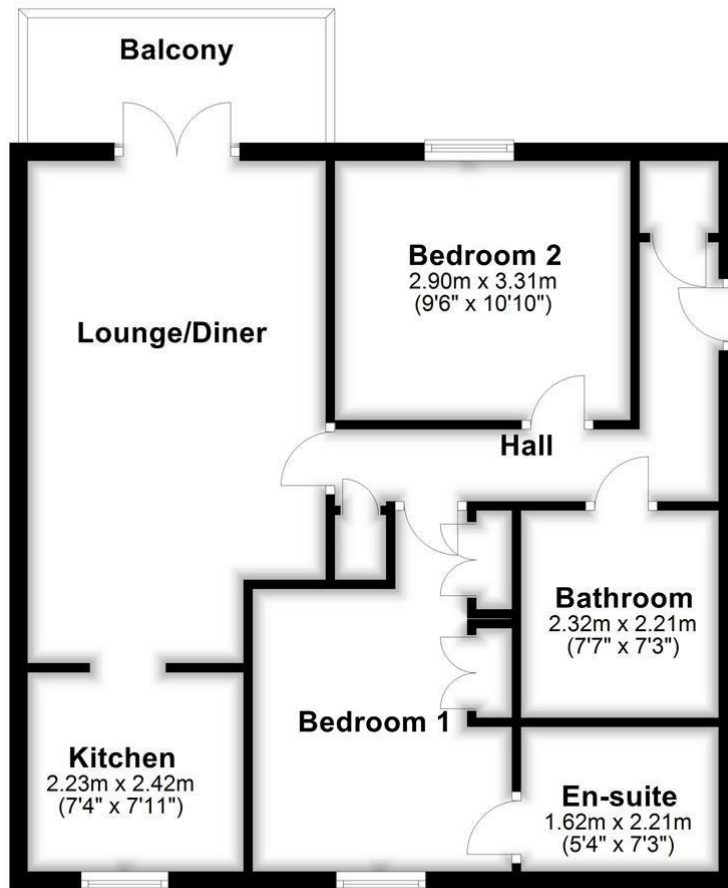
- Two double bedrooms
- En suite shower room
- Bathroom
- Fitted kitchen
- Lounge/dining room
- Balcony
- Allocated parking space
- Light and spacious





First Floor

Approx. 61.4 sq. metres (660.7 sq. feet)



Total area: approx. 61.4 sq. metres (660.7 sq. feet)

Further Information

Let available date: 25th March 2026
 NB: This date is provisional and will only be confirmed once referencing has been successfully completed.

Property type: Flat

Furnish type: Unfurnished

Deposit: £1,150

Local authority: Wiltshire

Council Tax: Band B

EPC: D(62)

Energy Efficiency Rating

	Current	Potential
Very energy efficient - lower running costs		
(92 plus) A		
(81-91) B		
(69-80) C		79
(55-68) D	62	
(39-54) E		
(21-38) F		
(1-20) G		
Not energy efficient - higher running costs		
England & Wales	EU Directive 2002/91/EC	