

# Moorcroft Park, Harlington Road

Hillingdon • Middlesex • UB8 3HD  
Offers In Excess Of: £375,000



coopers  
est 1986

# Moorcroft Park, Harlington

Hillingdon • Middlesex • UB8 3HD

A two bedroom apartment situated on Moorcroft Park, a quiet and peaceful gated development set within 3 acres of secluded communal grounds and yet is a short distance from local shops, schools and bus/road links and the M4 motorway. Close by are Stockley Park, Heathrow Airport, Brunel University and Uxbridge Town Centre with its multitude of shops, restaurants, bars and tube station. The property comprises 22ft kitchen/living area, 14ft main bedroom with en-suite shower room, 11ft second bedroom, utility room and family bathroom. Outside there are large communal grounds and allocated parking.

Two bedroom apartment

Two bathrooms

Gated development

Large communal grounds

Great transport links

22ft kitchen/living area

14ft main bedroom with en-suite

11ft second bedroom

Utility room

Allocated parking

These particulars are intended as a guide and must not be relied upon as statements of fact. Your attention is drawn to the Important Notice on the last page.





### Property

Placed on a quiet gated development on Moorcroft Park, this two bedroom apartment offers well proportioned room sizes and is in immaculate condition throughout. The property comprises 22ft kitchen/living area, 14ft main bedroom with en-suite shower room, 11ft second bedroom, utility room and family bathroom.

### Outside

Three acres of landscaped gardens surround the property also comes with the added advantage of one allocated parking space plus visitor parking.

### Location

Moorcroft Park is a quiet and peaceful gated development set within 3 acres of secluded communal grounds and yet is a short distance from local shops, schools and bus/road links and the M4 motorway. Close by are Stockley Park, Heathrow Airport, Brunel University and Uxbridge Town Centre with its multitude of shops, restaurants, bars and tube station.





### Schools:

Hewens Primary School 0.4 miles away  
Hillingdon Primary School 0.5 miles away  
Bishopshalt Senior School 0.8 miles away



### Train:

West Drayton Station 1.5 miles away  
Hayes & Harlington Station 1.9 miles away  
Uxbridge station 2.0 miles away



### Car:

M4, A40, M25, M40



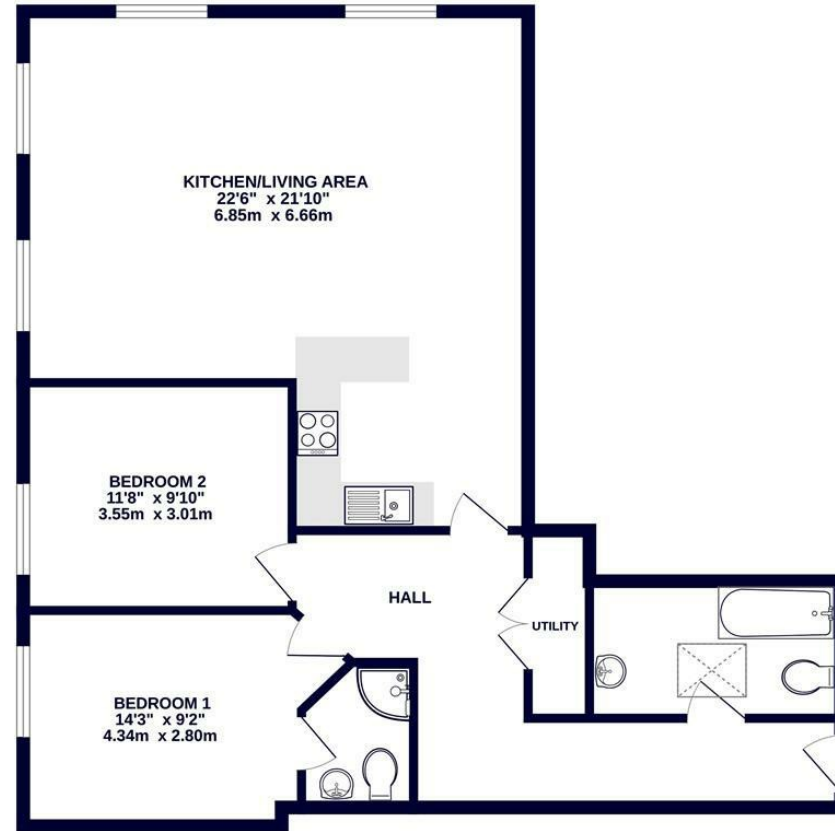
### Council Tax Band:

D

(Distances are straight line measurements from centre of postcode)



### GROUND FLOOR 901 sq.ft. (83.7 sq.m.) approx.



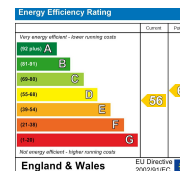
TOTAL FLOOR AREA: 901 sq.ft. (83.7 sq.m.) approx.

Whilst every attempt has been made to ensure the accuracy of the floorplans contained here, measurements of doors, windows, rooms and any other items are approximate and no responsibility is taken for any error, omission or mis-statement. This plan is for illustrative purposes only and should be used as such by any prospective purchaser. The services, systems and appliances shown have not been tested and no guarantee as to their operability or efficiency can be given.  
Made with Metropix ©2025



01895 230 103  
109 Hillingdon Hill, Hillingdon Village,  
Middlesex, UB10 0JQ  
hillingdon@coopersresidential.co.uk

CoopersResidential.co.uk



Important Notice: These particulars, whilst believed to be accurate are set out as a general outline only for guidance and do not constitute any part of an offer or contract. Intending purchasers should not rely on them as statements or representation of fact, but must satisfy themselves by inspection or otherwise has the authority to make or give any representation or warranty in respect of the property.