



Canrobert Street, E2

£1,100,000

A three story Victorian terraced house that has been transformed into a light and spacious family home with four double bedrooms, two bathrooms, open plan living space and a private courtyard.

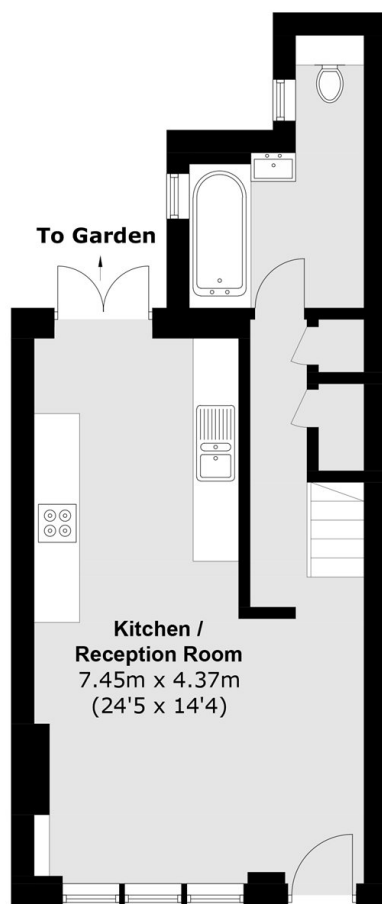
On the ground floor there is an open plan living and dining area with two large sash windows and stylish galley kitchen which comes with double doors leading out onto the courtyard garden.

Bethnal Green is one of the more established East London neighbourhoods and Winkley Street is at its heart. Located between Bethnal Green Underground Station (Central line) and Cambridge Heath Overground Station with bus links to Hackney and Central London.

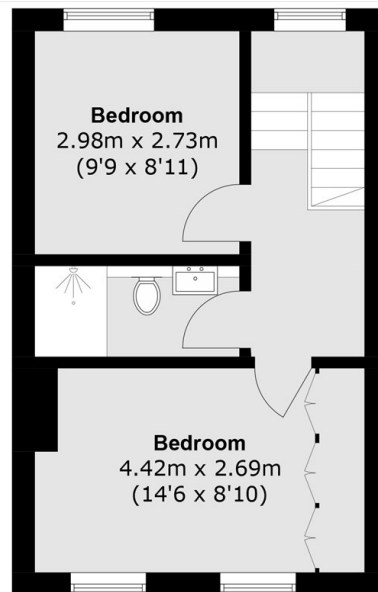
Features

- Four Double Bedrooms
- Two Bathrooms
- Freehold
- Open Plan Living
- Original Features
- Sought After Location

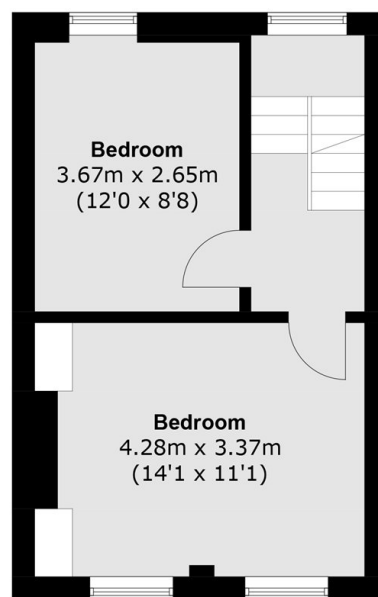
Canrobert Street, London, E2



Ground Floor



Second Floor



First Floor

Total area (approx.): 100.8 sq. m (1,085 sq. ft)