



51 Church Street, St. Albans, AL3 5NG

Guide price £835,000 Freehold



51 Church Street

St. Albans, AL3 5NG

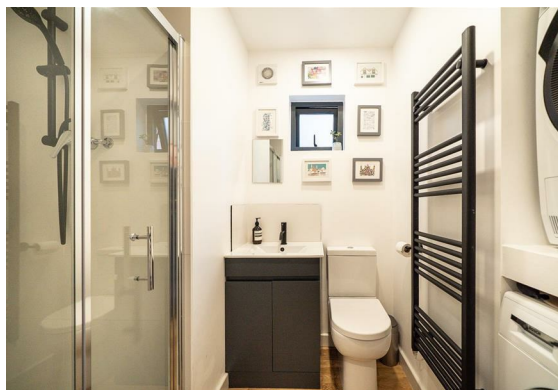
A beautifully presented Victorian house located in a wonderfully central location with an air source heat pump and the superb benefit of a 150ft garden and a self-contained annex offering flexible use as an office, home gym, treatment room or for extended family/guests.

The accommodation begins with the front door opening into the bright open-plan 22ft lounge area with a feature fireplace with storage and shelves to the side, a Sash window to the front and plantation shutters, exposed wooden floor boards and stairs to the first floor. The extended kitchen/diner is flooded with light from a part vaulted ceiling with Velux roof windows, a Sash window to the rear and a glazed door to the rear garden and a stylish fitted kitchen.

The first floor landing has stairs to the second floor and doors to rooms including the master bedroom with a Sash window with Plantation shutters to the front, a feature fireplace, built-in wardrobes and access to an en-suite shower room. There's a third bedroom with built-in storage and a stylish family bathroom suite with roll-top bath. The second floor landing opens into the second bedroom with a Velux window to the rear a range of fitted wardrobes and access to excellent eaves storage to the front and rear.

Externally there's attractive railings and gate with a paved area behind at the front. The wonderful rear garden extends 150ft with a paved patio and a pathway with well-stocked flower bed borders leading to a Pergola and further patio ideal for entertaining. There's an all-weather artificial lawn leading to the impressive detached annex. The superb outbuilding benefits from a lounge/office, shower room and bedroom with wardrobe. A door leads out to two useful sheds.

Church Street is located within the Garden Fields Conservation area just a moments' walk of St Albans City Centre and the main line train station is within 15 minutes walk. There are also a number of local parks and highly sought after schools close by.





ACCOMMODATION

Lounge

22'5 x 11'10 (6.83m x 3.61m)

Kitchen/Dining Room

11'2 x 8'2 (3.40m x 2.49m)

FIRST FLOOR

Landing

Bedroom 1

11'10 x 11'0 (3.61m x 3.35m)

En-Suite

Bedroom 3

9'3 x 6'5 (2.82m x 1.96m)

Bathroom

SECOND FLOOR

Bedroom 2

12'10 x 7'5 (3.91m x 2.26m)

ANNEXE

Lounge/Office

11'10 x 9'2 (3.61m x 2.79m)

Bedroom 4

9'1 x 9'0 (2.77m x 2.74m)

Shower Room/W.C.

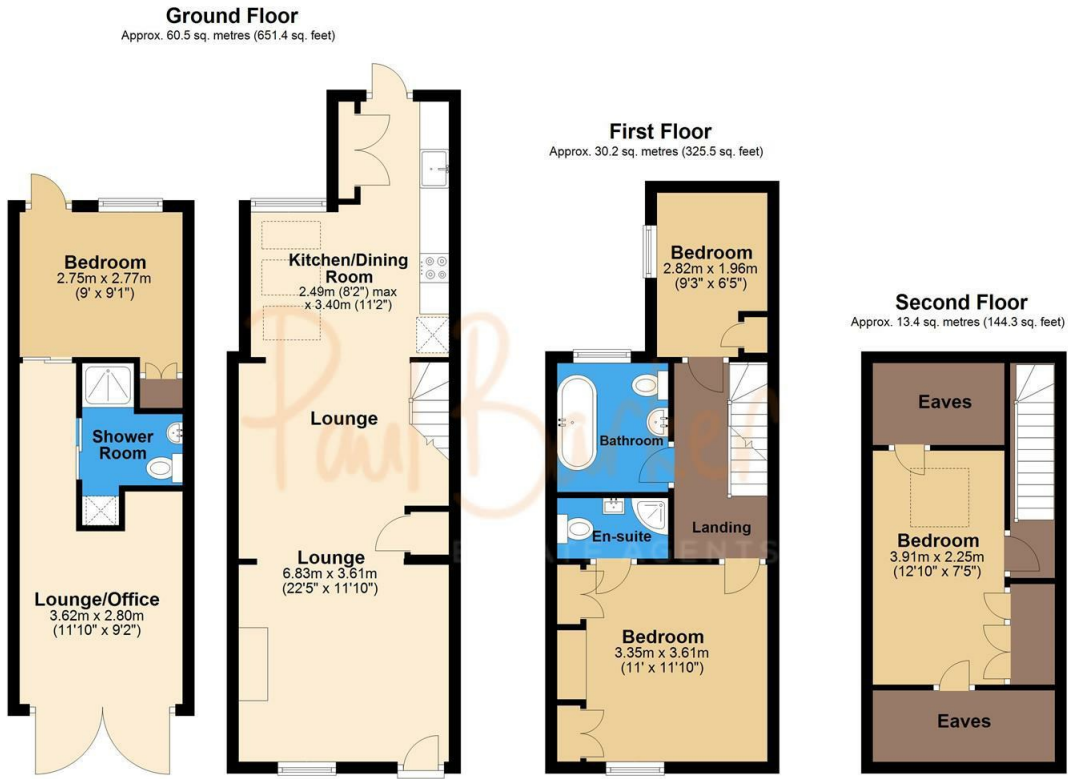
OUTSIDE

Frontage

Rear Garden

150 (45.72m)

Floor Plan



Total area: approx. 104.2 sq. metres (1121.1 sq. feet)
Disclaimer - Floor plan is for marketing purposes only and is to be used as a guide - SKM Studio Plan produced using PlanUp.

Viewing

Please contact our Office on 01727 223344 if you wish to arrange a viewing appointment for this property or require further information.

These particulars, whilst believed to be accurate are set out as a general outline only for guidance and do not constitute any part of an offer or contract. Intending purchasers should not rely on them as statements of representation of fact, but must satisfy themselves by inspection or otherwise as to their accuracy. No person in this firm's employment has the authority to make or give any representation or warranty in respect of the property.

Area Map



Energy Efficiency Graph

