



the
ANDERSON
Group exp

Emlyn Cottage, Victoria Road, Penclawdd, Gower, Swansea, SA4 3FX

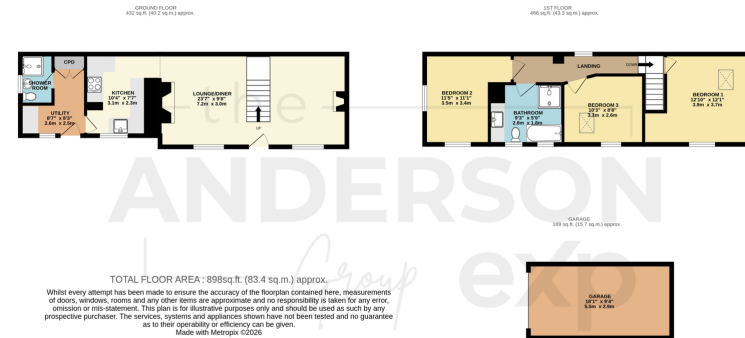
Offers Over £425,000

🛏 3 🚿 2 🚗 1

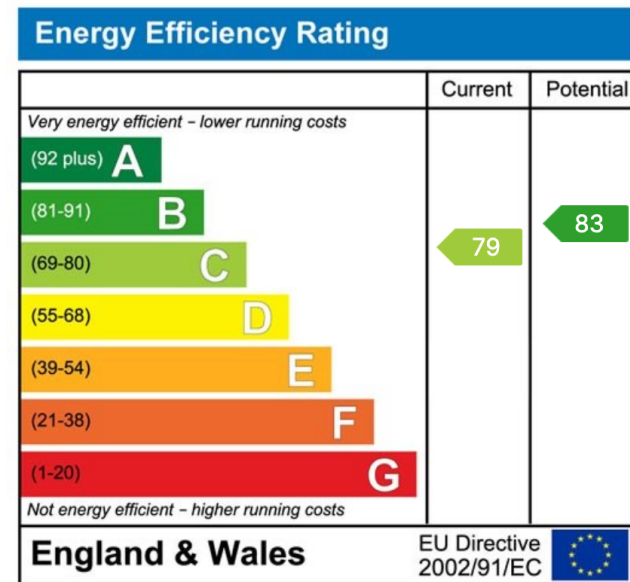


- Beautifully Presented Three Bedroom Detached Cottage
- Generous 0.3 Acre Plot with Multiple Landscaped Terraces
- Wood Burning Stove & Period Features Throughout
- Solar Panels, EV Charger, 20kW Battery Storage & ASHP
- Excellent Community with Local Amenities
- Elevated Edge-of-Village Position with Stunning Estuary Views
- Family Bathroom & Ground Floor Shower Room
- Convenient Access to Swansea & Gower Peninsula
- Detached Garage & Driveway Parking
- Please Quote JH001 when Enquiring





Unique and beautifully presented is this period three bedroom cottage situated in an elevated edge-of-village position in the popular coastal village of Penclawdd on the Gower Peninsula, renowned for its strong community spirit and far-reaching panoramic views across the Loughor Estuary to Llanelli beyond. Briefly comprising shower room, utility, kitchen, lounge/diner on the ground floor, and three bedrooms and bathroom on the first floor. Benefitting from beautifully landscaped gardens extending to approximately 0.3 acres with fruit trees, mature shrubs and wildflower areas, detached garage and driveway. Further benefitting from an impressive renewable energy package including solar array, air source heat pump, 20kW battery storage and EV charger. Freehold. Viewing highly recommended.



01792 805075

Swansea, Mumbles & Cower

sales@melanieanderson.co.uk