



Harrow Road

London, W9

Asking Price £600,000

Positioned on the upper two floors of a Victorian building and spanning approximately 976 square feet is this beautiful finished and wonderfully bright three-bedroom apartment.

With the most spectacular views of Hampstead and beyond, the accommodation comprises a large open plan kitchen and reception, master bedroom with abundant natural light and plentiful storage, two further double bedrooms and two good sized modern bathrooms.

Sandwiched between Little Venice, Maida Vale and Notting Hill, the property is a short walk to the heart of each of these desirable areas. Transport links include Royal Oak & Maida Vale tube Station (Bakerloo, Circle and Hammersmith and City lines).

CHESTERTONS



Harrow Road

London, W9

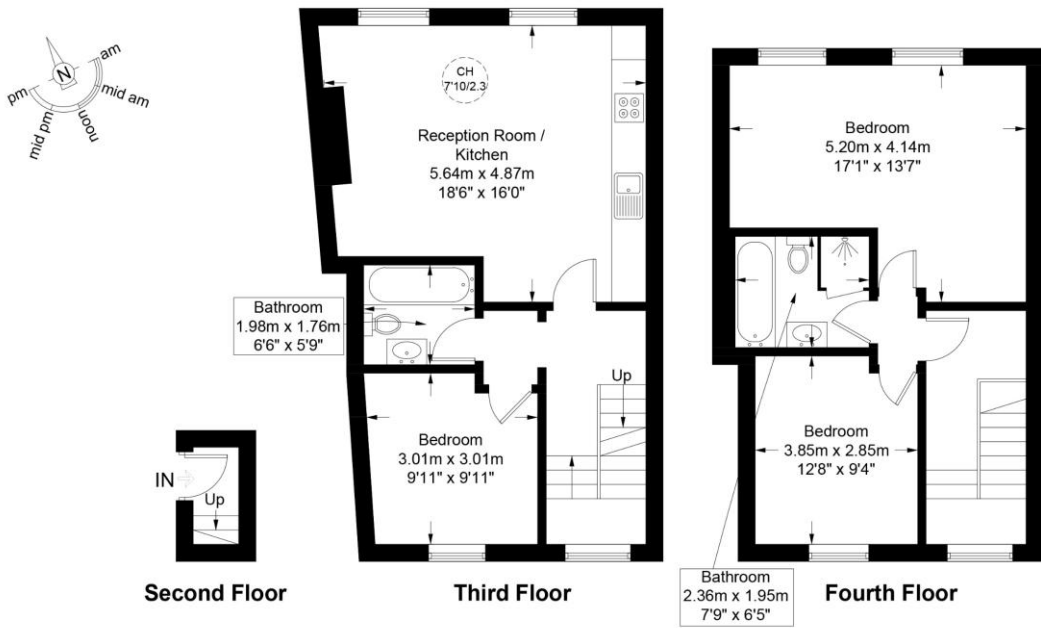
- 3 bedroom, 2 Bathroom duplex apartment.
- Finished to a most spectacular standard.
- Wonderfully positioned to access Little Venice, Queens Park and Notting Hill.
- Benefitting from a long lease.



Tenure: Leasehold 114 years 7 months
Service Charge: £4,769.02 Including building insurance.
Ground Rent: £350 pa
Local Authority: City Of Westminster
Council Tax Band: E

Chestertons Little Venice Sales

26 Clifton Road
Maida Vale
London
W9 1SX
littlevenice@chestertons.co.uk
020 7286 4632
chestertons.co.uk



This plan is for layout guidance only and is not drawn to scale unless stated. All dimensions, including windows, doors, and the Total Gross Internal Area (GIA), are approximate. For precise measurements, please consult a qualified architect or surveyor before making any decisions based on this plan.

