

Chequetts Close, Callington, PL17

Guide Price £375,000

3 1 1

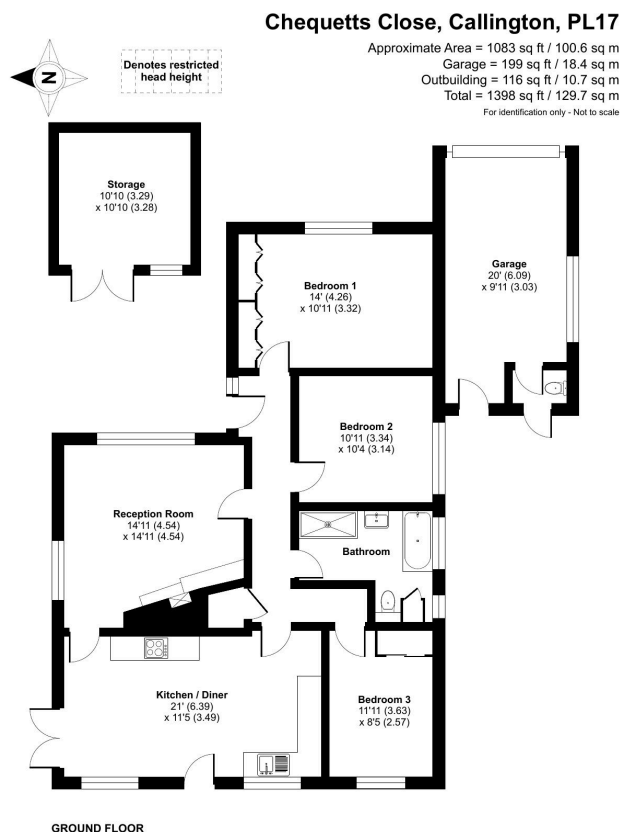


A well-presented three-bedroom detached bungalow, located in a highly sought-after residential area of Callington. Set on a generous plot, this spacious home benefits from a large private driveway, garage, and no onward chain.

Callington is a charming Cornish town located within a prime location in South East Cornwall and just 15 miles from Plymouth City Centre. The Town benefits from a range of facilities including a health centre, sports centre/gym, supermarkets, church and both primary and secondary schools. The area provides some idyllic countryside walks with Cotehele estate and house, Kit Hill and the Tamar Valley all nearby making it an ideal place for families and individuals alike.

Key Features

- TO ARRANGE A VIEWING PLEASE QUOTE BL0650
- Three Bedrooms
- Sought-After Location
- Open-Plan Kitchen/Dining Room
- Generous-Sized Plot
- Detached Bungalow
- No Onward Chain
- Large Private Driveway & Garage
- Well-Presented Throughout
- Freehold



ⓘ Floor plan produced in accordance with RICS Property Measurement Standards incorporating International Property Measurement Standards (IPMS2 Residential). © nichecom 2026. Produced for eXp Agent (D). REF: 1432636