



# WETHERELL

MAYFAIR'S FINEST PROPERTIES



## Piccadilly, W1J

£1,385 Per week

In the heart of Mayfair is this light, spacious recently renovated contemporary two-bedroom apartment, situated on the third floor (with a lift) of a discreet portered building overlooking Green Park.

Presented in immaculate condition having been recently renovated and interior designed throughout. The property is quietly situated on the fourth floor with a lift and benefits from large windows which offer excellent light throughout.

The property features an entrance hall, guest cloakroom and well-equipped kitchen with all the necessary appliances. The dining room provides a perfect space for entertaining while the comfortable living room is ideal for relaxation.

The two double bedrooms are generously sized and offer ample storage space.

Amenities include a day porter, and secure entry phone system.

Piccadilly is an excellent location, it is on the doorstep to the shops and amenities of Mayfair and the West End.



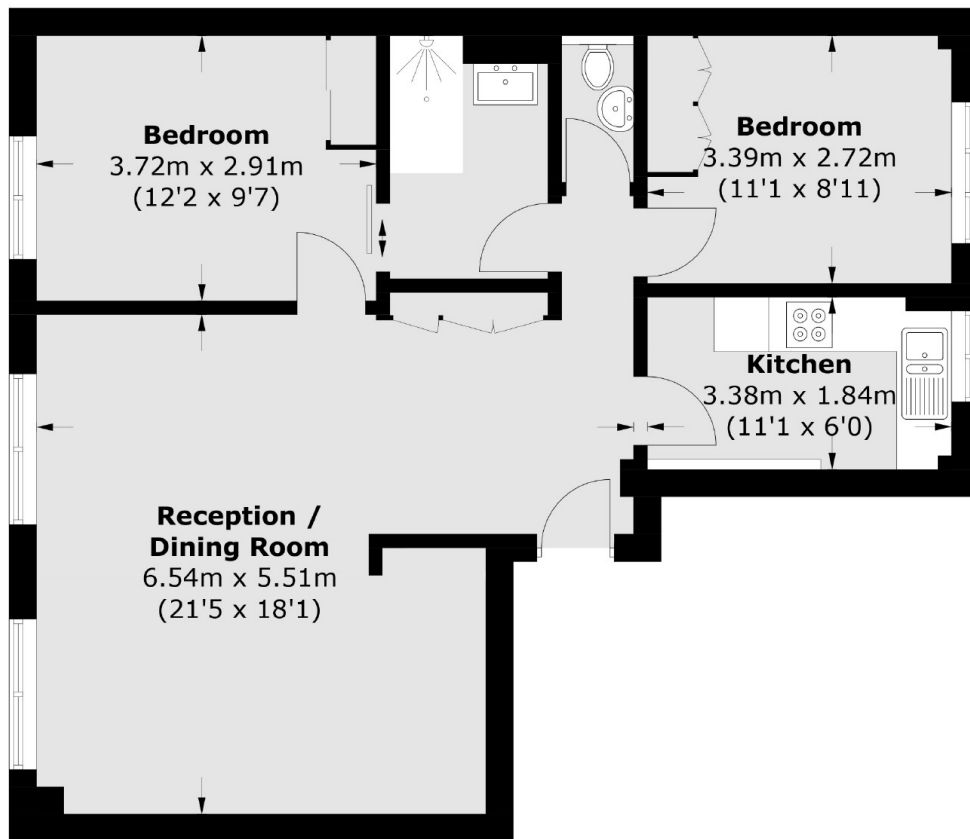
### FEATURES

- Two Spacious Double Bedrooms • Secure Day Porterage • Third Floor (Lift Access) • Modern Fixtures, Fittings and Furnishings • Wooden Flooring • Secure Parking Under Separate Negotiation •





Piccadilly,  
London, W1J



### Third Floor

Total area (approx.): 67.5 sq. m (726.6 sq. ft)



**WETHERELL**  
MAYFAIR'S FINEST PROPERTIES

102 Mount Street,  
London, W1K 2TH

T: 020 7529 5588  
E: [rentals@wetherell.co.uk](mailto:rentals@wetherell.co.uk)

We aim to make our particulars both accurate and reliable. However they are not guaranteed; nor do they form part of an offer or contract. If you require clarification on any points then please contact us, especially if you're traveling some distance to view. Please note that appliances and heating systems have not been tested and therefore no warranties can be given as to their working order.



Regulated  
Estate Agent  
and Letting Agent

[wetherell.co.uk](http://wetherell.co.uk)