



**Pelham Street, SW7**

**£4,000,000**

**Dexters**



## Pelham Street, SW7

This outstanding five-bedroom, three-bathroom residence offers refined living in the heart of South Kensington, just moments from the Natural History Museum, Harrods, and Sloane Square. Extending over approximately 2,300 sq ft, the home is thoughtfully arranged across multiple floors and presents an exciting opportunity to modernise into your forever family home.

The generous reception and dining areas provide flexible and elegant entertaining space, while the kitchen opens onto a private south-facing patio garden, perfect for indoor-outdoor living. The principal bedroom features a private en-suite bathroom and access to a south-facing balcony. With well-proportioned rooms and stylish interiors throughout, this home combines comfort, charm, and exceptional potential.

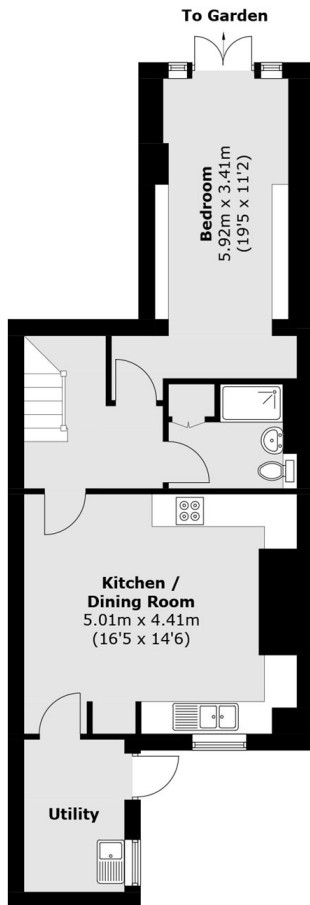
Pelham Street is a great spot for all your modern chic restaurants and delicatessens. The house's nearest station is South Kensington providing easy access to all areas of London.

### Features

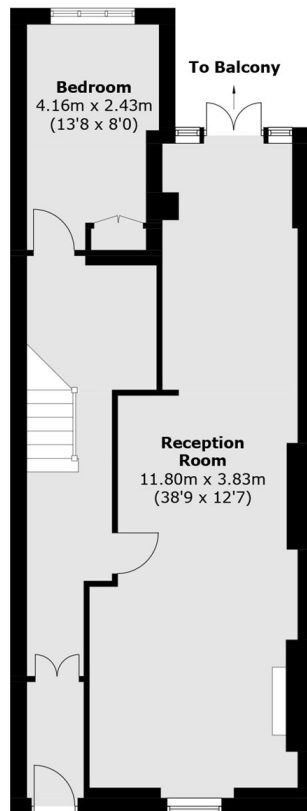
- Five Bedroom Home
- Highly Sought After Location
- No Ongoing Chain
- Walking Distance Of Tube Station
- Large Garden



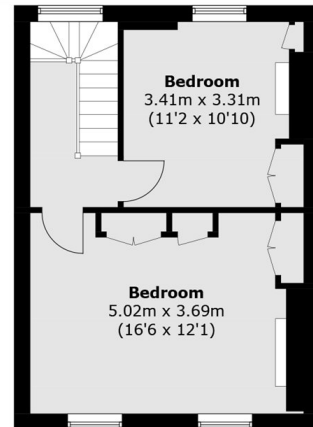
# Pelham Street, London, SW7



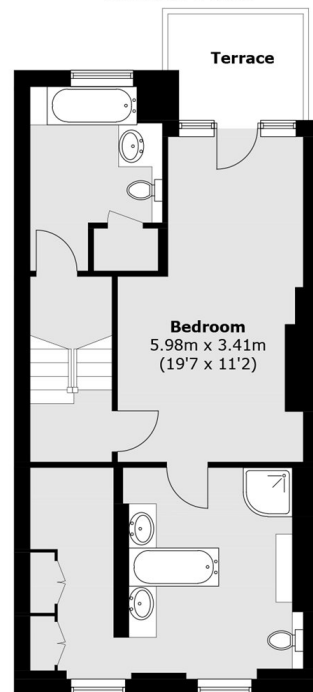
**Lower Ground Floor**



**Ground Floor**



**Second Floor**



**First Floor**

Total area (approx.): 208.4 sq. m (2,244.1 sq. ft)  
Terrace area : 4.7 sq. m (50.5 sq. ft)