



## Avenue Gardens, W3

£639,950

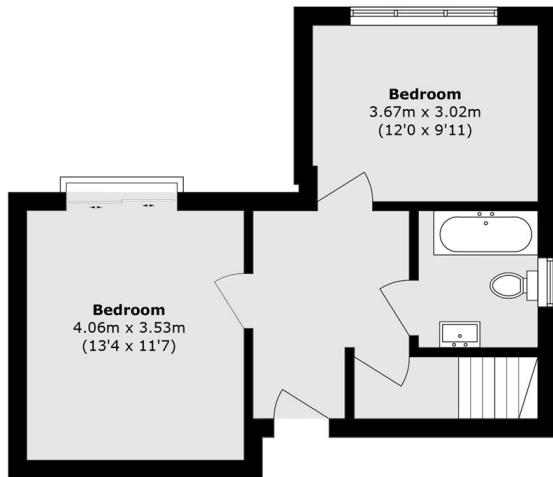
Avenue Gardens situated in the highly regarded Mill Hill Conservation area. A newly converted two bedroom period conversion apartment split over two floors. The flat has been finished to the highest standard throughout, has access to parking on the street and is offered with no onward chain.

Avenue Gardens is within 500 metres of Acton Town station (Piccadilly & District Line) and within half a mile of South Acton station (Overground).

### Features

- Over 1000sqft
- Newly Converted
- No onward chain
- Two Bedrooms
- Two Bathrooms
- Duplex Apartment

# Avenue Gardens, London, W3



**First Floor**



**Second Floor**

Total area (approx.): 94.7 sq. m (1019.3 sq. ft)