



## SLOANE COURT EAST, SW3

£1,225,000

Top-floor 1-bed penthouse  
South-facing, great light and views  
Bright reception room  
Peaceful bedroom  
Lift, porter, near Sloane Square

@marshandparsons  
marshandparsons.co.uk

MARSH &  
PARSONS



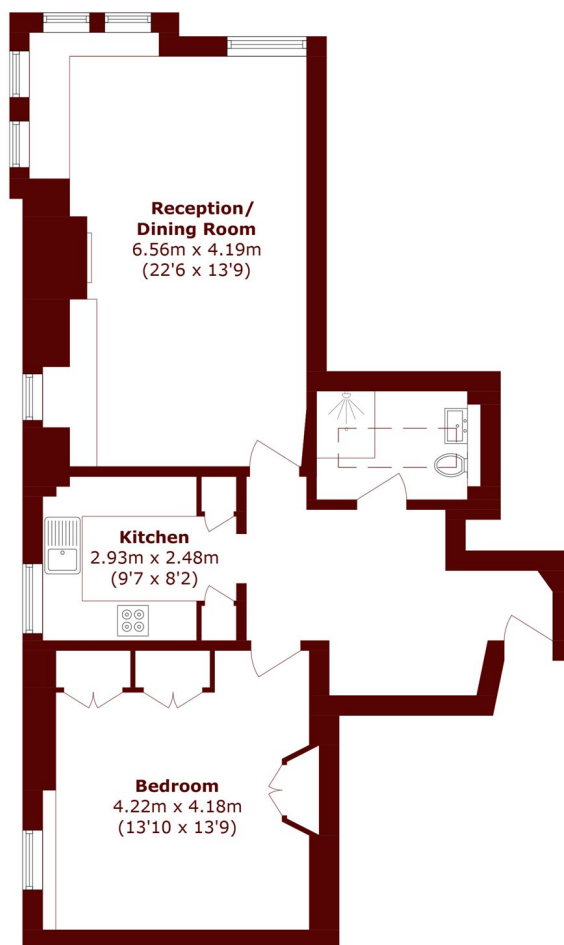
# ABOUT THE PROPERTY

A lovely one-bedroom penthouse in Sloane Court East, SW3, offering a rare sense of calm right in the middle of Chelsea.

Set on the top floor of a well-kept building with a lift and porter, the flat feels private and tucked away, with the added benefit of being bright throughout the day thanks to its south-facing aspect. The views are a real highlight open, sunny, and far-reaching enough to give the space an airy, uplifting feel.



# STEP INSIDE SLOANE COURT EAST



## Fourth floor

Total Area (approx.): 67.1 sq. m (722.2 sq. ft)

Chelsea  
020 7591 5580

Energy Rating: We aim to make our particulars both accurate and reliable. However, they are not guaranteed; nor do they form part of an offer or contract. If you require clarification on any points then please contact us, especially if you're traveling some distance to view. Please note that appliances and heating systems have not been tested and therefore no warranties can be given as to their good working order

MARSH &  
PARSONS