



St. Matthew's Road, Brixton, SW2

2 bedroom flat - purpose built for sale

£400,000

Leasehold

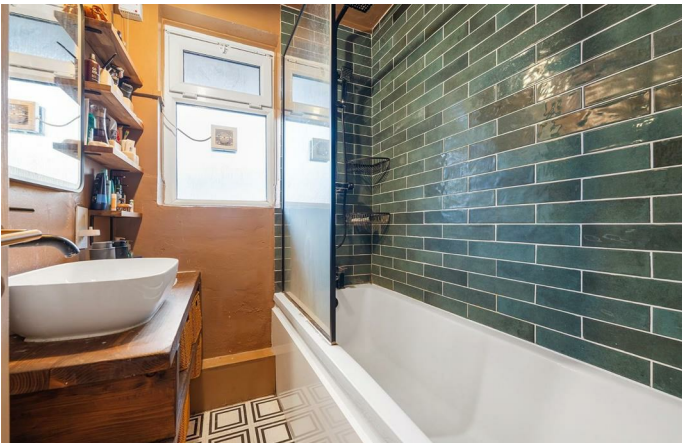
Property Details

This charming two double bedroom, two-bathroom apartment occupies a bright 2nd floor position within a well-maintained purpose-built development. The heart of the home is the open-plan reception space, offering ample room for both relaxing and entertaining, with space for comfortable seating and dining. The renovated kitchen features modern handleless cabinetry, generous worktop space and integrated appliances, flowing seamlessly into the living area and enhancing the sense of light and openness. Doors lead out to a private balcony, providing a pleasant extension of the living space. Both bedrooms are well-proportioned doubles, ideal for sharers, served by two bathrooms including one with a walk-in shower and a modernised family bathroom complete with a bath, perfect for long soaks. Further benefits include a dedicated utility space, additional storage, ample resident parking (permit required), and a peaceful setting within a quiet, well-established block.

Features

- Two double bedrooms
- Two bathrooms
- Private balcony
- Bright 2nd floor position
- Open-plan reception with modern kitchen
- Bright and airy
- Ample resident parking (permit required)
- Central location in Brixton
- Short walk to Brockwell Park
- Excellent transport links

Council tax band B EPC rating B (82)

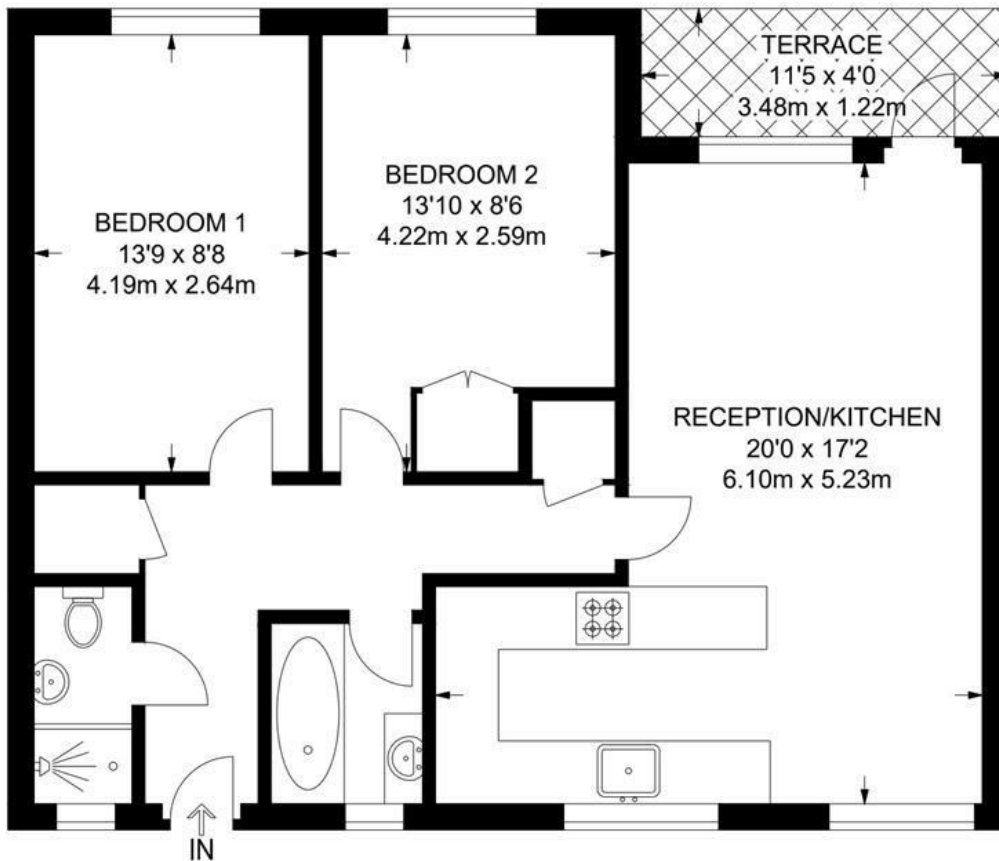




St. Matthew's Road, Brixton, SW2

St. Matthew's Road, SW2
2 Bedroom Flat

APPROXIMATE GROSS INTERNAL AREA: **687 SQ FT / 63.8 SQ M**



SECOND FLOOR



While we try our very best, floor plans are produced as a guide only and we take no responsibility for the precise accuracy with which any property is represented.

St. Matthew's Road, Brixton, SW2

