
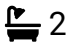



## 17 Scugdale Close,

Guide Price £325,000

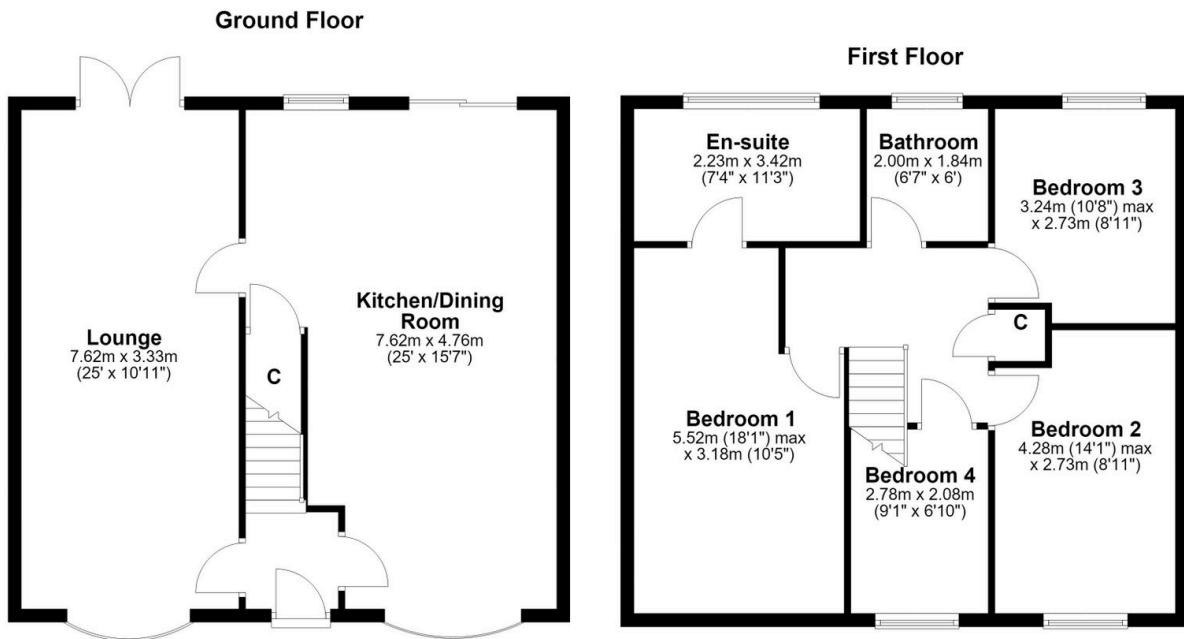
 4  2  2



The Yorkshire Property Agency is delighted to introduce this modern and stylish four-bedroom detached family home located in the popular North Yorkshire market town of Yarm. This wonderful family home offers excellent contemporary space in a great location for nearby amenities and benefits from a chain-free sale.

## Key Features

- Detached family home
- Two bathrooms
- Off-street parking
- Council tax band D
- Chain-free sale
- Four bedrooms
- Landscaped rear garden
- detached garage
- Double-fronted
- Excellent location for local amenities



This floorplan is for illustrative purposes only and is not 100% to scale. Measurements of Rooms, Windows, Doors and any other items are an approximate and no responsibility is taken for any error, misstatement or omission. Items such as bathroom suites, or kitchens are representative only and may not look like the real item. Made by Daniel Kitching Photography