



**OVER 60?**

Secure this property  
for up to **59% less!**

**Guide Price**

**£400,000**

**Freehold**

3x  1x  1x 

**Ormesby Close, London,  
SE28**

*Wards*  
Helping you move forwards





## Main features

- Well presented terraced house with allocated parking
- Cul-de-sac location
- Buses to the Elizabeth Line and Abbey Wood Station
- Low maintenance rear garden
- First floor bathroom

## Accommodation

### GROUND FLOOR

Porch

Lounge: 15'8 x 13'5 (4.78m x 4.09m)

Kitchen: 15'8 x 9'10 (4.78m x 3.00m)

### FIRST FLOOR

Landing

Bedroom 1: 12'1 x 9'5 (3.69m x 2.87m)

Bedroom 2: 11'1 x 9'3 (3.38m x 2.82m)

Bedroom 3: 7'6 x 5'9 (2.29m x 1.75m)

Bathroom

### OUTSIDE

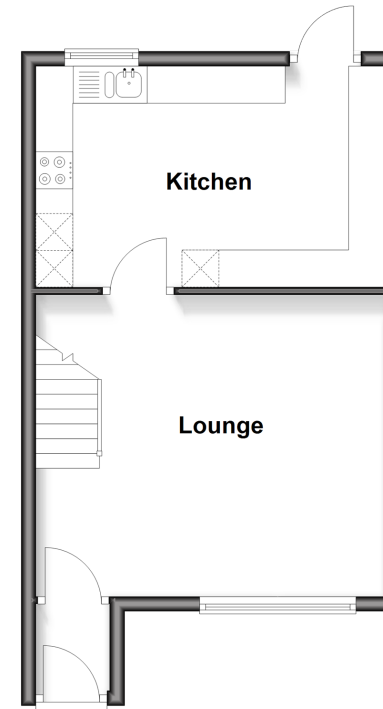
Front Garden

Allocated Parking

Rear Garden

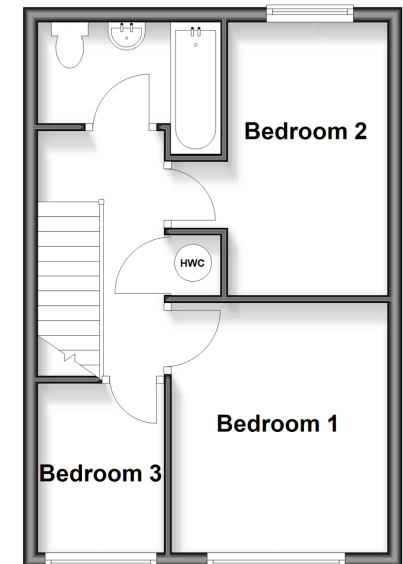
### Ground Floor

Approx. 35.1 sq. metres (377.9 sq. feet)



### First Floor

Approx. 33.8 sq. metres (364.3 sq. feet)



Call Barnehurst - 01322 335525 ■ [wardsof Kent.co.uk](http://wardsof Kent.co.uk)

■ Legal advice should be taken to verify fixtures/fittings, planning, alterations and/or lease details  
 ■ Through a Homewise Home For Life Plan people aged 60+ can secure this property for up to 50% less, by purchasing a Lifetime Lease.

■ Appliances & services are untested, dimensions are approximate and floor plans are not to scale