



Bridge Court, Victoria Park, Hereford

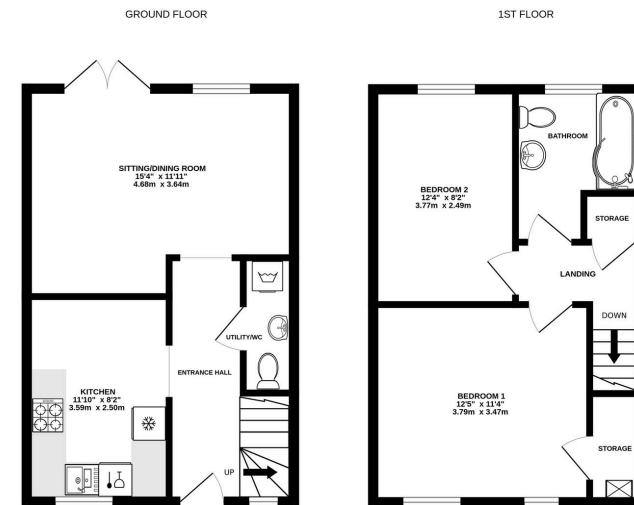
Guide Price £235,000

🛏 2 🍽 1 🚗 1



- No Onward Chain
- 2 Double Bedrooms
- Modern Kitchen & Bathroom
- Allocated Parking
- Private Garden With Shed
- Immaculately Presented Throughout





A Beautifully Presented 2 Double Bedroom Terrace Home, offering stylish, well-proportioned living within a sought after residential setting close to Hereford city centre. Offered With No Onward Chain.

