



30 Leslie Grove, Calverton – NG14 6GL

Guide Price **£300,000**





30 Leslie Grove

Calverton, Nottingham

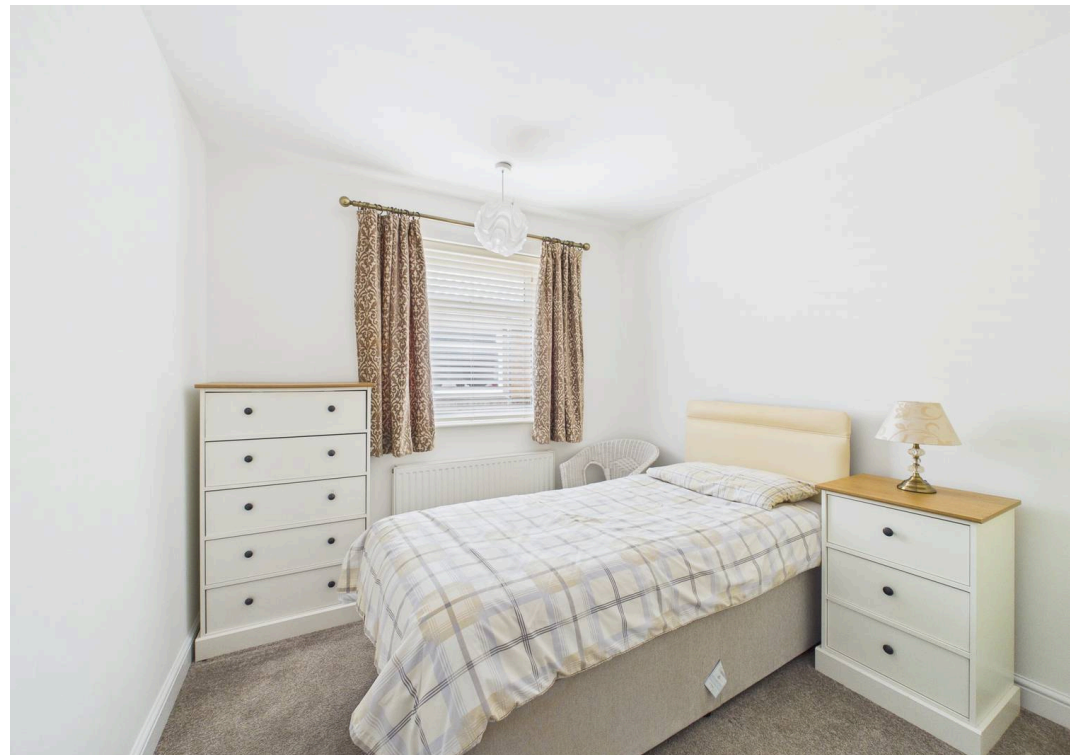
NO CHAIN! 3-bed detached bungalow in Calverton offering versatile accommodation for those seeking the benefits of single-storey living! Well-presented, multi-vehicle parking and a south-facing garden!

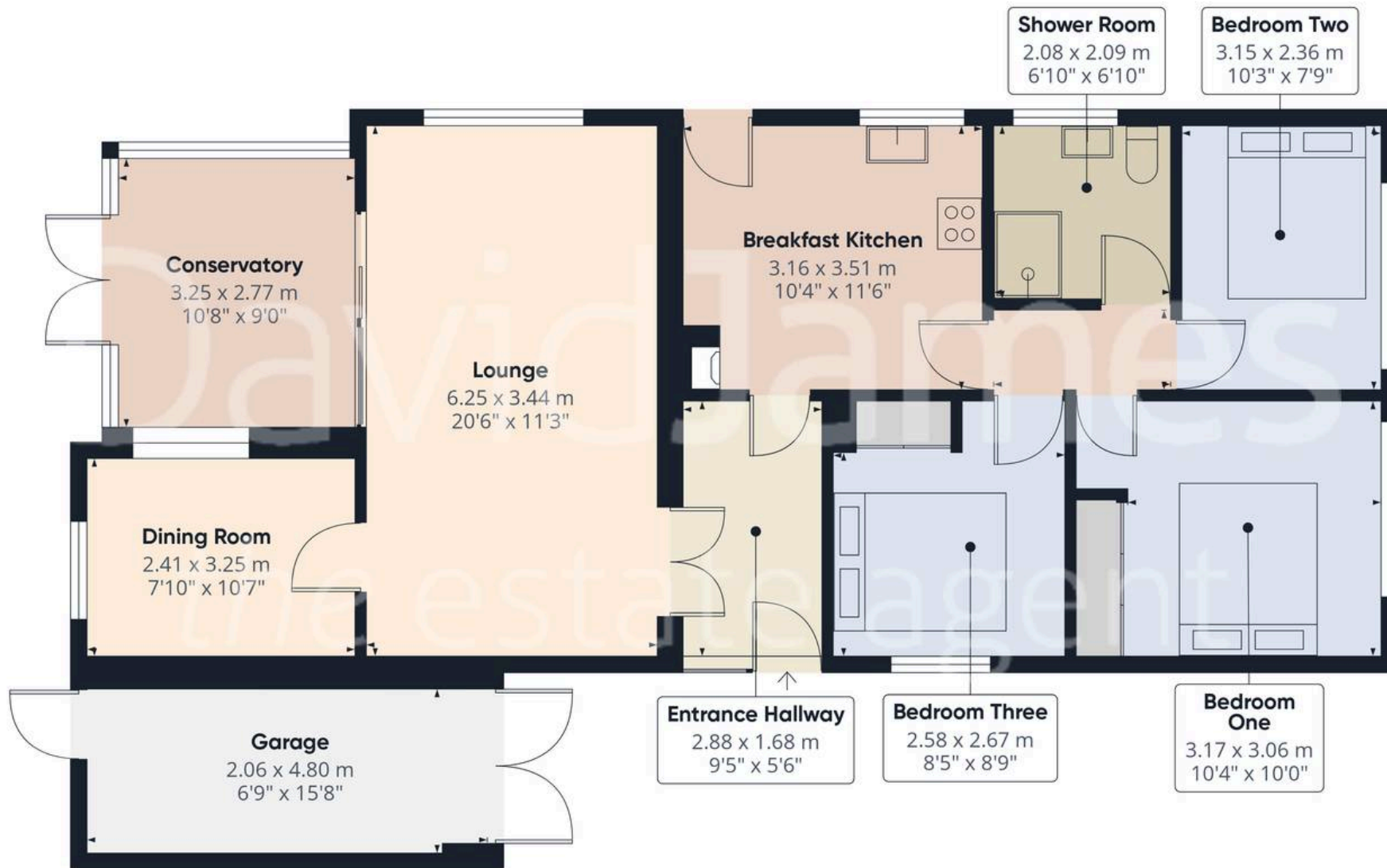
Council Tax band: C

Tenure: Freehold

- Well-presented detached bungalow
- Offered to the market with no upward chain
- Ideal for those seeking the benefits of single-storey living
- Desirable cul-de-sac position in the highly sought after village of Calverton
- Bright and spacious lounge, versatile dining room and conservatory
- Breakfast kitchen with a range of fitted units and a feature multi-fuel stove burner
- Three double bedrooms (two featuring fitted wardrobes)
- Modern three-piece shower room fitted with a large enclosure and tiling
- South-facing landscaped garden with paved seating areas, lawn and decorative stone detailing
- Gated multi-vehicle driveway, car-port and garage/store







Approximate total area⁽¹⁾

99.2 m²
1068 ft²

(1) Excluding balconies and terraces

Calculations reference the RICS IPMS 3C standard. Measurements are approximate and not to scale. This floor plan is intended for illustration only.

GIRAFFE360





David James Estate Agents

98-100 Front Street, Arnold - NG5 7EJ

0115 955 5550 • arnold@david-james.com • www.david-james.com

These particulars are produced in good faith and are set out as a general guide only. Measurements are approximate and floor plans are for illustrative purposes only. Services have not been tested. We have established professional relationships with third-party suppliers for the provision of services to Clients, details of which can be found on the property listing page on our website.