

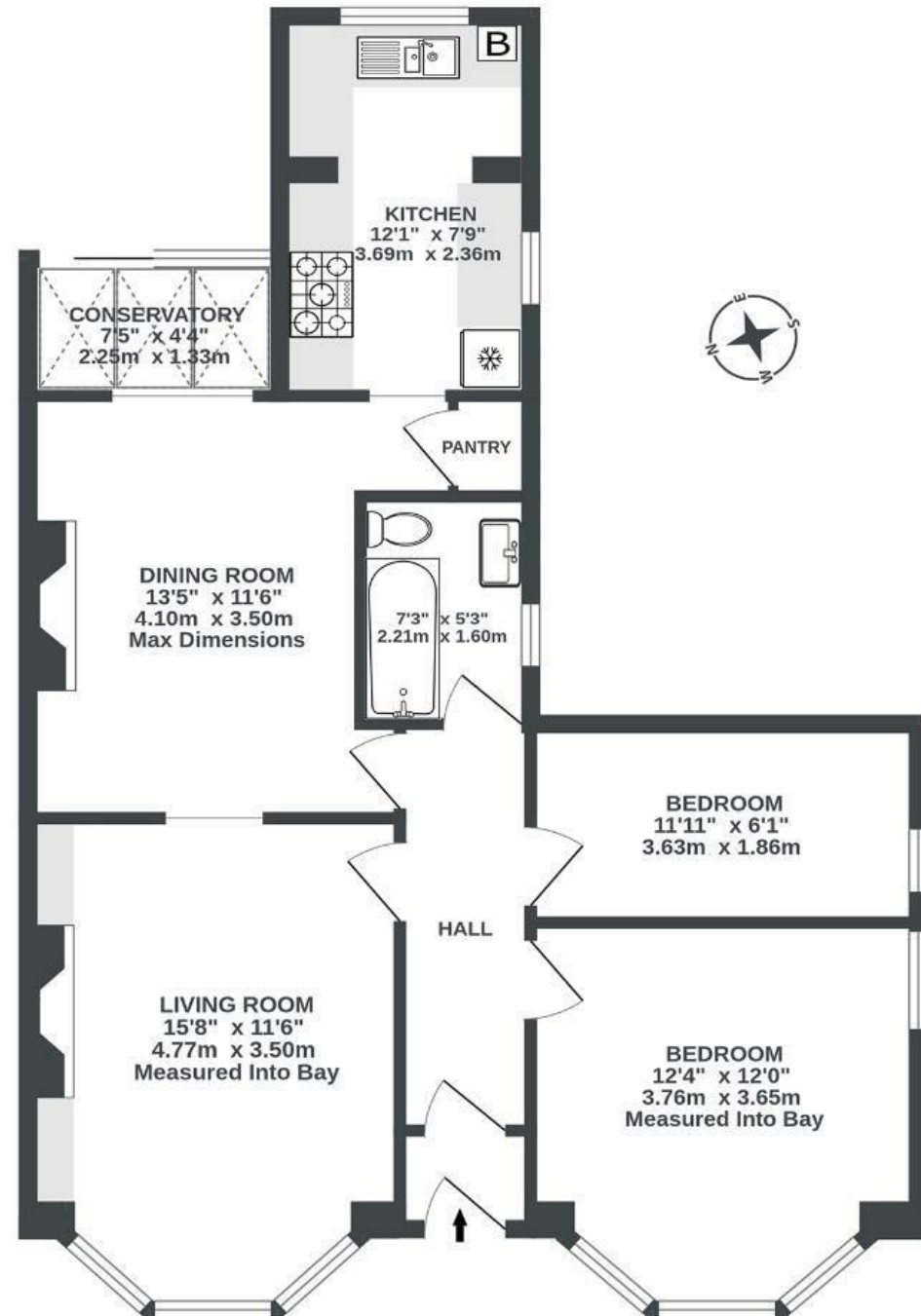
# Gloucester Road

## HORFIELD

APPROXIMATE FLOOR AREA  
69.6 SQM / 749 SQFT



GROUND FLOOR  
749 sq.ft. (69.6 sq.m.) approx.



Illustrations are for reference purposes only, measurements are approximate, not to scale.

Boardwalk

# Gloucester Road

## HORFIELD, BRISTOL

£

£350,000



BS7 8UG

zzz

2 Bedrooms



1 Bathrooms

*"We love the period features of this property, particularly the original Victorian fireplace in the living room with painted tiles, the ceiling cornices and picture rails. The separate dining room and kitchen makes the flat feel quite spacious, and the garden is perfect for entertaining in the summer, having BBQs and growing veg and having friends round. We've had lots of parties here and our friends love it. The location is perfect for going to coffee shops and pubs down Gloucester Road."*

