



24 Winston Gardens  
Boston, PE21 9DF

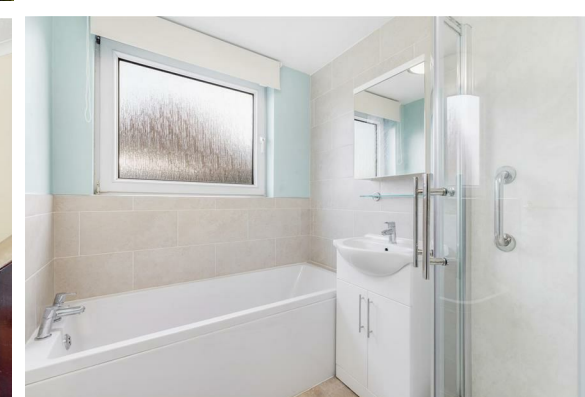
Offers In The Region Of £300,000



## 24 Winston Gardens

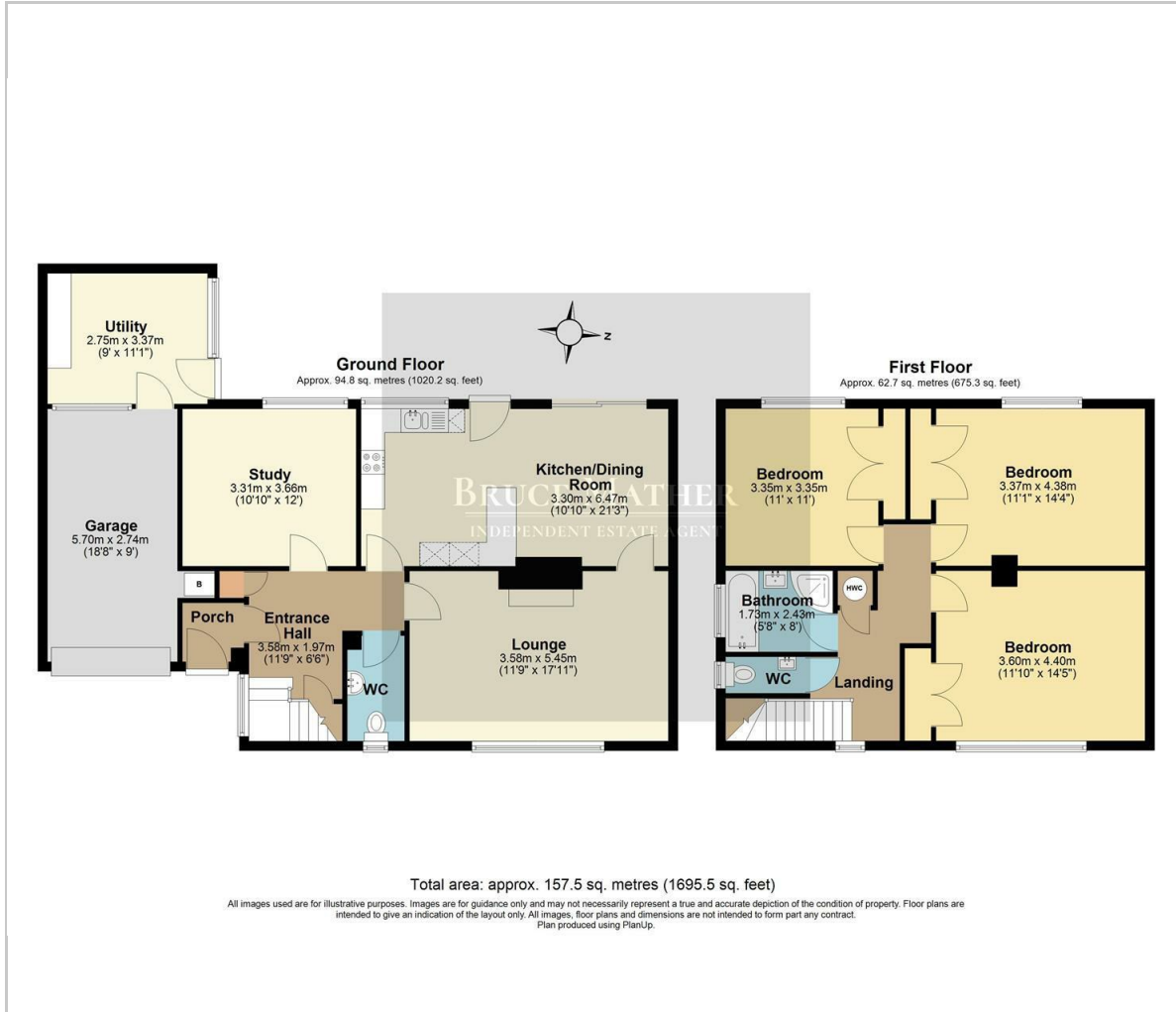
Boston, PE21 9DF

A well located 4 bedroom detached house with a delightful garden, close to the hospital in a favourable location in Boston Lincolnshire NO CHAIN. A well portioned house with parking and a lovely garden to the rear, the accommodation comprises of 3 bedrooms and bathroom and separate wc upstairs, sitting room, open plan spacious kitchen diner leading out through patio doors to the garden, bedroom 4 currently being used as a study, a downstairs cloakroom, entrance hall and utility room completing downstairs. To the front is parking, a small garden and an integrated garage, to the rear is a charming spacious garden. Please call Bruce Mather Estate Agents on 01205 365032 viewing is highly recommended.

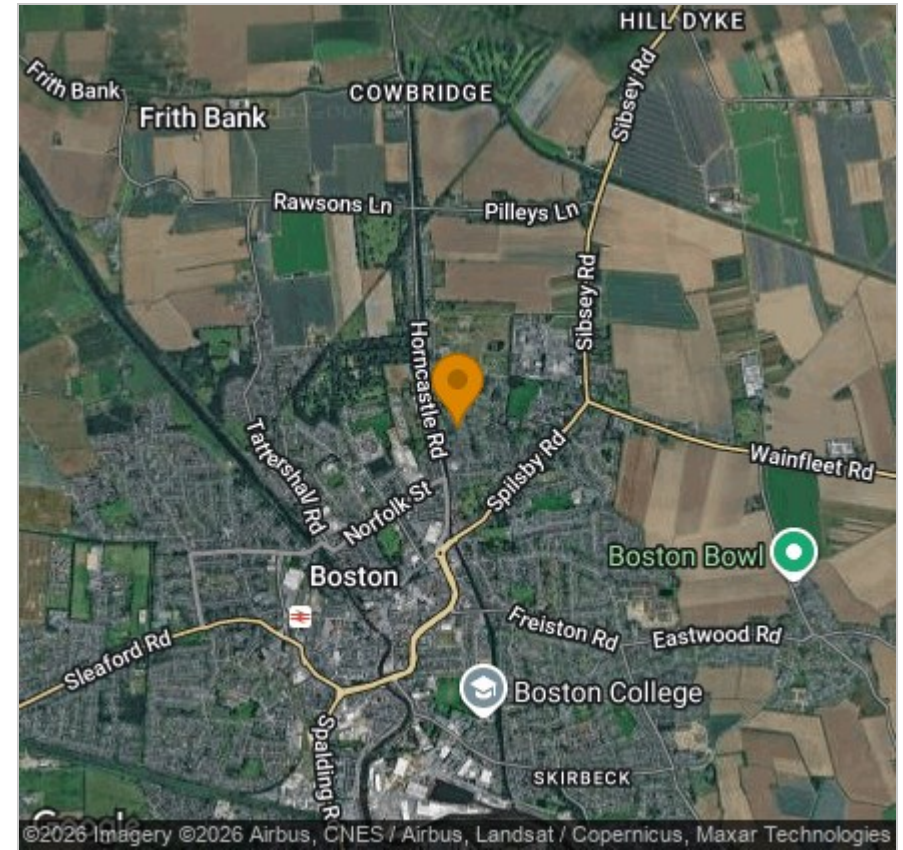




## Floor Plan

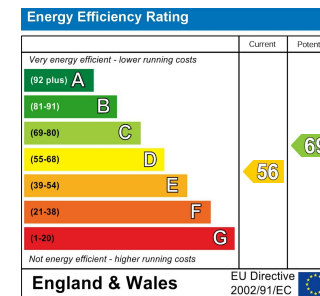


## Area Map



## Viewing

Please contact our Boston Residential Office on 01205 365032 if you wish to arrange a viewing appointment for this property or require further information.



These particulars, whilst believed to be accurate are set out as a general outline only for guidance and do not constitute any part of an offer or contract. Intending purchasers should not rely on them as statements of representation of fact, but must satisfy themselves by inspection or otherwise as to their accuracy. No person in this firm's employment has the authority to make or give any representation or warranty in respect of the property.

6 Pump Square, Boston, Lincs, PE21 6QW  
Tel: 01205 365032 Email: sales@brucemather.co.uk www.brucemather.co.uk

