





NEXA Properties are pleased to be offering this very well presented two bedroom first floor flat situated within a cul-de-sac and located within a short walk of Hayling Island seafront.

This property is comprised of a spacious open plan lounge with modern kitchen, two good size double bedrooms each with built in cupboards and a bathroom suite with shower over bath, basin and WC.

Externally, the building offers communal gardens to the front and rear.

Video available on request.

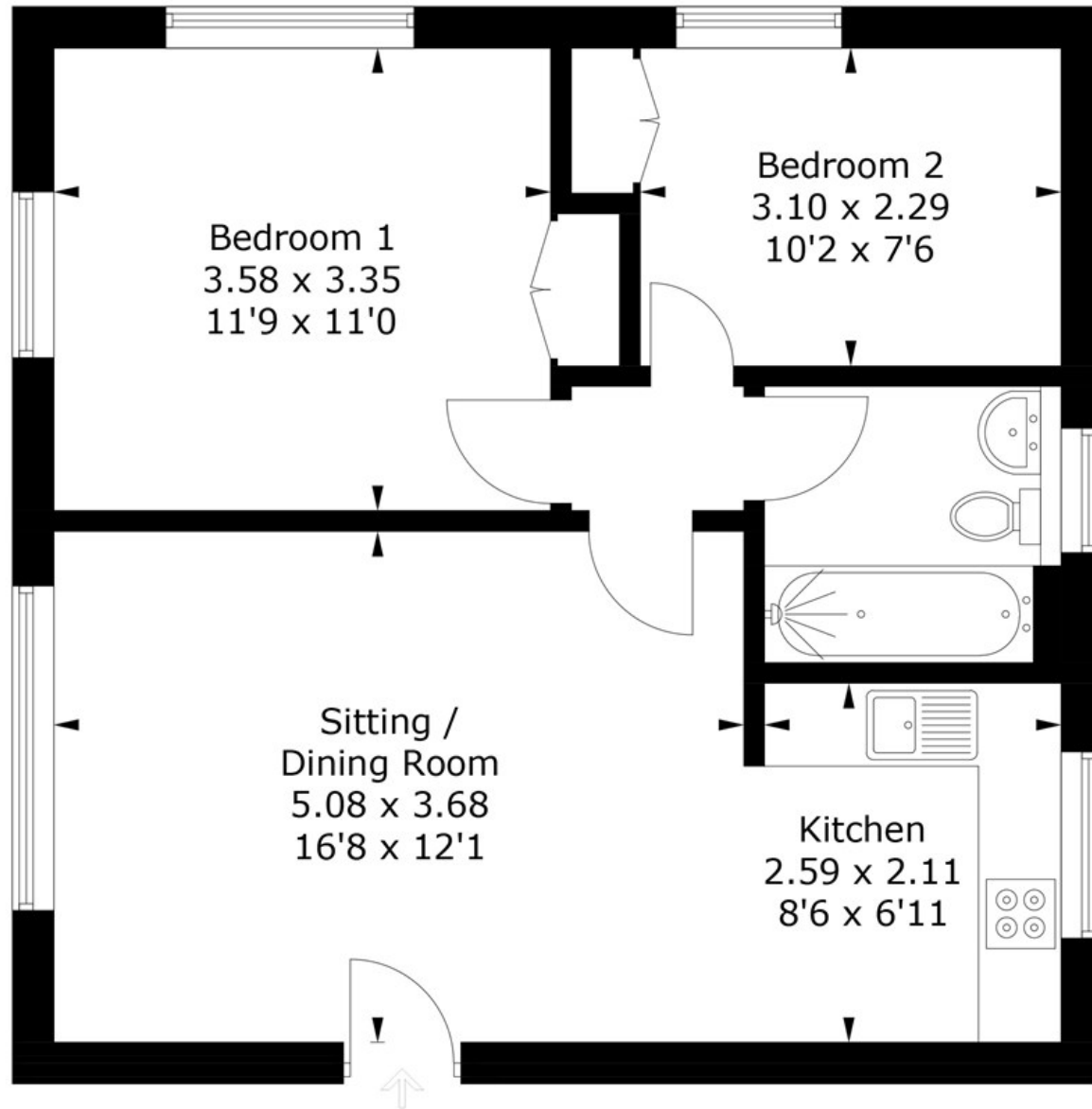
Viewings highly recommended.

- MODERN FLAT
- DOUBLE BEDROOMS
- GAS CENTRAL HEATING
- COMMUNAL GARDENS
- AVAILABLE LATE MAY
- WALKING DISTANCE TO BEACH
- FIRST FLOOR
- UNFURNISHED



Winsor Close, PO11 9RF

Approximate Gross Internal Area = 52.7 sq m / 567 sq ft



First Floor

PRODUCED FOR NEXA PROPERTIES

Whilst every attempt has been made to ensure the accuracy of the floorplan, measurements of doors, windows and rooms are approximate. These plans are for representation purposes only as defined by RICS Code of Measuring Practice and used as such by any prospective purchaser. (ID875398)