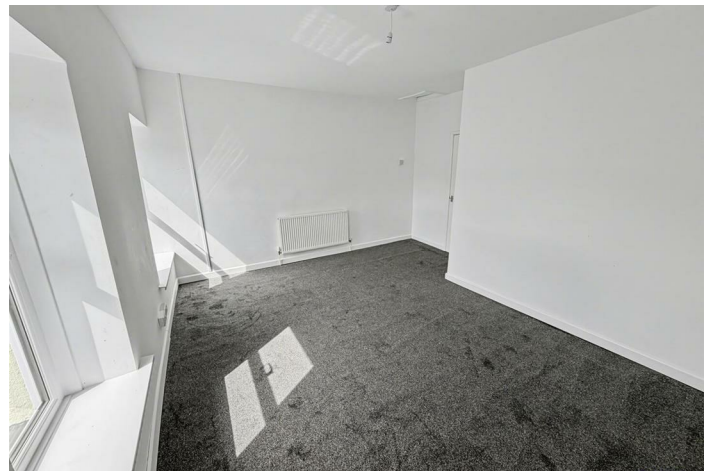
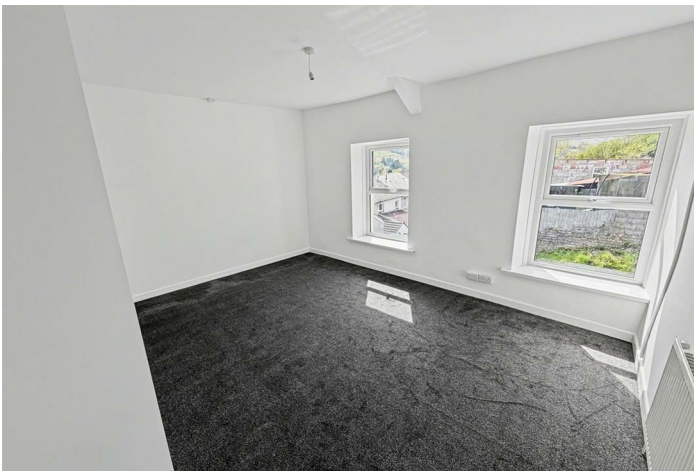


FREEHOLD



House - End Terrace (EPC Rating: E)

7 SUNNYBANK TERRACE, TREORCHY, CF42
6ND

£164,995



3



|



|



E

3 Bedroom House - End Terrace located in Treorchy

Nestled in the charming area of Sunnybank Terrace, Treorchy, this delightful end terrace house presents an excellent opportunity for those seeking a comfortable and inviting home. The property boasts a prime location, offering easy access to local amenities, schools, and transport links, making it ideal for families and professionals alike.

As you step inside, you will be greeted by a warm and welcoming atmosphere. The layout of the house is both practical and spacious, providing ample room for relaxation and entertaining. The living areas are filled with natural light, creating a bright and airy environment that enhances the overall appeal of the home.

The kitchen is well-appointed, offering a functional space for culinary pursuits, while the adjoining dining area is perfect for family meals or gatherings with friends. The bedrooms are generously sized, providing a peaceful retreat at the end of the day.

Outside, the property benefits from a modest garden area, ideal for enjoying the fresh air or indulging in a spot of gardening. The end terrace position allows for added privacy and a sense of space, making it a perfect

Living Room

21x6 x 15x3

This inviting living room offers a generous space characterised by fresh white walls and plush dark carpeting, creating a calm and welcoming atmosphere. It benefits from natural light through a front-facing window and features a convenient under-stairs storage cupboard, enhancing its practicality.

Kitchen / Dining Area

18x3 x 13x9

The kitchen and dining area presents a modern and practical layout with sleek white cabinetry complemented by dark countertops. It features an integrated oven and hob with an extractor hood, along with space for a washing machine. The area is finished with stylish marble-effect wall tiling and a matching floor, designed to be both attractive and easy to maintain. A breakfast bar adds a casual dining option, while a rear door leads directly into the courtyard.

Bathroom

8x7 x 9x3

This spacious bathroom is fitted with a classic suite comprising a bathtub, pedestal wash basin, and toilet. The room is enhanced by patterned black and white floor tiles and half-height marble-effect wall tiling, maintaining a clean and fresh feel. Two windows ensure the space benefits from plenty of natural light and ventilation.

Landing

The landing area at the top of the stairs offers access to the bedrooms and is presented with white walls and dark carpet flooring, continuing the home's clean and simple design aesthetic.

Bedroom 1

15x5 x 13x5

This double bedroom is bright and airy, featuring two front-facing windows that allow plenty of daylight to fill the room. The space is completed with white walls and dark carpeting, providing a neutral backdrop for personal styling.

Bedroom 2

13x8 x 8x1

A well-proportioned bedroom with a single front-facing window, white walls, and dark carpet, offering a peaceful retreat with ample space for furnishings.

Bedroom 3

10x6 x 9 x5

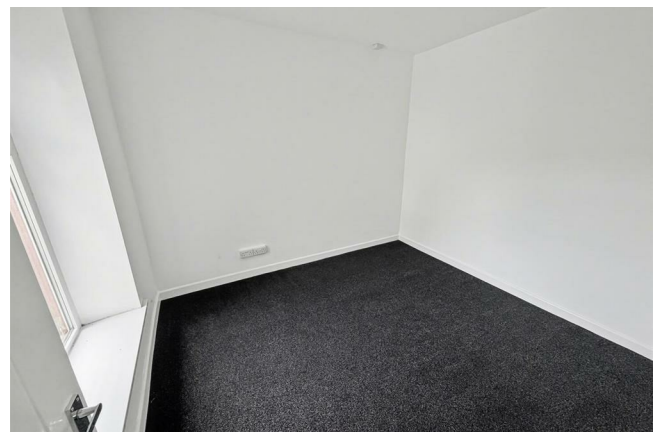
This bedroom features a single window overlooking the rear, creating a quiet and private atmosphere. It is finished with white walls and dark carpeting, providing a flexible space suitable for various uses.

Rear Garden

The rear garden offers a private, enclosed outdoor space with a paved patio area and mature stone wall boundaries. The garden features a raised section with natural stone steps and is bordered by greenery, making it an ideal spot for outdoor relaxation or gardening projects.

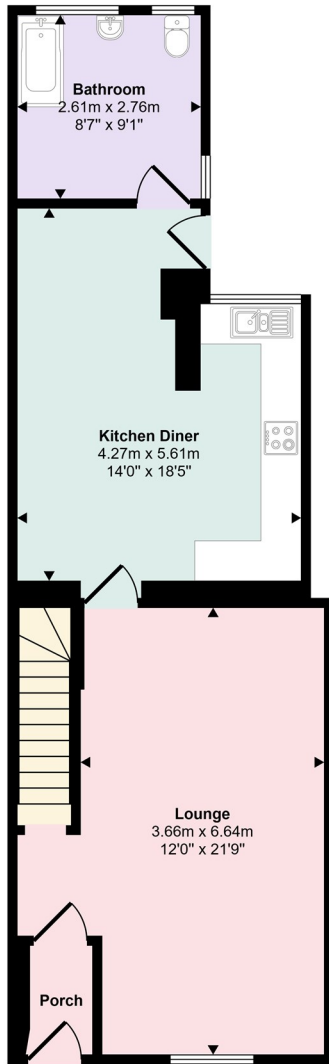
Front Exterior

The front exterior of the property is finished with a light textured render and has a traditional design. The front door is positioned to the side with a small window above, and the house is set slightly above street level with a stone retaining wall and steps leading up to the entrance, offering a welcoming and charming street presence.

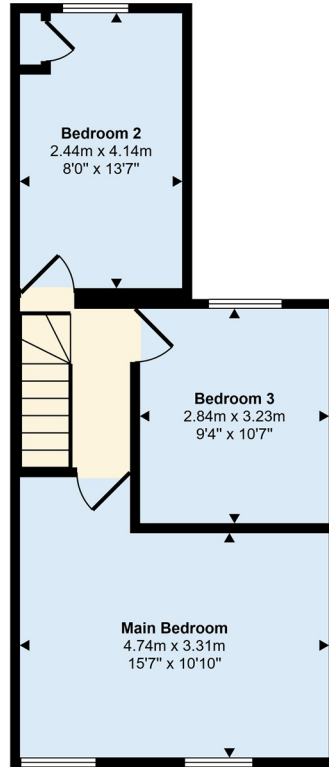


TONYPANDY | 97A DUNRAVEN STREET, TONYPANDY, CF40 1AR

Approx Gross Internal Area
103 sq m / 1112 sq ft



Ground Floor
Approx 61 sq m / 656 sq ft



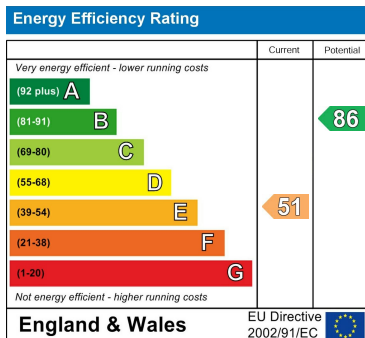
First Floor
Approx 42 sq m / 455 sq ft

This floorplan is only for illustrative purposes and is not to scale. Measurements of rooms, doors, windows, and any items are approximate and no responsibility is taken for any error, omission or mis-statement. Icons of items such as bathroom suites are representations only and may not look like the real items. Made with Made Snappy 360.

Council Tax Band

A

Energy Performance Graph



Call us on

01443 435599

sales@osborneestates.co.uk

osborneestates.co.uk

Agents Note: Whilst every care has been taken to prepare these particulars, they are for guidance purposes only. All measurements are approximate and are for general guidance purposes only and whilst every care has been taken to ensure their accuracy, they should not be relied upon and potential buyers are advised to recheck the measurements.

