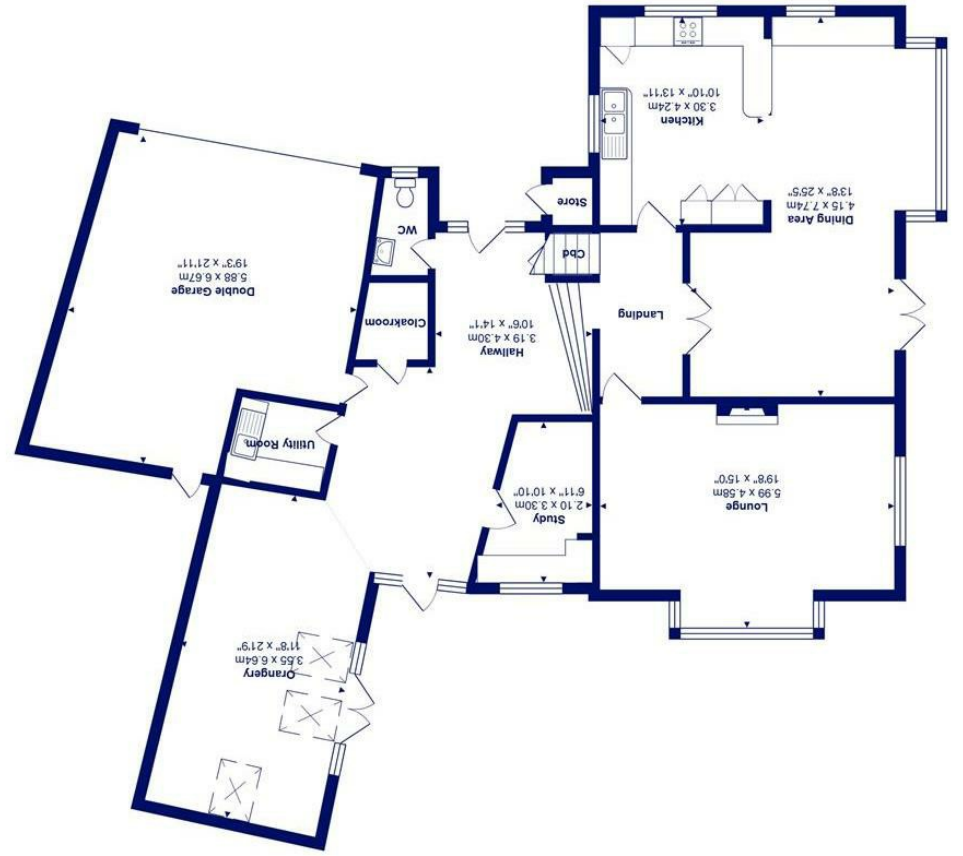




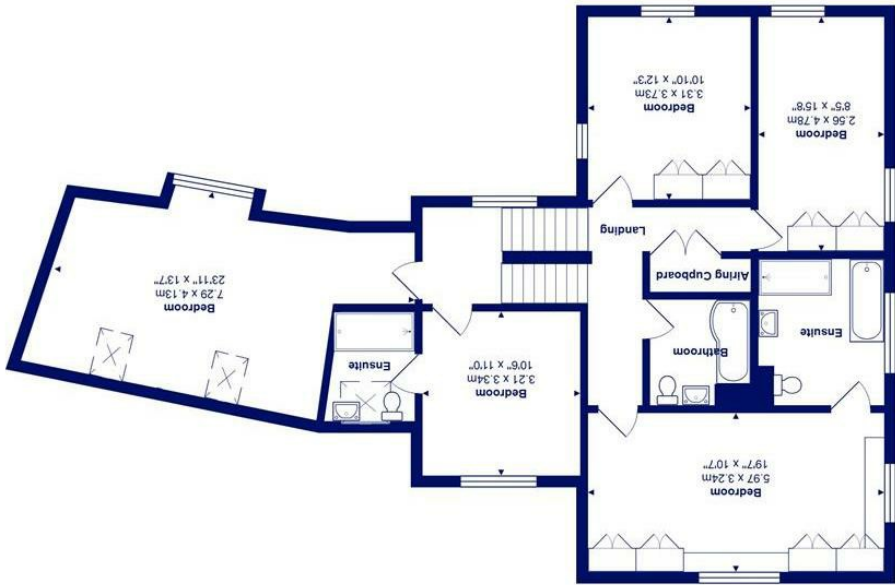
Total Area: 289.8 m² ... 3120 ft²
All measurements are approximate and for display purposes only.



Ground Floor



First Floor



8 Hinton Wood Avenue, Highcliffe On Sea, BH23 5AH

£1,500,000

Mitchells
1963 — TODAY

An outstanding home of about 3120sqft, built in 2000 by Archstone Developments and subsequently extended and improved by the current owners. Holly Corner exudes style and quality and is set in glorious landscaped gardens that back onto the local Nature Reserve, set behind electric security gates and just moments from the bustling village centre, cliff top and beach.

This wonderful split-level home is presented in show home order and has been meticulously maintained. We remember when this house was first built and it was exceptionally well built, ensuring that, in our opinion, it is one of the smartest houses in Highcliffe. The current owners have added a lovely, vaulted garden room extension and have upgraded the house inside and out with it now enjoying superior fittings and extensively landscaped grounds.

- Stunning individual home on a magnificent southwest facing plot
- Five double bedrooms and three luxuriously appointed bath/shower rooms with bespoke fitted wardrobes to four of the bedrooms
- Gorgeous kitchen/day/dining room with top quality units and worktops, integrated appliances, built in cabinetry to the day room and access to one of the sun terraces
- Impressive reception hall with tiled floor leading to the vaulted garden room on the ground floor
- Gas fired central heating with under floor heating to the extension
- Integral double garage with electric door, abundance of secure parking and lush, lawned grounds with personal access to Nea Meadows
- Immaculate presentation inside and out
- An incredibly impressive house situated on the southern end of the prestigious Hinton Wood Avenue

EPC Rating Band: C

Council Tax Band: G

Freehold

Successful buyers will be required to complete online identity checks provided by Lifetime Legal. The cost of these checks is £45 inc. VAT per purchase which is paid in advance, directly to Lifetime Legal. This check verifies your identity in line with our obligations as stipulated by our regulatory body, HMRC

