



## 12 Greenholme Close

Lincoln, LN2 4UH



Book a Viewing!

# £195,000

A modern two bedroom semi-detached house situated at the end of a cul de sac to the North of the Cathedral and University City of Lincoln. The property has well-presented accommodation comprising of Porch, Lounge, Kitchen/Diner, two Double Bedrooms and Family Bathroom. Outside there is a front garden, a gravelled and gated driveway providing off-street parking for multiple vehicles and a private enclosed rear garden. The property benefits from no onward chain and viewing is highly recommended.





#### **SERVICES**

All mains services available. Gas central heating.

**EPC RATING – C.**

**COUNCIL TAX BAND – A.**

**LOCAL AUTHORITY** - Lincoln City Council.

**TENURE** - Freehold.

**VIEWINGS** - By prior appointment through Mundys.

#### **LOCATION**

The historic Cathedral and University City of Lincoln has the usual High Street shops and department stores, plus banking and allied facilities, multiplex cinema, Marina and Art Gallery. The famous Steep Hill leads to the Uphill area of Lincoln and the Bailgate, with its quaint boutiques and bistros, the Castle, Cathedral and renowned Bishop Grosseteste University.





## ACCOMMODATION

### PORCH

3' 8" x 3' 1" (1.14m x 0.96m)

### LOUNGE

13' 10" x 11' 4" (4.22m x 3.46m) With staircase to first floor, understairs storage cupboard, double glazed window to the front aspect and radiator.

### KITCHEN/DINER

13' 9" x 8' 10" (4.2m x 2.7m) Fitted with a range of wall and base units with work surfaces over, stainless steel sink with side drainer and mixer tap over, electric oven, gas hob with extractor fan over, integral fridge, freezer and washing machine, tiled splashbacks, radiator, double glazed window to the rear aspect and double glazed French doors to the rear garden.

### FIRST FLOOR LANDING

### BEDROOM 1

10' 8" x 9' 8" (3.26m x 2.96m) With double glazed window to the front aspect, double wardrobe and radiator.

### BEDROOM 2

10' 9" x 7' 7" (3.28m x 2.33m) With double glazed window to the rear aspect and radiator.

### BATHROOM

5' 10" x 5' 6" (1.78m x 1.69m) Fitted with a three piece suite comprising of panelled bath with shower over, pedestal wash hand basin and close coupled WC, towel radiator, part-tiled walls and double glazed window to the rear aspect.

### OUTSIDE

To the front of the property there is a lawned garden and a gravelled driveway providing off-street parking for multiple vehicles. To the side there is a gated gravelled area providing further parking and a shed. To the rear there is a private enclosed garden laid mainly to lawn with a block paved patio seating area.





#### WEBSITE

Our detailed website shows all our available properties and also gives extensive information on all aspects of moving home, local area information and helpful information for buyers and sellers. This can be found at [mundys.net](http://mundys.net)

#### SELLING YOUR HOME – HOW TO GO ABOUT IT

We are happy to offer FREE advice on all aspects of moving home, including a Valuation by one of our QUALIFIED/SPECIALIST VALUERS. Ring or call into one of our offices or visit our website for more details.

#### REFERRAL FEE INFORMATION – WHO WE MAY REFER YOU TO

Sills & Betteridge, Ringrose Law LLP, Burton & Co, Taylor Rose, Bridge McFarland, Dale & Co, Bird & Co and Gilson Gray who will be able to provide information to you on the Conveyancing services they can offer. Should you decide to use these Conveyancing Services then we will receive a referral fee of up to £150 per sale and £150 per purchase from them.

CWH, J Walter and Calum Lyman will be able to provide information and services they offer relating to Surveys. Should you decide to instruct then we will receive a referral fee of up to £125.

Claverings will be able to provide information and services they offer relating to removals. Should you decide to instruct then we will receive a referral fee of up to £125.

Mundys Financial Services who will be able to offer a range of financial service products. Should you decide to instruct Mundys Financial Services we will receive a commission from them of £250 and in addition, the individual member of staff who generated the lead will receive £50.

#### BUYING YOUR HOME

An Independent Survey gives peace of mind and could save you a great deal of money. For details, including RICS Home Buyer Reports, call 01522 556088 and ask for Steven Spivey MRICS.

#### GETTING A MORTGAGE

We would be happy to put you in touch with our Financial Adviser who can help you to work out the cost of financing your purchase.

#### NOTE

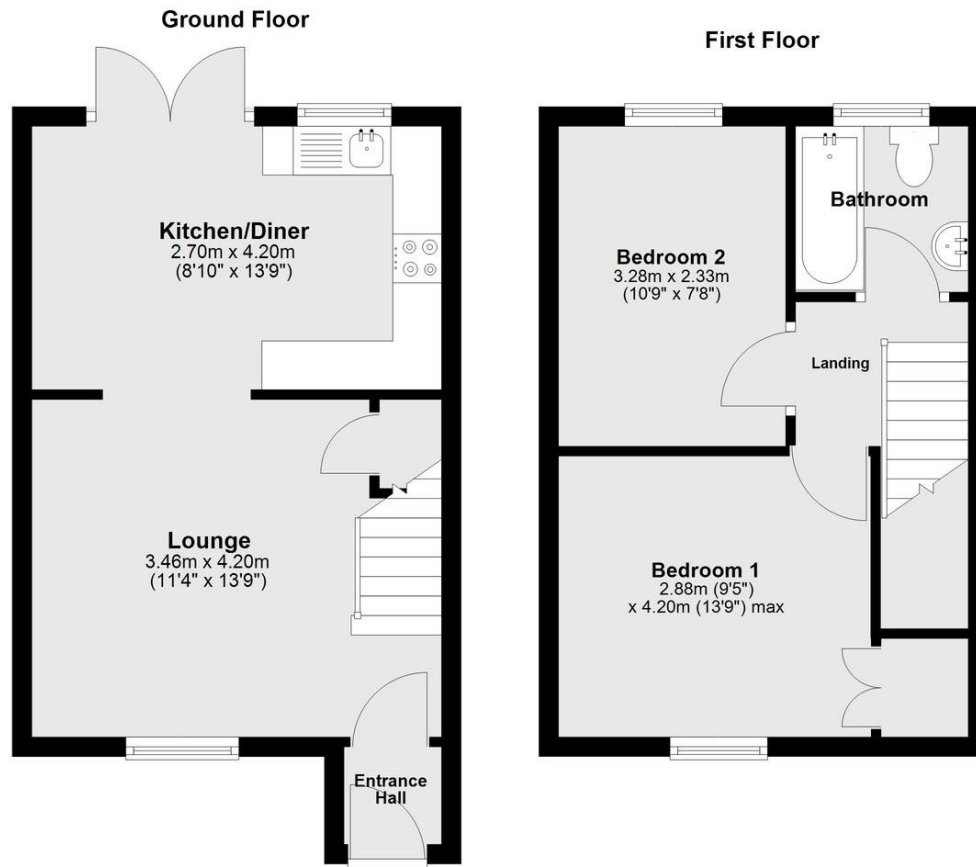
1. None of the services or equipment have been checked or tested.
2. All measurements are believed to be accurate but are given as a general guide and should be thoroughly checked.

#### GENERAL

If you have any queries with regard to a purchase, please ask and we will be happy to assist. Mundys makes every effort to ensure these details are accurate, however they for themselves and the vendors (Lessors) for whom they act as Agents give notice that:

1. The details are a general outline for guidance only and do not constitute any part of an offer or contract. No person in the employment of Mundys has any authority to make or give representation or warranty whatever in relation to this property.
2. All descriptions, dimensions, references to condition and necessary permissions for use and occupation and other details should be verified by your self on inspection, your own advisor or conveyancer, particularly on items stated herein as not verified.

Regulated by RICS. Mundys is the trading name of Mundys Property Services LLP registered in England NO. OC353705. The Partners are not Partners for the purposes of the Partnership Act 1890. Registered Office 29 Silver Street, Lincoln, LN2 1AS.



Total area: approx. 53.7 sq. metres (577.8 sq. feet)

**29 – 30 Silver Street**  
Lincoln  
LN2 1AS  
01522 510044

**22 Queen Street**  
Market Rasen  
LN8 3EH  
01673 847487

**22 King Street**  
Southwell  
NG25 0EN  
01636 813971

**46 Middle Gate**  
Newark  
NG24 1AL  
01636 700888

Agents Note: Whilst every care has been taken to prepare these sales particulars, they are for guidance purposes only. All measurements are approximate and are for general guidance purposes only and whilst every care has been taken to ensure their accuracy, they should not be relied upon and potential buyers are advised to recheck the measurements.



[www.mundys.net](http://www.mundys.net)