



Trundleys Road, SE8

£325,000

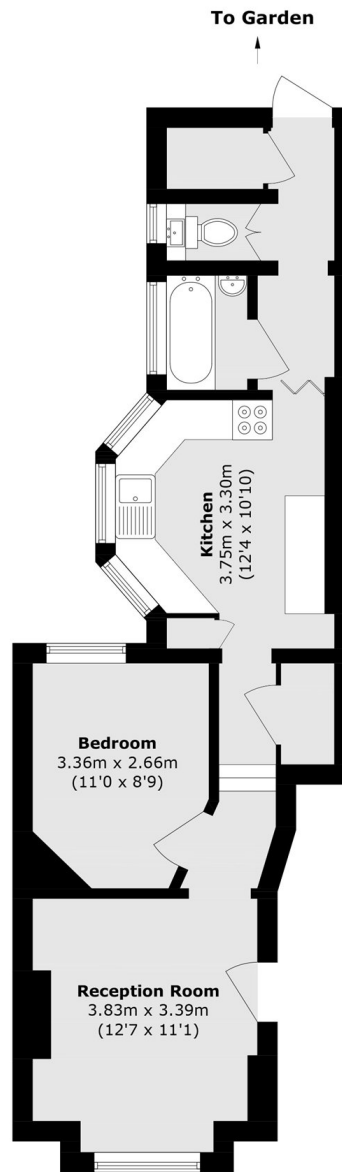
A spacious one-bedroom ground-floor period flat with the added benefit of a private garden. The flat has a large double bedroom, a spacious eat-in kitchen with plenty of room for a dining table, and comfortable living space throughout.

Conveniently situated just a short stroll from Deptford Park and moments from Surrey Quays Overground station, providing excellent connectivity alongside a range of nearby shops, cafés and amenities.

Features

- One Bedroom
- Large Dine in Kitchen
- Beautiful Rear Garden
- Underfloor heating
- Free on-street parking
- Close To Transport Links

Trundleys Road, London, SE8



Total area (approx.): 48.7 sq. m (524.2 sq. ft)