

*Franklyn
James*



Boardwalk Place, Trafalgar Way, E14 5SQ

£2,590 Per Calendar Month



Boardwalk Place, Trafalgar Way, E14 5SQ

£2,590 Per Calendar Month

- Located within the prestigious Boardwalk Place development
- Sought-after waterside location between Poplar Docks and Blackwall Basin
- Stunning two-bedroom, two-bathroom apartment
- Principal bedroom with en-suite bathroom
- Generous second double bedroom
- Modern fully integrated kitchen
- Large private balcony with Marina views
- Allocated parking available by separate negotiation
- Abundance of natural light
- Moments from Canary Wharf and excellent transport links

EPC rating- B
Tax band- E



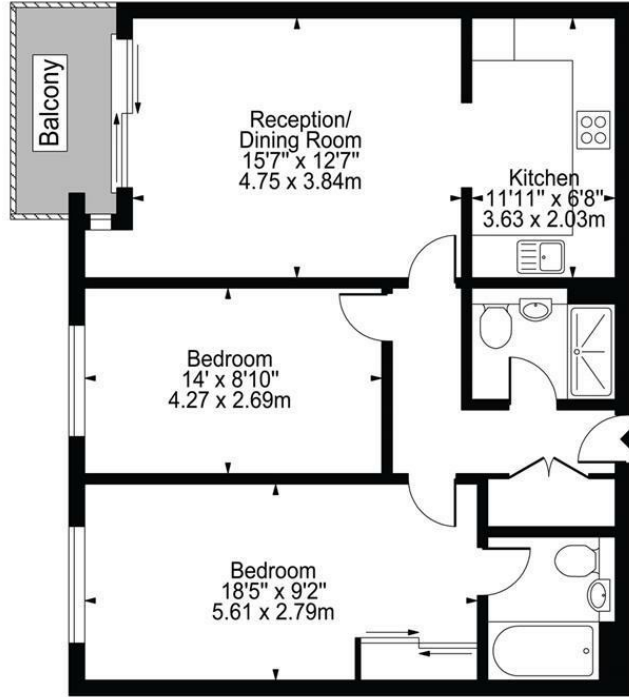
A stunning two bedroom, two bathroom apartment set within the highly desirable Boardwalk Place development. This beautifully presented property features a fully integrated kitchen open plan to a spacious reception room, two generous double bedrooms, including a principal bedroom with en-suite bathroom, a stylish family bathroom and a large private balcony boasting impressive Marina views.

Allocated parking is also available via separate negotiation.

Ideally positioned between Poplar Docks and Blackwall Basin, Boardwalk Place offers an exclusive collection of luxury apartments in one of Canary Wharf's most sought-after residential locations. Perfectly suited to Canary Wharf and City professionals alike, the development is just a short walk across the bridge to the heart of Canary Wharf and its extensive range of shops, restaurants, and transport links.

Boardwalk Place, E14

Approx. Gross Internal Area 757 Sq Ft - 70.33 Sq M

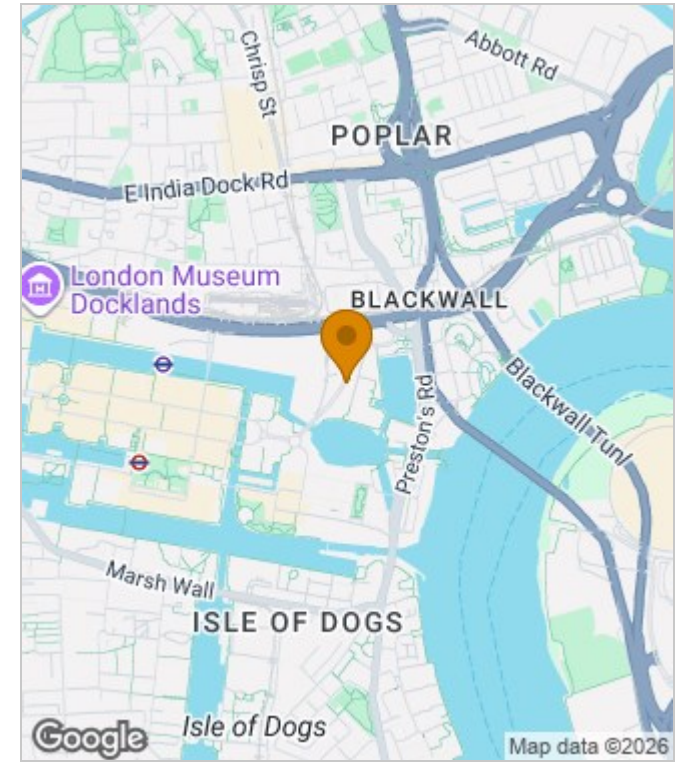


Second Floor

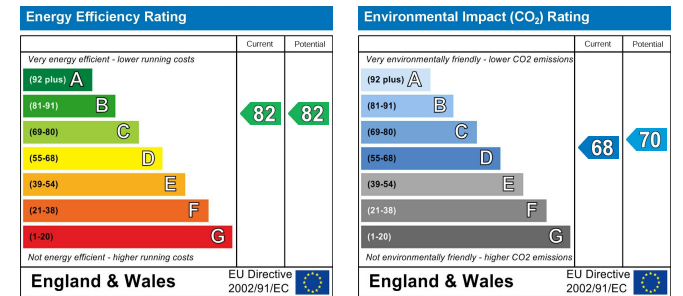
For Illustration Purposes Only - Not To Scale Floor Plan by Humble Spy Photography

This floor plan should be used as a general outline for guidance only and does not constitute in whole or in part an offer or contract. Any intending purchaser or lessee should satisfy themselves by inspection, searches, enquiries and full survey as to the correctness of each statement. Any areas, measurements or distances quoted are approximate and should not be used to value a property or be the basis of any sale or let.

Area Map



Energy Performance Graph



These particulars, whilst believed to be accurate are set out as a general outline only for guidance and do not constitute any part of an offer or contract. Intending purchasers should not rely on them as statements of representation of fact, but must satisfy themselves by inspection or otherwise as to their accuracy. No person in this firm's employment has the authority to make or give any representation or warranty in respect of the property.



29 Narrow Street, London, E14 8DP
Tel: 02077911777 Email: lettings@franklynjames.co.uk <https://www.franklynjames.co.uk>