

Jeremy's Green,, Edmonton, N18 2NB
Offers In Excess Of £270,000

Castles

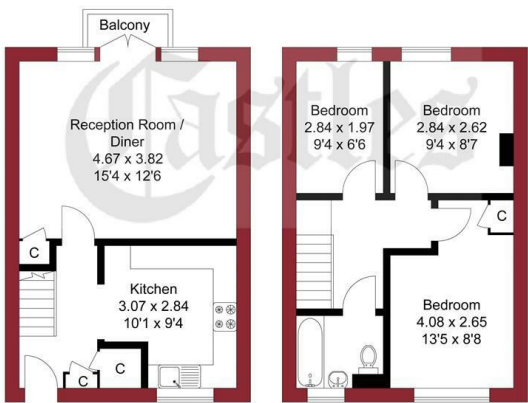


Castles are delighted to present this three bedroom split level flat situated in N18. The property is in good condition and benefits from walking distance to Edmonton Green BR Station, lounge, kitchen, bathroom and plenty of storage space. A great opportunity for investment or a first time buyer. Internal viewing is highly recommended.



438 Hertford Road
Edmonton
London
N9 8AB
020 8804 8123
edmonton@castles.london
www.propertysoftwaregroup.com

APPROXIMATE GROSS INTERNAL AREA
65.75 sqm / 707.72 sqft

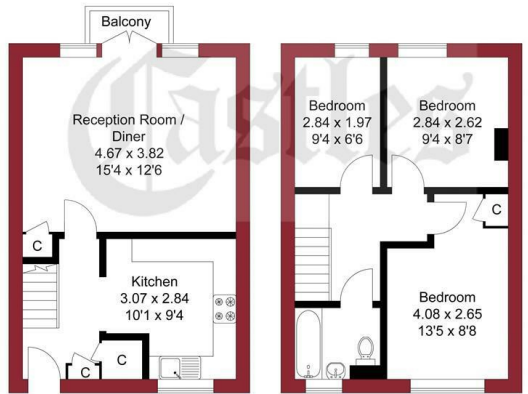


GROUND FLOOR

FIRST FLOOR

THIS PLAN IS FOR ILLUSTRATION ONLY AND MAY NOT BE REPRESENTATIVE OF THE PROPERTY

APPROXIMATE GROSS INTERNAL AREA
65.75 sqm / 707.72 sqft



GROUND FLOOR

FIRST FLOOR

THIS PLAN IS FOR ILLUSTRATION ONLY AND MAY NOT BE REPRESENTATIVE OF THE PROPERTY

