



35a Lees Road, Nottingham - NG3 6GZ

Guide Price **£260,000**





35a Lees Road

Nottingham, Nottingham

3 bed semi-detached home in the sought-after Mapperley - close to excellent amenities! Lounge, kitchen with adjoining dining area, bathroom, generous garden and driveway! Council Tax band: B

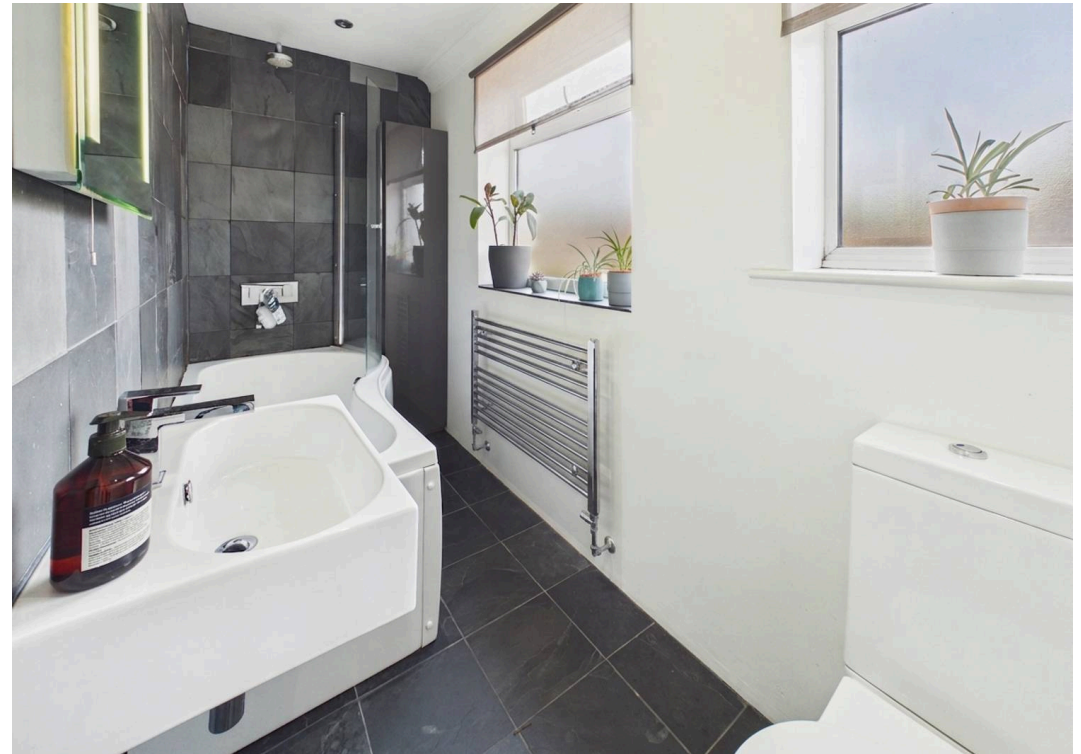
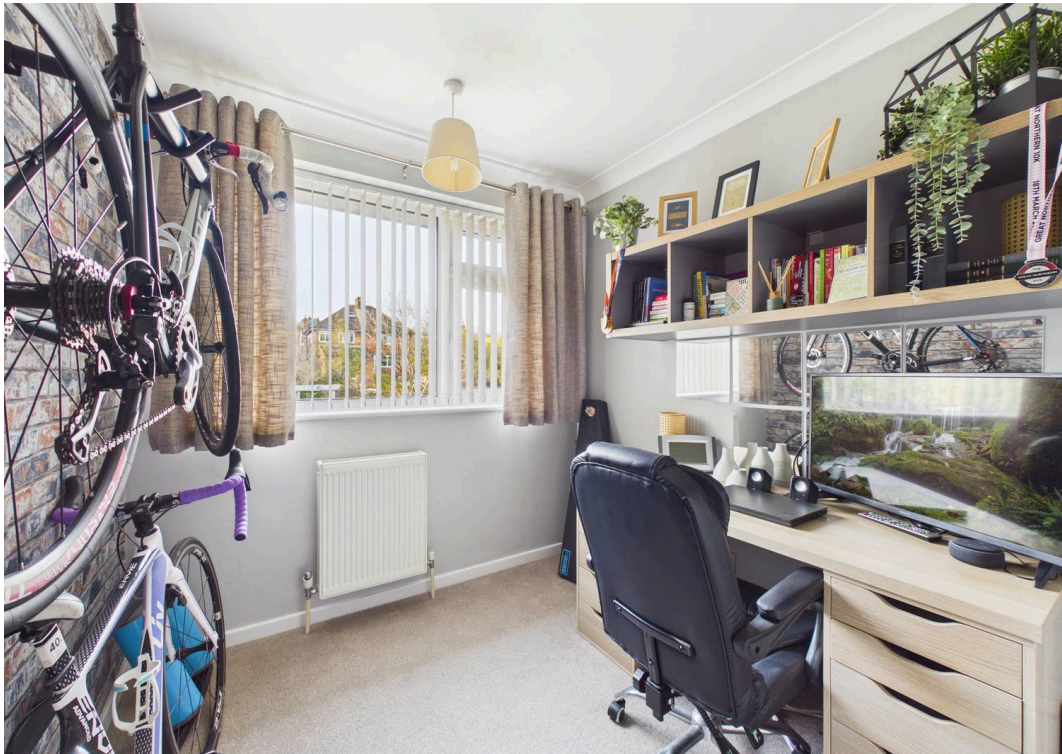
Tenure: Freehold

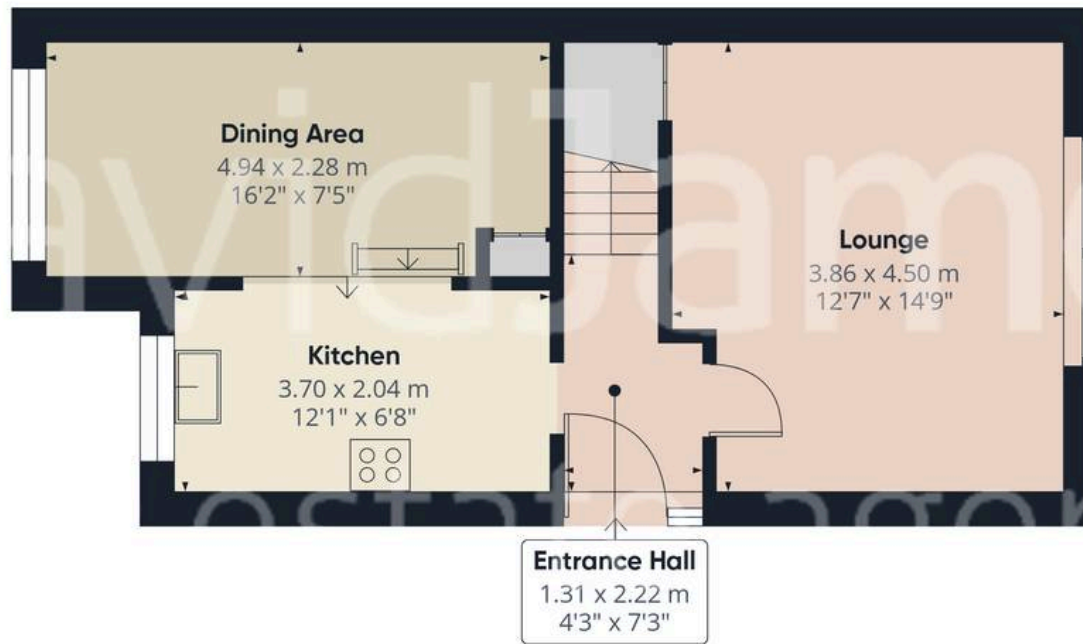
EPC Energy Efficiency Rating: C

EPC Environmental Impact Rating: D

- Well-presented semi-detached home
- Within easy reach of Mapperley's excellent amenities, nearby schools and frequent transport links
- Bright and inviting lounge with sliding patio doors
- Fitted kitchen with a range of units and integrated cooking appliances
- Adjoining open-plan dining area off the kitchen
- Three first floor well-proportioned bedrooms
- Modern family bathroom with a three-piece white suite and feature contrast tiling
- Gas central heating and UPVC double glazing
- Generous lawned rear garden with established planting and a feature pergola seating area
- Driveway providing convenient off-street parking



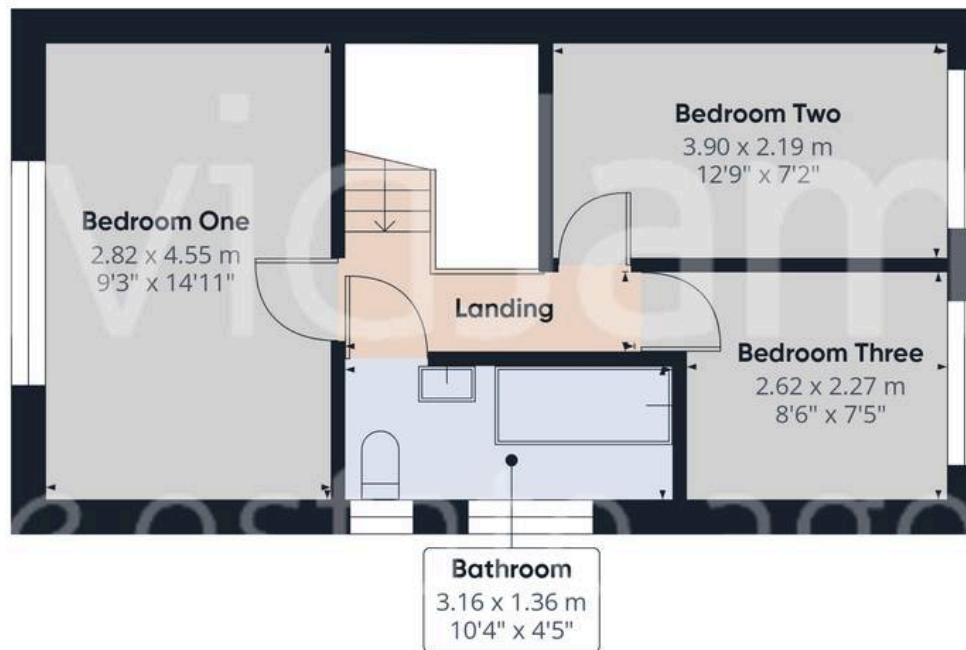




Floor 0

Approximate total area⁽¹⁾

75.7 m²
814 ft²



Floor 1

(1) Excluding balconies and terraces

Calculations reference the RICS IPMS 3C standard. Measurements are approximate and not to scale. This floor plan is intended for illustration only.

GIRAFFE360





David James Estate Agents

David James Estate Agents, 45B Plains Road – NG3 5JU

0115 962 4213 • mapperley@david-james.com • www.david-james.com

These particulars are produced in good faith and are set out as a general guide only. Measurements are approximate and floor plans are for illustrative purposes only. Services have not been tested. We have established professional relationships with third-party suppliers for the provision of services to Clients, details of which can be found on the property listing page on our website.