



FREEHOLD

House - End Terrace

# 55 CHELMSFORD ROAD, LONDON, N14 5PS

Offers Over

# £550,000

## FEATURES

- Chain Free
- 59 ft Garden
- Utility
- Long Garage to Rear
- End of Terrace/Corner Plot
- 0.4 mile to Souhtgate Tube
- Cloakroom
- Off Street Parking



# RASH & RASH

# 2 Bedroom House - End Terrace located in London

\*\* Chain Free \*\* Situated on a quiet residential road, just a short walk from Southgate Tube Station (Piccadilly Line) and Southgate High Street, this beautifully presented end of terrace home is perfect for those seeking modern living with excellent transport and local amenities close by.

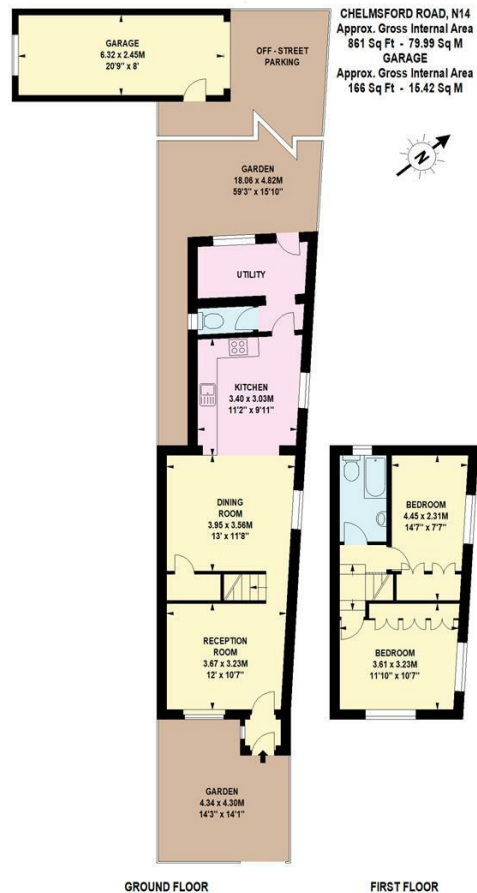
The property offers a welcoming reception room to the front, a bright and spacious open-plan kitchen and dining area, plus the added benefit of a utility room and downstairs cloakroom. The back door opens out onto a generous patio and long rear garden, perfect for entertaining or relaxing. There is also a garage with off-street parking, providing excellent storage or workspace options.

Upstairs, the home features two bedrooms and a modern family bathroom.

This property is ideal for first-time buyers, downsizers, or investors alike. With an expected rental value of around £2,000 per month, it also represents a good investment opportunity.

Located within easy reach of highly regarded local schools, green open spaces, shops, and restaurants, this property is ready to move straight into and enjoy.

An early viewing is highly recommended.



Call us on

**02088822828**

[info@rashandrash.com](mailto:info@rashandrash.com)

<https://www.rashandrash.com/>

**Council Tax Band**

**E**

| Energy Efficiency Rating                           |   | Current                    | Potential |
|--|---|----------------------------|-----------|
| <i>Very energy efficient - lower running costs</i> |   |                            |           |
| (92 plus)  | A |                            |           |
| (81-91)  | B |                            |           |
| (69-80)  | C |                            | 76        |
| (55-68)  | D | 59                         |           |
| (39-54)  | E |                            |           |
| (21-38)  | F |                            |           |
| (1-20)   | G |                            |           |
| <i>Not energy efficient - higher running costs</i> |   |                            |           |
| <b>England &amp; Wales</b>                         |   | EU Directive<br>2002/91/EC |           |

Agents Note: Whilst every care has been taken to prepare these particulars, they are for guidance purposes only. All measurements are approximate and are for general guidance purposes only and whilst every care has been taken to ensure their accuracy, they should not be relied upon and potential buyers are advised to recheck the measurements.

**RASH & RASH**