


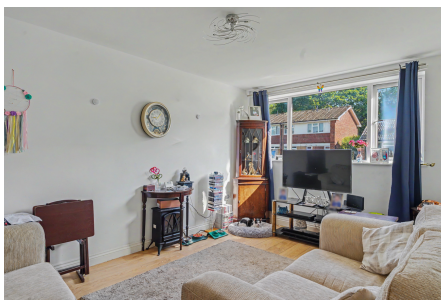


Wildmoor Road, Shirley, Solihull, B90 3PU

Offers Over £240,000

 3  1  1



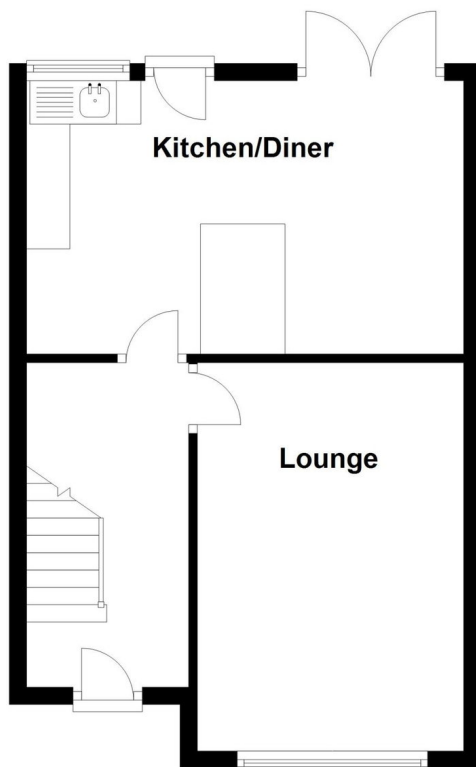
A Three Bedroom Mid-Terrace Home in Prime Shirley Location – No Upward Chain

Key Features

- Three bedroom mid-terrace property
- Living room to front aspect
- Spacious dining kitchen overlooking the garden
- Two double bedrooms and one good size single
- Family bathroom
- Rear garden
- Excellent location near Shirley High Street and shops
- Close to transport links and local schools
- Ideal for first-time buyers or investors
- No upward chain

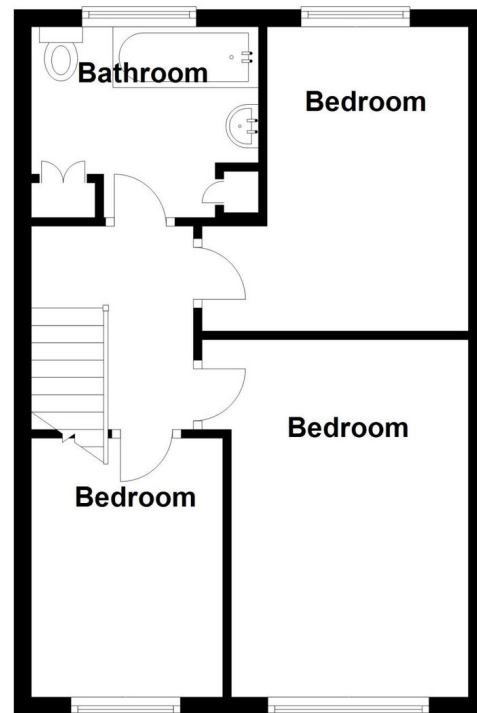
Ground Floor

Approx. 37.6 sq. metres (404.4 sq. feet)



First Floor

Approx. 39.0 sq. metres (420.0 sq. feet)



Total area: approx. 76.6 sq. metres (824.4 sq. feet)