



Connells

Wathen Road
WARWICK



Property Description

A charming two bedroom home with a driveway to the front, a garage with power and light and a low maintenance rear garden. This lovely home has a lounge to the front featuring a fireplace perfect for cosy evenings. There is an extended kitchen diner with good storage and work top space for food preparation to the rear. On the first floor, there are two light and airy double bedrooms and a recently modernised family bathroom.

Wathen Road is a 15 minute walk into the historic Warwick town centre and its famous Warwick Castle. Warwick is a market town which offers a great selection of High Street & independent shops as well as a wide range of restaurants, bars and coffee shops. Warwick is a lively town which hosts an annual food and drink festival, weekend markets and other local events. Wathen Road is also a short walk over to Priory Park, perfect for scenic walks.

The location is perfect for travel links as it is a short drive to the M40 and Warwick Parkway park and only a short 15 minute walk to Warwick train station. It is also a 15 minute walk to Warwick hospital and is right next to St Michaels hospital, perfect for health care professionals looking for a short commute. There is also access to good schooling.

Entrance Hall

Tiled flooring.

Lounge

15' 2" x 10' 9" (4.62m x 3.28m)

Window to front, fireplace, store cupboard and carpeted flooring.

Kitchen Diner

17' 6" x 13' 10" (5.33m x 4.22m)

Fitted with a range of wall and base units with work surface over, space for fridge freezer, washing machine and dishwasher. Built in oven, Rangemaster electric hob and extractor fan. Tiled flooring, two windows to side and French door to rear.

Bedroom One

17' 10" x 10' 3" (5.44m x 3.12m)

Window to front and wooden flooring.

Bedroom Two

11' 10" x 10' (3.61m x 3.05m)

Window to rear and wooden flooring.

Family Bathroom

A recently updated bathroom with a rainfall shower over bath and surrounded with stylish low maintenance panels. There is a low level flush WC, wash hand basin with storage, new extractor fan, fully tiled floor and walls and window to side.

Rear Garden

Enclosed rear garden with patio area and outbuilding.

Parking

Driveway to the front of the home.

Garage

New up and over garage door with power and overhead lighting. Storage and shelving.

Vendor Notes

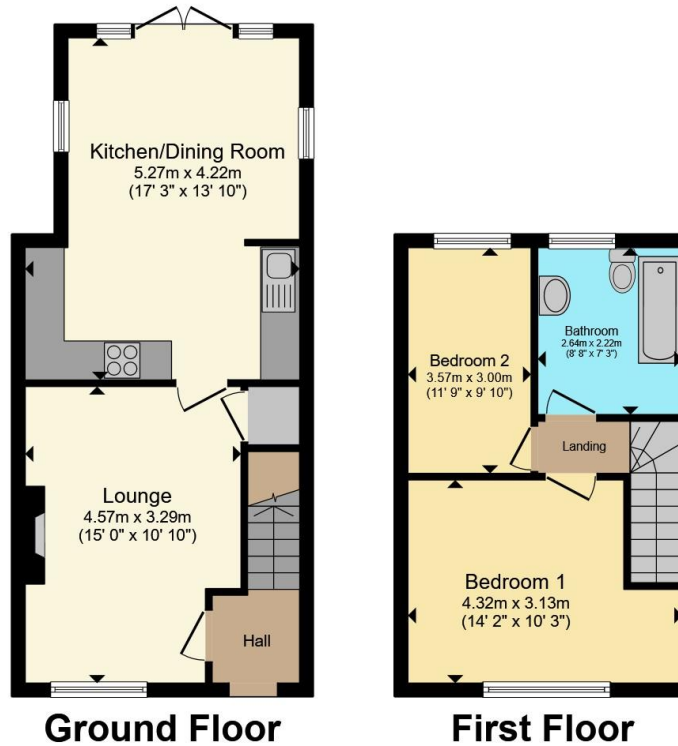
Roof was newly insulated in 2025.

2016 Baxi Duo-tec Combi boiler serviced annually.









Total floor area 68.1 m² (733 sq.ft.) approx

This floor plan is for illustrative purposes only. It is not drawn to scale. Any measurements, floor areas (including any total floor area), openings and orientation are approximate. No details are guaranteed, they cannot be relied upon for any purpose and they do not form part of any agreement. No liability is taken for any error, omission or misstatement. A party must rely upon its own inspection(s). Powered by www.propertybox.io



To view this property please contact Connells on

T 01926 403308
E warwick@connells.co.uk

14 High Street
 WARWICK CV34 4AP

EPC Rating: D Council Tax Band: B

Tenure: Freehold

view this property online connells.co.uk/Property/WAR107556



1. MONEY LAUNDERING REGULATIONS Intending purchasers will be asked to produce identification documentation at a later stage and we would ask for your co-operation in order that there will be no delay in agreeing the sale. 2. These particulars do not constitute part or all of an offer or contract. 3. The measurements indicated are supplied for guidance only and as such must be considered incorrect. Potential buyers are advised to recheck measurements before committing to any expense. 4. We have not tested any apparatus, equipment, fixtures, fittings or services and it is in the buyers interest to check the working condition of any appliances.

Connells Residential is registered in England and Wales under company number 1489613, Registered Office is Cumbria House, 16-20 Hockliffe Street, Leighton Buzzard, Bedfordshire, LU7 1GN. VAT Registration Number is 500 2481 05.

See all our properties at www.connells.co.uk | www.rightmove.co.uk | www.zoopla.co.uk

Property Ref: WAR107556 - 0005