



DAVID WILSON HOMES

WHERE QUALITY LIVES

WIGSTON
MEADOWS
North



dwh.co.uk



GIVING NATURE A HOME

BUILDING SUSTAINABLE COMMUNITIES



Throughout the planning process before starting build, we consider where we can introduce nature and where we can strengthen it. At David Wilson Homes we have a vision that goes beyond bricks and mortar. We aim to create inspiring communities of tomorrow that fulfil our customers' every need whilst respecting today's environment.

Our homes are thoughtfully designed and built to the highest quality, whilst the design and layout of our developments create a true sense of place. But our homes are not only great places to live; they are good for the environment and good for future generations too.



Bird boxes

installed in
open spaces



Swift bricks

on selected
plots



Pond & Play

area for the
community



Hedgehog highways

throughout
the development



Bat boxes

in the
surrounding area



DAVID WILSON HOMES
WHERE QUALITY LIVES

ENERGY-EFFICIENT HOMES

THE FEATURES AND BENEFITS



Save thousands per year on your energy bills with a brand-new energy-efficient home. Every new home we build has been designed with the future in mind. We use innovative design and smart technologies to make your new home more economical, comfortable and enjoyable to live in.

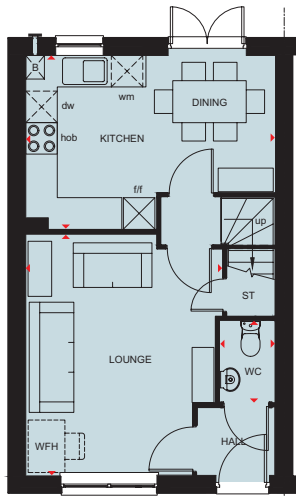
Our homes at Wigston Meadows North will benefit from these energy saving features.



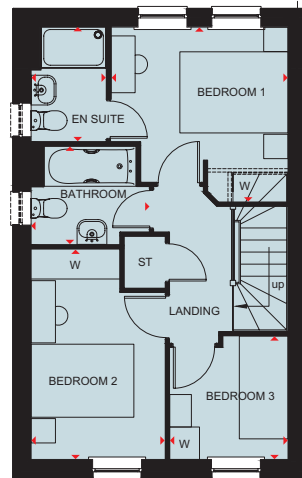
DAVID WILSON HOMES
WHERE QUALITY LIVES

THE ARCHFORD

THREE BEDROOM HOME



Ground Floor		
Lounge	4599 x 3746 mm	15'1" x 12'3"
Kitchen/Dining	4745 x 3310 mm	15'7" x 10'10"
WC	1561 x 1054 mm	5'1" x 3'5"



First Floor		
Bedroom 1	3277 x 3229 mm	10'9" x 10'7"
En suite	2119 x 1385 mm	6'11" x 4'7"
Bedroom 2	3887 x 2475 mm	12'9" x 8'11"
Bedroom 3	2281 x 2186 mm	7'6" x 7'2"
Bathroom	2181 x 1815 mm	7'2" x 5'11"

Key

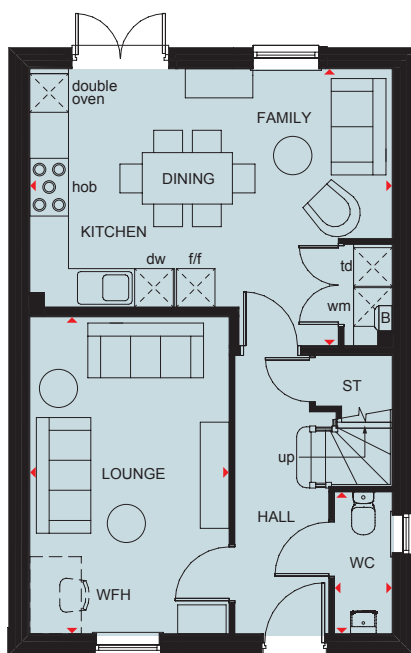
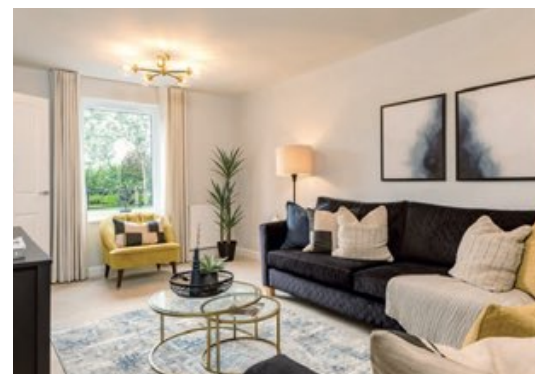
B Boiler	wm Washing machine space	dw Dishwasher space	W Wardrobe space
ST Store	f/f Fridge/freezer space	WFH Working from home space	◀▶ Dimension location



DAVID WILSON HOMES
WHERE QUALITY LIVES

THE BARDON

THREE BEDROOM HOME

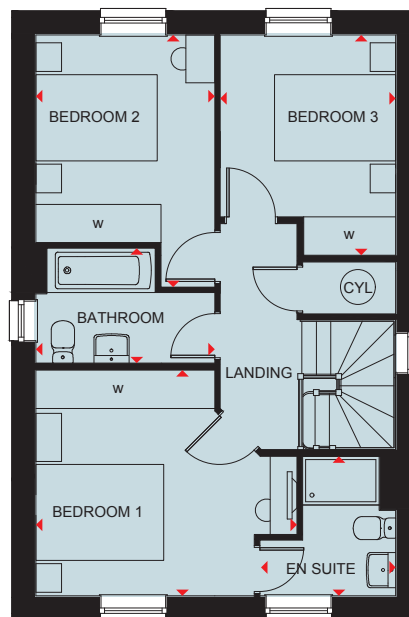


Ground Floor

Lounge	4930 x 3100 mm	16'2" x 10'2"
Kitchen/ Family/Dining	5685 x 4305 mm	18'7" x 14'1"
WC	2206 x 900 mm	7'3" x 2'11"

Key

B Boiler	f/f Fridge/freezer space	dw Dishwasher space	CYL Cylinder	w Wardrobe space
ST Store	wm Washing machine space	td Tumble dryer space	WFH Working from home space	◀▶ Dimension location



First Floor

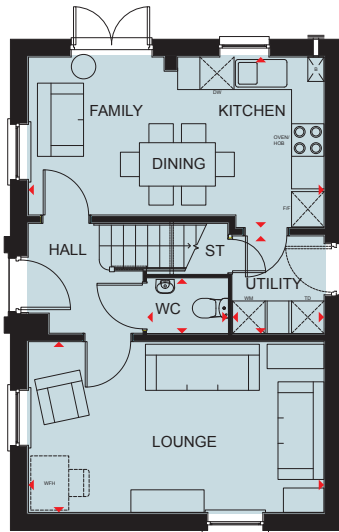
Bedroom 1	4087 x 3537 mm	13'4" x 11'6"
En suite	2186 x 2126 mm	7'2" x 6'10"
Bedroom 2	3947 x 2813 mm	12'9" x 9'2"
Bedroom 3	3448 x 2747 mm	11'3" x 9'0"
Bathroom	2800 x 1800 mm	9'2" x 5'9"



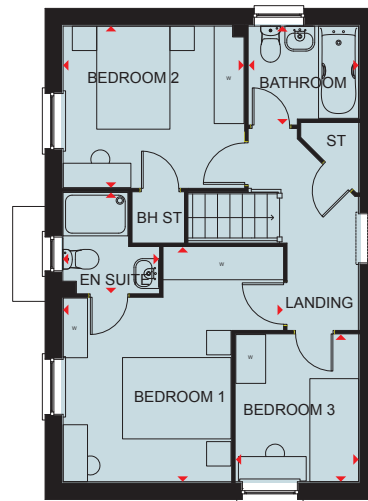
DAVID WILSON HOMES
WHERE QUALITY LIVES

THE HADLEY

THREE BEDROOM END OR DETACHED HOME



* Optional door please refer to sales advisor



* Optional window please refer to sales advisor

Ground Floor

Lounge	5450 x 3148 mm	17'11" x 10'4"
Kitchen/Family/Dining	5450 x 3143 mm	17'11" x 10'4"
Utility	1799 x 1688 mm	5'11" x 5'6"
WC	1480 x 1014 mm	4'10" x 3'4"

First Floor

Bedroom 1	4324 x 4053 mm	14'2" x 13'3"
En Suite	1856 x 1771 mm	6'1" x 5'9"
Bedroom 2	3336 x 2978 mm	11'3" x 9'9"
Bedroom 3	2713 x 2265 mm	8'11" x 7'5"
Bathroom	2025 x 1811 mm	6'8" x 6'0"

Key

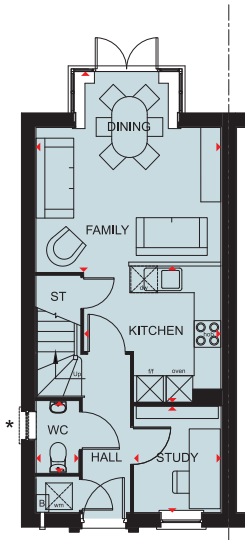
B	Boiler	wm	Washing machine space	dw	Dishwasher space	W	Wardrobe space	◀▶	Dimension location
ST	Store	f/f	Fridge/freezer space	TD	Tumble dryer	WFH	Working from home space		



DAVID WILSON HOMES
WHERE QUALITY LIVES

THE CANNINGTON

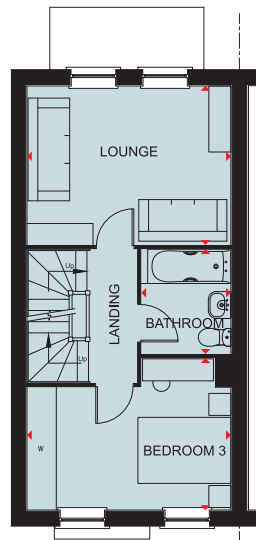
THREE BEDROOM HOME



Ground Floor

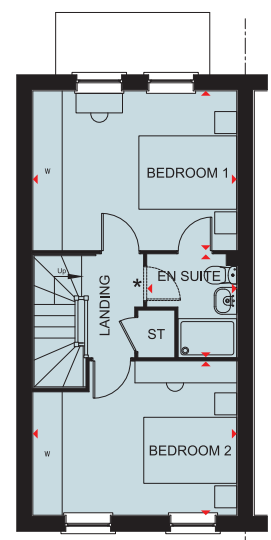
Family/Dining	4513 x 4162 mm	14'10" x 13'8"
Kitchen	3076 x 3070 mm	10'1" x 10'1"
Study	2394 x 1959 mm	7'10" x 6'5"
WC	1614 x 961 mm	5'4" x 3'2"

*Window to WC included where plotting conditions allow



First Floor

Lounge	4168 x 3249 mm	13'8" x 10'8"
Bedroom 3	4168 x 3104 mm	13'8" x 10'2"
Bathroom	2139 x 1831 mm	7'0" x 6'0"



Second Floor

Bedroom 1	4168 x 3249 mm	13'8" x 10'8"
En suite	2101 x 1828 mm	6'11" x 6'0"
Bedroom 2	4168 x 3137 mm	13'8" x 10'4"

*Optional door to en suite

Key

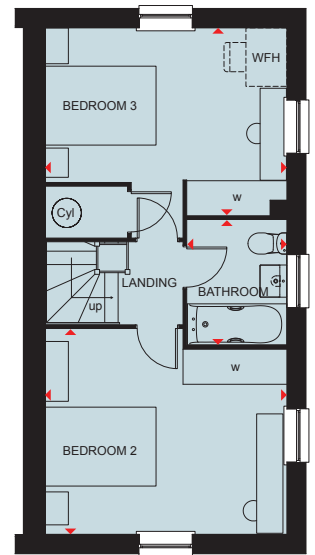
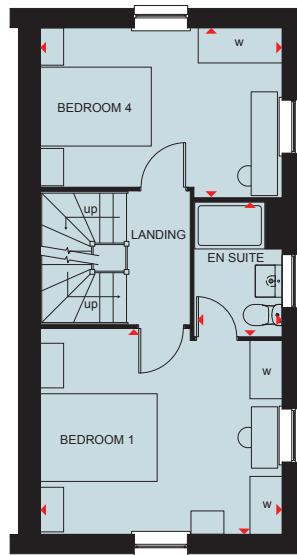
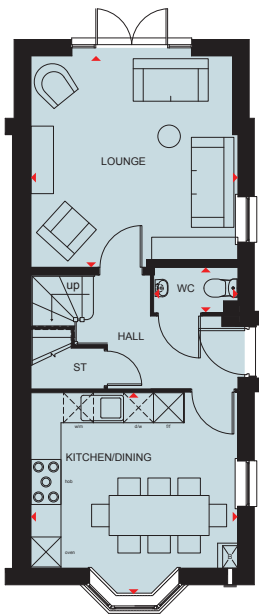
B	Boiler	wm	Washing machine space	f/f	Fridge/freezer space	◀▶	Dimension location
ST	Store	dw	Dishwasher space	W	Wardrobe space		



DAVID WILSON HOMES
WHERE QUALITY LIVES

THE PARKIN

FOUR BEDROOM HOME



Ground Floor

Lounge	4138 x 4227 mm	13'7" x 13'10"
Kitchen/Dining	4133 x 4028 mm	13'7" x 13'3"
W.C.	1673 x 896 mm	5'6" x 2'11"

First Floor

Bedroom 1	4138 x 3508 mm	13'7" x 11'6"
En suite	1508 x 2290 mm	4'9" x 7'5"
Bedroom 4	4138 x 2893 mm	13'7" x 9'6"

Second Floor

Bedroom 2	4138 x 3508 mm	13'7" x 11'6"
Bedroom 3	4138 x 3202 mm	13'7" x 10'6"
Bathroom	1695 x 2131 mm	5'7" x 7'0"

Key

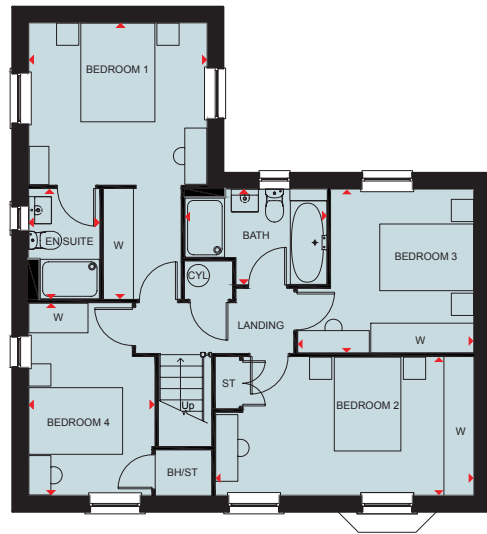
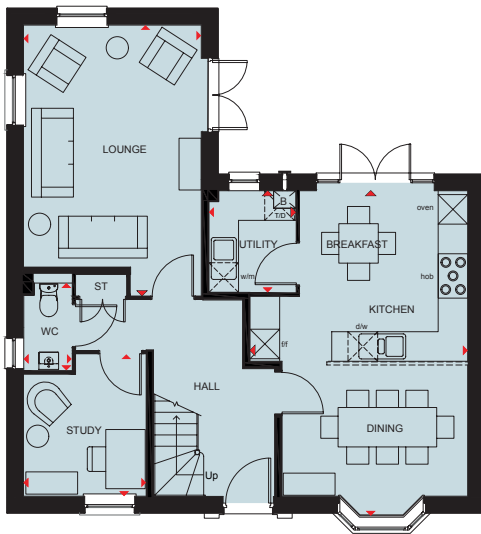
B	Boiler	wm	Washing machine space	f/f	Fridge freezer space	WFH	Working from home space	◀▶	Dimension location
ST	Store	dw	Dishwasher space	td	Tumble dryer space	W	Wardrobe space		



DAVID WILSON HOMES
WHERE QUALITY LIVES

THE AVONDALE

FOUR BEDROOM HOME



Ground Floor

Lounge	5488 x 3605 mm	18'0" x 11'10"
Kitchen/Breakfast/Dining	6590 x 4415 mm	21'7" x 14'6"
Utility	2060 x 1761 mm	6'9" x 5'9"
Study	2878 x 2488 mm	9'5" x 8'2"
WC	1768 x 975 mm	5'10" x 3'2"

First Floor

Bedroom 1	5585 x 3605 mm	18'3" x 11'10"
Ensuite	2222 x 1433 mm	7'3" x 4'8"
Bedroom 2	5225 x 2792 mm	17'1" x 9'2"
Bedroom 3	3563 x 3308 mm	11'8" x 10'10"
Bedroom 4	3853 x 2547 mm	12'7" x 8'4"
Bathroom	2871 x 1927 mm	9'5" x 6'4"

Key

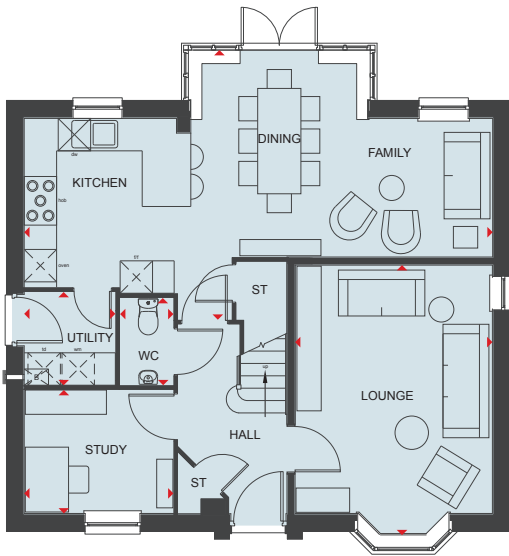
B	Boiler	f/f	Fridge/freezer space	wm	Washing machine space	W	Wardrobe space
ST	Store	dw	Dishwasher space	td	Tumble dryer space	◀▶	Dimension location



DAVID WILSON HOMES
WHERE QUALITY LIVES

THE BRADGATE

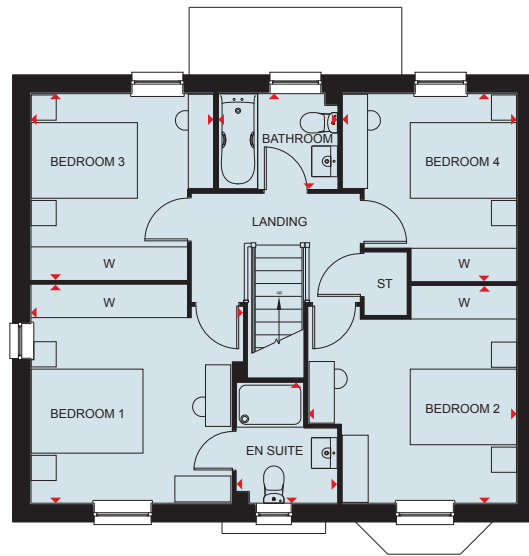
FOUR BEDROOM DETACHED HOME



Ground Floor

Lounge	4994 x 3653 mm	16'5" x 12'0"
Kitchen/Dining/Family	8673 x 4992 mm	28'5" x 16'5"
Study	2762 x 2285 mm	9'1" x 7'6"
Utility	1688 x 1725 mm	5'6" x 5'8"
WC	1614 x 987 mm	5'4" x 3'3"

* Window may not be available on certain plots. Speak to Sales Adviser for details on individual plans



First Floor

Bedroom 1	3901 x 3786 mm	12'10" x 12'5"
En Suite	2157 x 1820 mm	7'1" x 6'0"
Bedroom 2	3720 x 3876 mm	12'2" x 12'9"
Bedroom 3	3324 x 3259 mm	10'11" x 10'8"
Bedroom 4	3349 x 3113 mm	11'0" x 10'3"
Bathroom	2125 x 1700 mm	7'0" x 5'7"

Key

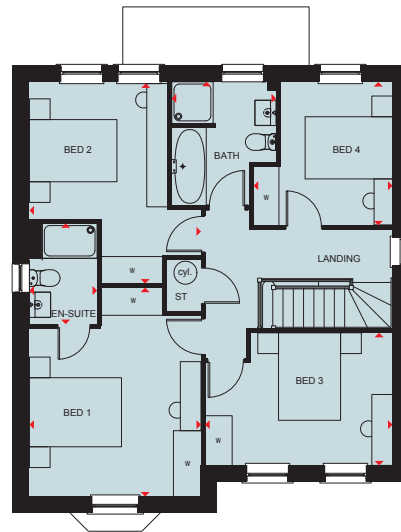
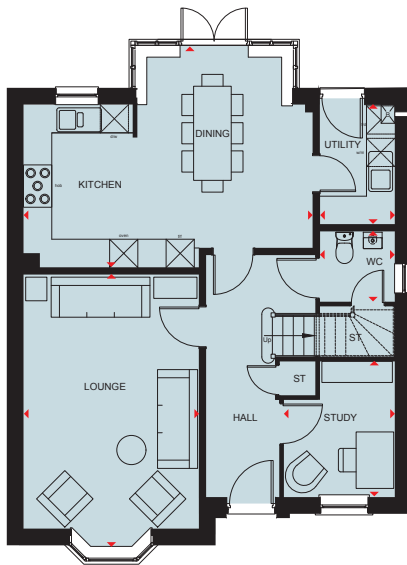
B	Boiler	dw	Dishwasher space	wm	Washing machine space	W	Wardrobe space
ST	Store	f/f	Fridge/freezer space	td	Tumble dryer space	↔	Dimension location



DAVID WILSON HOMES
WHERE QUALITY LIVES

THE HOLDEN

FOUR BEDROOM DETACHED HOME



Ground Floor

Lounge	5797 x 3723 mm	19'0" x 12'2"
Kitchen/dining	6142 x 4685 mm	20'2" x 15'4"
Study	2881 x 2361 mm	9'5" x 7'7"
Utility	2545 x 1588 mm	8'3" x 5'2"
WC	1498 x 1588 mm	4'9" x 5'2"

First Floor

Bedroom 1	4538 x 3728 mm	14'9" x 12'2"
En suite	2190 x 1471 mm	7'2" x 4'8"
Bedroom 2	4379 x 3728 mm	14'4" x 12'2"
Bedroom 3	4073 x 2881 mm	13'4" x 9'5"
Bedroom 4	3115 x 3043 mm	10'2" x 9'10"
Bathroom	2673 x 2249 mm	8'8" x 7'4"

Key

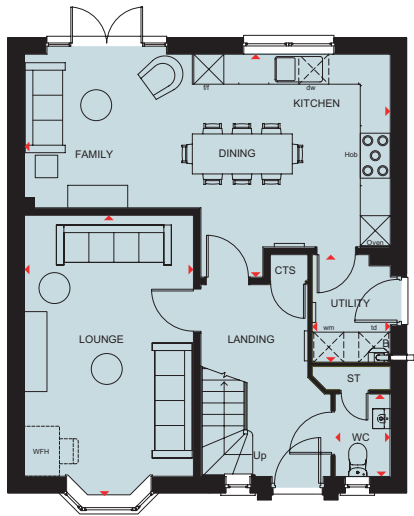
B	Boiler	W	Wardrobe space	wm	Washing machine space	CYL	Cylinder	↔	Dimension location
ST	Store	f/f	Fridge/freezer space	dw	Dishwasher space	td	Tumble dryer		



DAVID WILSON HOMES
WHERE QUALITY LIVES

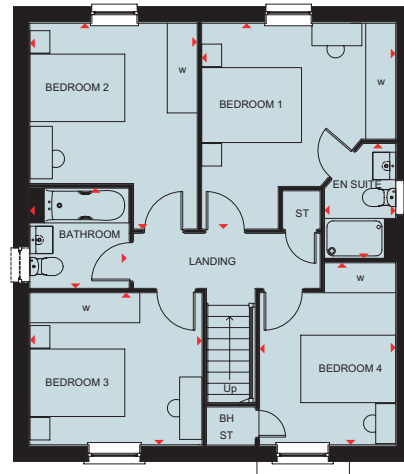
THE KIRKDALE

FOUR BEDROOM DETACHED HOME



Ground Floor

Lounge	3380 x 5617 mm	11'1" x 18'5"
Kitchen/Family/Dining	7318 x 4460 mm	24'0" x 14'8"
Utility	1561 x 2150 mm	5'1" x 7'1"
WC	1095 x 1650 mm	3'7" x 5'5"



First Floor

Bedroom 1	3885 x 4119 mm	12'9" x 13'6"
En suite	1425 x 2300 mm	4'8" x 7'7"
Bedroom 2	3350 x 4119 mm	11'0" x 13'6"
Bedroom 3	3447 x 3043 mm	11'4" x 10'0"
Bedroom 4	2725 x 3643 mm	8'11" x 12'0"
Bathroom	1987 x 2010 mm	6'6" x 6'7"

Key

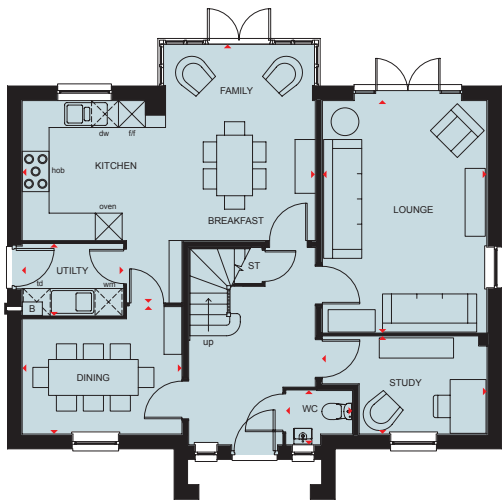
B Boiler	BH ST Bulkhead Store	dw Dishwasher space	td Tumble dryer space	W Wardrobe space
ST Store	wm Washing machine space	f/f Fridge freezer space	Wfh Working from home space	◀▶ Dimension location



DAVID WILSON HOMES
WHERE QUALITY LIVES

THE WINSTONE

FOUR BEDROOM DETACHED HOME



Ground Floor

Lounge	5171 x 3665 mm	16'11" x 12'0"
Kitchen/Family/Breakfast	6535 x 5758 mm	21'5" x 18'11"
Dining	3563 x 2846 mm	11'8" x 9'4"
Study	3670 x 2175 mm	12'0" x 7'2"
Utility	2250 x 1591 mm	7'4" x 5'3"
WC	1470 x 1210 mm	4'10" x 4'0"

* Window may be omitted on certain plots.
Speak to a Sales Adviser for details on individual plans.

First Floor

Bedroom 1	5164 x 3624 mm	16'11" x 11'10"
Dressing	3155 x 2265 mm	10'4" x 7'5"
En suite 1	2615 x 2182 mm	8'7" x 7'2"
Bedroom 2	3722 x 3218 mm	12'2" x 10'7"
En suite 2	2710 x 1178 mm	8'11" x 3'10"
Bedroom 3	3363 x 2940 mm	11'1" x 9'8"
Bedroom 4	3623 x 3283 mm	11'10" x 10'9"
Bathroom	3014 x 2182 mm	9'10" x 7'2"

* Window may be omitted on certain plots.
Speak to a Sales Adviser for details on individual plans.

Key

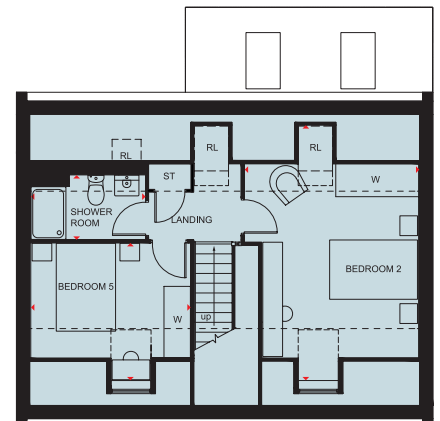
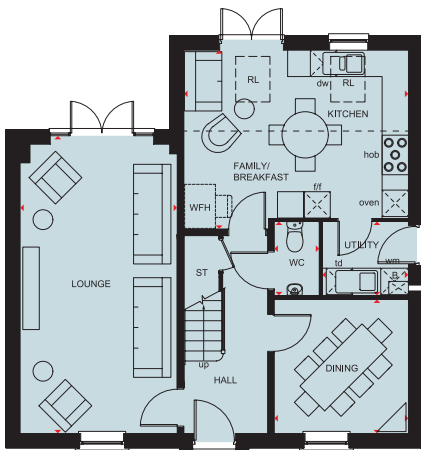
B	Boiler	wm	Washing machine space	f/f	Fridge freezer space	W	Wardrobe space
ST	Store	dw	Dishwasher space	td	Tumble dryer space	◀▶	Dimension location



DAVID WILSON HOMES
WHERE QUALITY LIVES

THE EMERSON

FIVE BEDROOM HOME



Ground Floor

Lounge	6575 x 3568 mm	21'7" x 11'8"
Kitchen/Family/Breakfast	5102 x 4067 mm	16'9" x 13'4"
Utility	1950 x 1613 mm	6'4" x 5'4"
Dining	3084 x 3052 mm	10'1" x 10'0"
WC	1613 x 1013 mm	5'4" x 3'4"

First Floor

Bedroom 1	3926 x 3574 mm	12'10" x 11'8"
Dressing	2560 x 2055 mm	8'4" x 6'8"
En Suite	2560 x 1435 mm	8'4" x 4'8"
Bedroom 3	3418 x 3077 mm	11'2" x 10'1"
Bedroom 4	3077 x 3063 mm	10'1" x 10'0"
Bathroom	2142 x 1991 mm	7'0" x 6'6"

Second Floor

Bedroom 2	5783* x 3962 mm	19'0"* x 13'0"
Bedroom 5	3634 x 3082* mm	11'11" x 10'11"*
Shower Room	2606 x 1738* mm	8'6" x 5'7"*

*Overall floor dimensions includes lowered ceiling areas

Key

B	Boiler	wm	Washing machine space	f/f	Fridge freezer space	WFH	Working from home space	◀▶	Dimension Location
ST	Store	dw	Dishwasher space	td	Tumble dryer space	W	Wardrobe space		



DAVID WILSON HOMES
WHERE QUALITY LIVES

THE HENLEY

FIVE BEDROOM HOME



Ground Floor

Kitchen/Breakfast/Family	6595 x 5405 mm	21'8" x 17'7"
Utility	2440 x 2143 mm	8'0" x 7'0"
Dining	4340 x 3218 mm	14'3" x 10'7"
WC	2341 x 1595 mm	7'8" x 5'3"
Lounge	7040 x 4300 mm	23'1" x 14'1"



First Floor

Bedroom 1	6689 x 4388 mm	21'11" x 14'5"
En Suite 1	2608 x 1394 mm	8'7" x 4'7"
Bedroom 2	3918 x 3284 mm	12'10" x 10'9"
En Suite 2	2608 x 1375 mm	8'7" x 4'6"
Bedroom 3	3733 x 3105 mm	12'3" x 10'2"
Bedroom 4	3445 x 3209 mm	11'4" x 10'6"
Bedroom 5/Study	2847 x 2353 mm	9'4" x 7'9"
Bathroom	3027 x 2346 mm	9'11" x 7'8"

Key

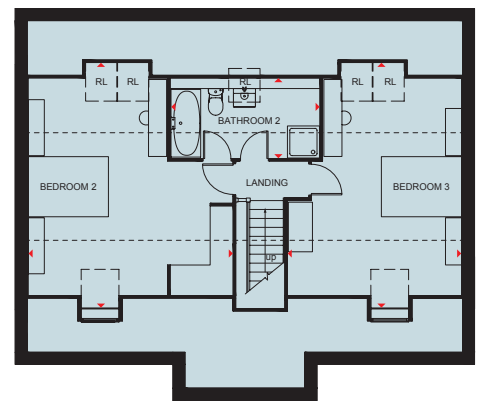
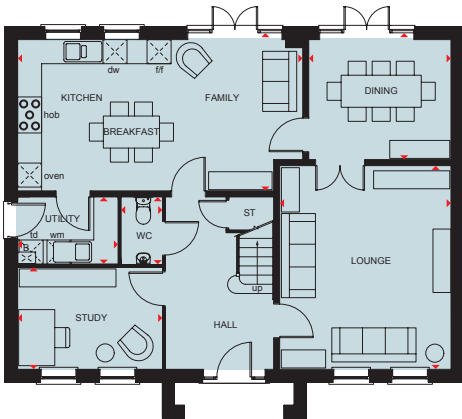
B	Boiler	wm	Washing machine space	f/f	Fridge freezer space	W	Wardrobe space
ST	Store	dw	Dishwasher space	td	Tumble dryer space	◀▶	Dimension location



DAVID WILSON HOMES
WHERE QUALITY LIVES

THE LICHFIELD

FIVE BEDROOM HOME



Ground Floor

Lounge	5084 x 4275 mm	16'8" x 14'0"
Kitchen/Family/Breakfast	7115 x 3775 mm	23'4" x 12'4"
Dining	3550 x 2994 mm	11'7" x 9'9"
Utility	2500 x 1675 mm	8'2" x 5'6"
Study	3605 x 2539 mm	11'9" x 8'4"
WC	1675 x 1016 mm	5'6" x 3'4"

First Floor

Bedroom 1	5084 x 4275 mm	16'8" x 14'0"
Dressing	2994 x 2249 mm	9'10" x 7'5"
En Suite	2994 x 2500 mm	9'10" x 8'2"
Bedroom 4	4303 x 3848 mm	14'1" x 12'8"
Bedroom 5	4450 x 3511 mm	14'7" x 11'6"
Bathroom 1	3576 x 2013 mm	11'7" x 6'6"

Second Floor

Bedroom 2	6345 x 5102* mm	20'8" x 16'8"*
Bedroom 3	6345 x 4336* mm	20'8" x 14'3"*
Bathroom 2	3715* x 1733 mm	12'2"* x 5'8"

*Overall floor dimension includes lowered ceiling areas

Key

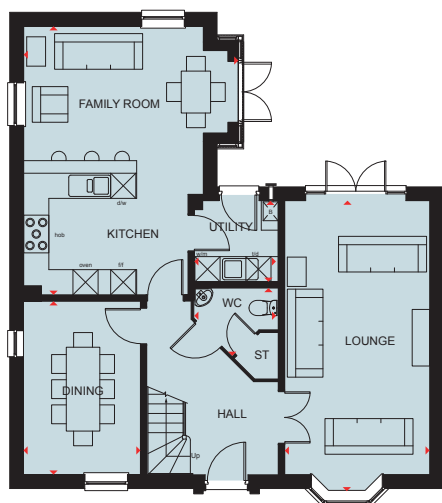
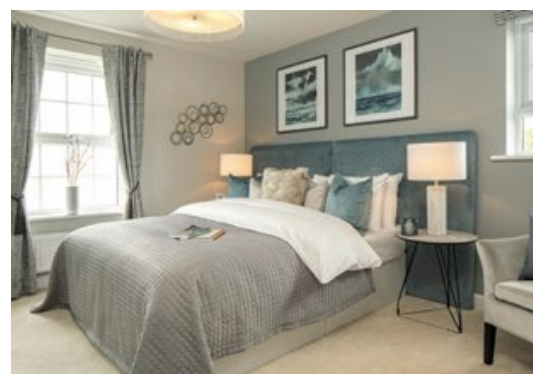
B	Boiler	CYL	Cylinder	wm	Washing machine space	td	Tumble dryer space	↔	Dimension location
ST	Store	f/f	Fridge/freezer space	dw	Dishwasher space	RL	Roof light		



DAVID WILSON HOMES
WHERE QUALITY LIVES

THE MORETON

FIVE BEDROOM HOME



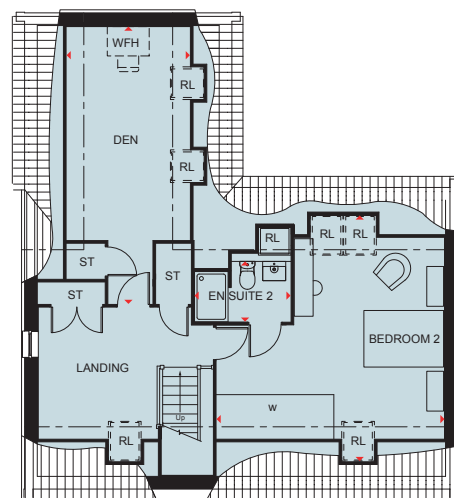
Ground Floor

Lounge	6932 x 3507 mm	22'9" x 11'6"
Kitchen/Family	6406 x 5120 mm	21'0" x 16'10"
Dining	4144 x 2780 mm	13'7" x 9'2"
Utility	1948 x 1935 mm	6'5" x 6'4"
WC	1953 x 1617 mm	6'5" x 5'4"



First Floor

Bedroom 1	6441 x 4280 mm	21'1" x 14'1"
Ensuite 1	2526 x 2225 mm	8'3" x 7'3"
Bedroom 3	4777 x 2852 mm	9'4" x 13'0"
Bedroom 4	3754 x 2700 mm	12'4" x 8'11"
Bedroom 5	3741 x 2799 mm	12'3" x 9'2"
Bathroom	2682 x 2125 mm	8'9" x 6'11"



Second Floor

Bedroom 2	5858* x 5438 mm	19'2"* x 17'10"
Den	6616 x 2941* mm	21'8" x 9'8"*
En Suite 2	2291 x 1438* mm	7'6" x 4'8"*

* Overall floor dimension includes lowered ceiling areas

Key

B Boiler	wm Washing machine space	f/f Fridge freezer space	WFH Working from home space	BH/ST Bulkhead Store	◀▶ Dimension location
ST Store	dw Dishwasher space	td Tumble dryer space	BH Bulkhead	W Wardrobe space	RL Rooflight



DAVID WILSON HOMES
WHERE QUALITY LIVES

MOVEMAKER

Take the hassle out of selling your existing home.
We could get you moving to a brand new David Wilson home in just 5 simple steps.

1

FIND YOUR HOME

Discover your ideal new home at your chosen development and complete a Movemaker application.

2

VALUE YOUR EXISTING PROPERTY

We will instruct two estate agents who will arrange independent valuations of your current property.

3

AGREE THE SELLING PRICE

Once a price is agreed the Movemaker agreement can then be completed and the estate agent will begin to market your property.

4

FIND A BUYER

The estate agent will help to complete the sale smoothly and efficiently. Remember, we will cover their fees then manage the sale for you.

5

MOVING DAY

Now you can move into your dream David Wilson home, saving money and hassle.

Offer available on selected plots only, terms and conditions apply. Speak to one of our sales advisers now or visit our website. Following withdrawal or termination of any offer, we reserve the right to extend, reintroduce or amend any such offer as we see fit at any time. Purchasers must sign a Movemaker Agreement with us. Offer is subject to use of a David Wilson Homes nominated estate agent to market and sell your existing home. David Wilson Homes will pay the nominated estate agent's fees provided you go on to buy a new David Wilson home.

PART EXCHANGE

If you're keen to move quickly our Part Exchange scheme might be just what you need. We could buy your current home from you, giving you peace of mind that you have a guaranteed buyer.



1

Get in touch

Book an appointment at a development near you.



2

Choose your home

We'll then arrange two independent valuations of your current property.



3

We'll make you an offer

We'll agree a selling price at fair value for your home - based on a presumed sale within eight to ten weeks.



4

We'll buy your home

Once you accept our formal offer, we'll buy your current home and take it in Part Exchange.



5

Time to get moving

You'll be free to move into your brand new home.

KEY WORKER DEPOSIT CONTRIBUTION SCHEME

To show our appreciation for key workers, we are offering a contribution towards your deposit.

When you purchase a David Wilson home using the scheme, we could contribute **£1,000 towards your deposit** for every £20,000 spent on the purchase price and we'll include flooring.



If you're an eligible **key worker**, we could contribute to your deposit



£1,000 for every £20,000 you spend



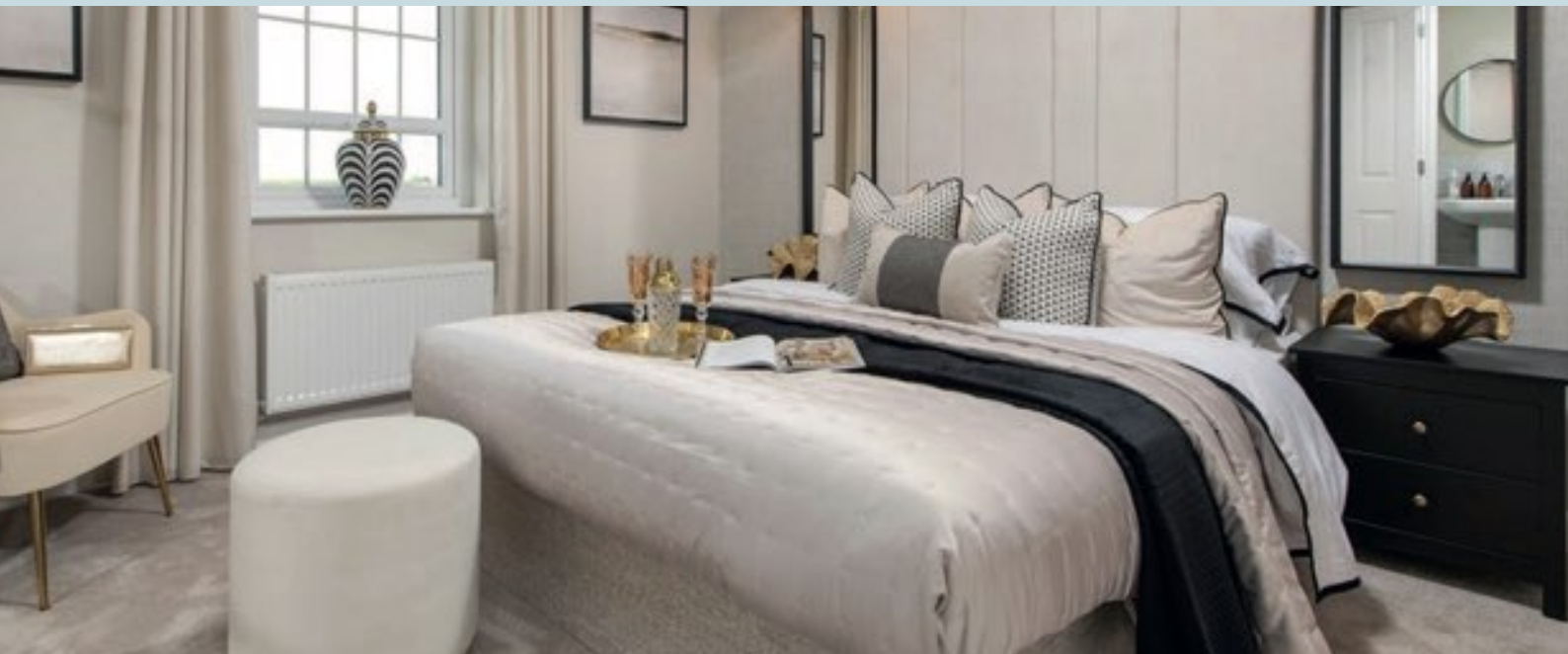
It's our way of saying **thank you** for the vital work you do



Get on touch today



NHS	EDUCATION	POLICE FORCE	FIRE SERVICE
MINISTRY OF DEFENCE	RNLI	FOSTER CARERS	ENVIRONMENTAL SERVICE
NATIONAL HIGHWAYS	PROBATION SERVICE	LOCAL AUTHORITY	PRISON SERVICE



NEW HOMES QUALITY CODE

Housebuilders and developers who build new homes will be expected to register with the New Homes Quality Board (NHQB). As long as a housebuilder or developer has followed the correct registration process, including completing the necessary training, introducing a complaints procedure, and following other processes and procedures that are needed to meet the requirements of this New Homes Quality Code (the code), they will become a registered developer.

Registered developers agree to follow the code and the New Homes Ombudsman Service, including accepting the decisions of the New Homes Ombudsman in relation to dealings with customers. If a registered developer does not meet the required standards, or fails to accept and act in line with the decisions of the New Homes Ombudsman, they may have action taken against them, including being removed from the register of registered developers.

The code sets out the requirements that registered developers must meet. The code may be updated from time to time to reflect changes to industry best practice as well as the decisions of the New Homes Ombudsman Service.

All homes built by registered developers must meet building-safety and other regulations. All registered developers should aim to make sure there are no snags or defects in their properties before the keys are handed over to a customer. If there are any snags or defects, these should be put right within the agreed timescales.

WHAT THE CODE COVERS

For the purposes of this code, 'customer' means a person who is buying or intends to buy a new home which they will live in or give to another person. (If a new home is being bought in joint names, 'the customer' includes all the joint customers). However, the New Homes Quality Board have also started work to consider other groups of customers and what they should be able to expect from a new home. This includes shared owners and people who are buying a new home to let to other people. Any changes the New Homes Quality Board make to the code to reflect the needs of other groups of customers will be developed through consultation, and they will continually assess and review the effectiveness of the code, and any new laws or regulations that apply. Other areas which are not covered by the code are claims for loss of property value or blight (where a property falls in value or becomes difficult to sell because of major public work in the area), personal injury or claims that are not covered by the scheme rules of the New Homes Ombudsman Service.



DAVID WILSON HOMES

WHERE QUALITY LIVES