



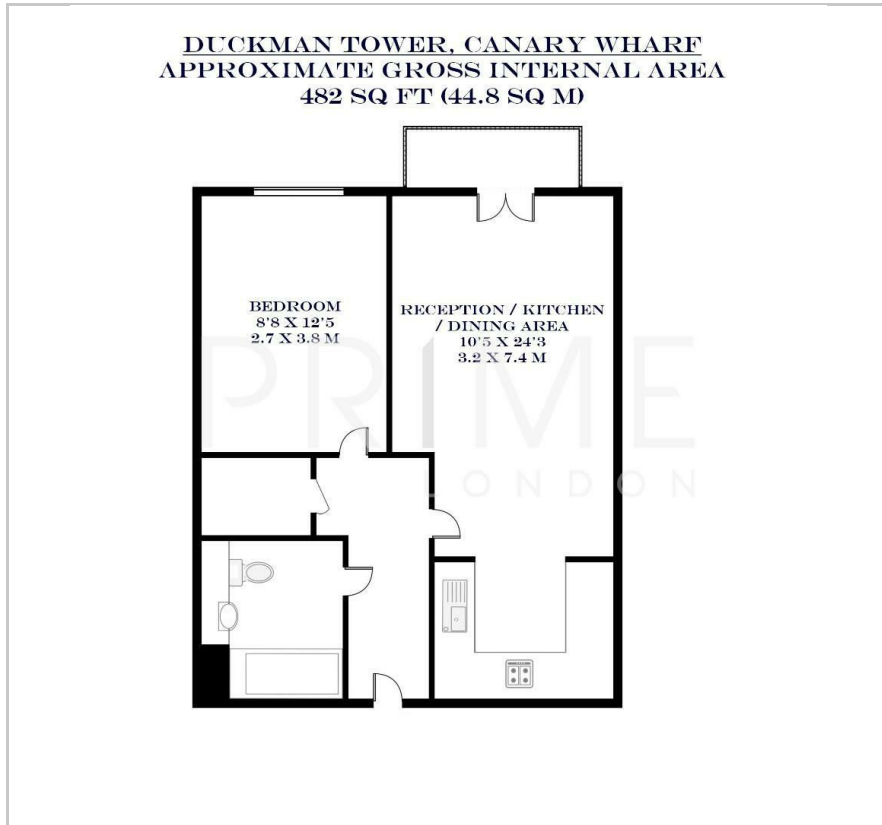
Duckman Tower

3 Lincoln Plaza, Canary Wharf, E14 9BN

Offers In Excess Of £350,000



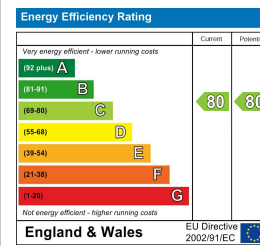
Floor Plan



Area Map



Energy Efficiency Graph



Viewing

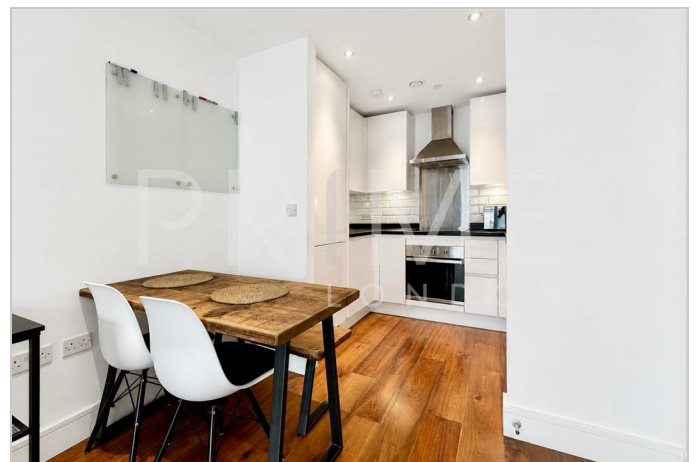
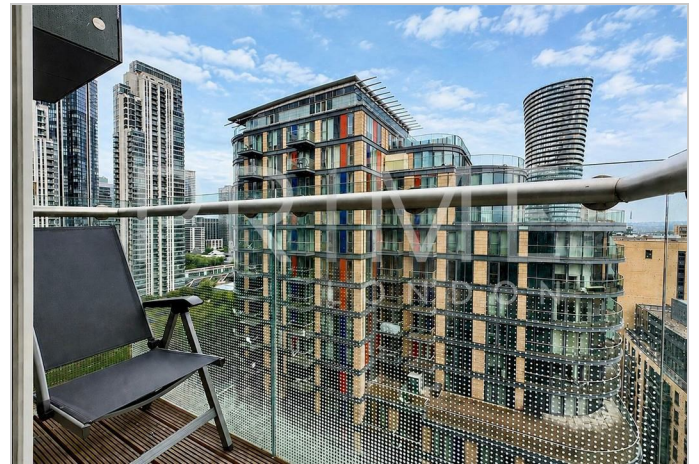
By appointment. Contact us on 0207 928 6663 if you wish to arrange a viewing appointment for this property, or require further information.

- One bedroom apartment
- Private balcony with stunning views
- Private cinema room
- 482 sq ft (44.8 sqm)
- 24 hour concierge
- Excellent transport links via Canary Wharf and South Quay stations

This well-proportioned one bedroom apartment spanning 482 sq ft (44.8 sqm) situated within Duckman Tower, part of the sought-after Lincoln Plaza development in Canary Wharf, is available for sale through Prime London.

The property features a spacious open-plan reception, kitchen and dining area, providing an excellent space for both everyday living and entertaining. Double doors open onto a private balcony, enhancing the sense of light and space. The apartment further comprises a generous double bedroom, a modern family bathroom, and useful hallway storage.

Residents of Lincoln Plaza benefit from an exceptional range of on-site amenities, including a 24 hour concierge service, a fully equipped gym, swimming pool, spa facilities, private cinema room, and a stunning 22nd-floor winter garden and roof terrace offering panoramic views across the London skyline. Ideally located, the development is within easy reach of Canary Wharf's extensive shopping, dining and transport connections, including the Jubilee Line, Elizabeth Line and DLR services.



These particulars, whilst believed to be accurate are set out as a general outline only for guidance and do not constitute any part of an offer or contract. Intending purchasers should not rely on them as statements of representation of fact, but must satisfy themselves by inspection or otherwise as to their accuracy. No person in this firm's employment has the authority to make or give any representation or warranty in respect of the property.