



Elkstone Covert BIRMINGHAM B14 5YL

for sale
£210,000



Property Description

Nestled at the end of a quiet cul-de-sac, this deceptively spacious home offers the perfect blend of privacy, convenience, and future potential. Ideally positioned with excellent transport links to the M42, M40, and M5, the property provides effortless access to Birmingham city centre and Birmingham Airport, making it an excellent choice for commuters and frequent travellers alike.

Well-served by public transport routes, the location ensures connectivity without compromising on tranquillity. Internally, this 'Tardis-like' home reveals a surprisingly generous layout, offering versatile living space suited to modern family life.

The property also presents exciting scope for further enhancement, with ample potential for extension (subject to the necessary planning permissions), allowing buyers to truly make the home their own. A rare opportunity to acquire a well-located, spacious property with room to grow.

Approach

Path leading to front door, front garden laid to lawn, UPVC porch door.

Hallway

UPVC front door leading to hallway, under the stair open storage, stairs to first floor

Downstairs Wc

W/C and wash hand basin

Kitchen Diner

Range of wall base units below, wood effect worktop above, incorporating stainless steel sink and drainer with mixer taps, space for appliances. Double glazed window to rear aspect, double glazed sliding patio doors leading to garden. Central heating radiator, space for dining table.

Livingroom

Double glazed window to side aspect, double glazed sliding door to rear aspect, central heating radiator.

Landing

Double glazed window to front aspect, loft access, built in storage cupboard

Bedroom One

Double glazed window to rear aspect and central heating radiator

Bedroom Two

Double glazed window to rear aspect, central heating radiator and built in storage cupboard.

Bedroom Three

Double glazed window to rear aspect and central heating radiator

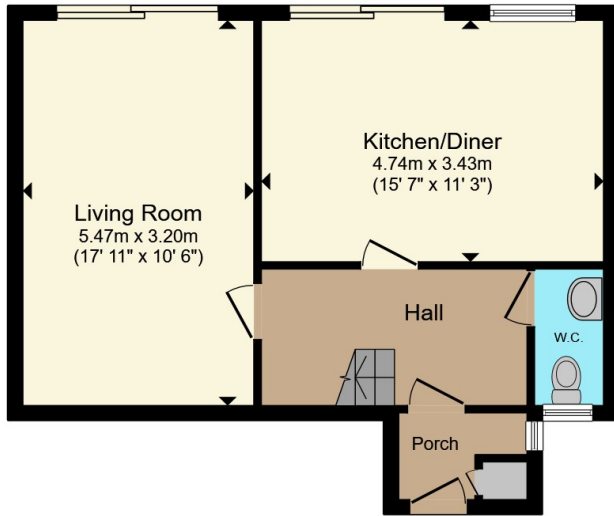
Bathroom

P-shaped bath with mixer taps and shower overhead, W/C and wash hand basin with mixer tap and vanity unit. Obscure double-glazed window to front aspect. Tiled to walls and central heating radiator.

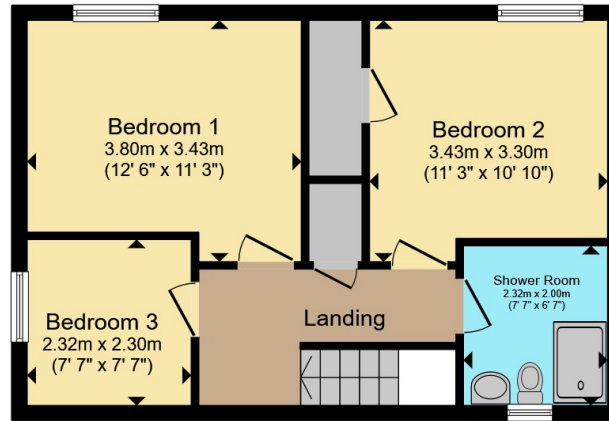
Garden

Slabbed Patio, with pathway leading to rear access. Laid to lawn with fence surround.





Ground Floor



First Floor



Total floor area 90.3 m² (972 sq.ft.) approx

This floor plan is for illustrative purposes only. It is not drawn to scale. Any measurements, floor areas (including any total floor area), openings and orientation are approximate. No details are guaranteed, they cannot be relied upon for any purpose and they do not form part of any agreement. No liability is taken for any error, omission or misstatement. A party must rely upon its own inspection(s). Powered by www.propertybox.io



To view this property please contact Burchell Edwards on

T 0121 733 3553
E shirley@burchelledwards.co.uk

183 Stratford Road Shirley
SOLIHULL B90 3AU

EPC Rating: C Council Tax
Band: B

Tenure: Freehold

view this property online burchelledwards.co.uk/Property/SHI208081



1. MONEY LAUNDERING REGULATIONS Intending purchasers will be asked to produce identification documentation at a later stage and we would ask for your co-operation in order that there will be no delay in agreeing the sale. 2. These particulars do not constitute part or all of an offer or contract. 3. The measurements indicated are supplied for guidance only and as such must be considered incorrect. Potential buyers are advised to recheck measurements before committing to any expense. 4. We have not tested any apparatus, equipment, fixtures, fittings or services and it is in the buyers interest to check the working condition of any appliances.

Burchell Edwards is a trading name of Connells Residential which is registered in England and Wales under company number 1489613, Registered Office is Cumbria House, 16-20 Hockliffe Street, Leighton Buzzard, Bedfordshire, LU7 1GN. VAT Registration Number is 500 2481 05.

See all our properties at www.burchelledwards.co.uk | www.rightmove.co.uk | www.zoopla.co.uk

Property Ref: SHI208081 - 0006