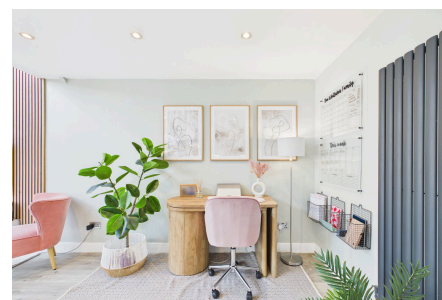


Ropeland Way, Horsham

Offers Over £550,000

 3  2  1



An Extended Detached Family Home tucked away at the end of a Small Cul De Sac, boasting an impressive 24ft x 19ft Kitchen Living Room, a landscaped West Facing Garden and Three Generous Bedrooms.

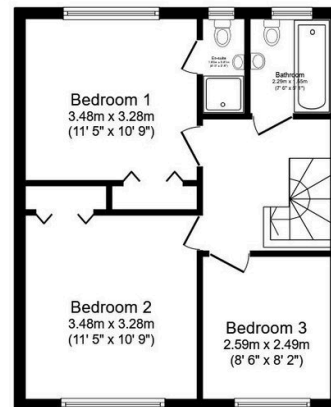
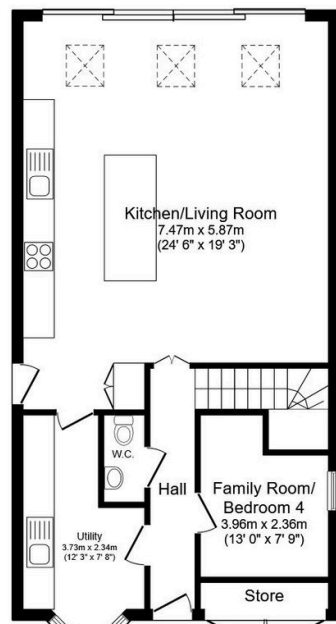
Tenure: Freehold

Council Tax Band: E

EPC: Current D - Potential B

Key Features

- Watch Our Video Tour
- 24ft x 19ft Kitchen Living Room
- Utility Room & Separate WC
- Close To Littlehaven Station
- Stylish Family Bathroom
- Extended Detached Family Home
- Separate Family Room/Bedroom 4
- Cul De Sac Location
- Three Generous Bedrooms
- En Suite To Principal Bedroom



Total floor area: 109.6 sq.m. (1,180 sq.ft.)

This floor plan is for illustrative purposes only. It is not drawn to scale. Any measurements, floor areas (including any total floor area), openings and orientations are approximate. No details are guaranteed, they cannot be relied upon for any purpose and do not form any part of any agreement. No liability is taken for any error, omission or misstatement. A party must rely upon its own inspection(s). Powered by www.Propertybox.io