



Cefn Road

£200,000

- Desirable village location
- Attractive views
- Ideal for families or first-time buyers
- Good access to local amenities and countryside
- Off Road Parking For One Vehicle
- EPC Rating: E



 3  1  2



About the property

3 Bedroom End-Terraced Home with private side entrance - Village Location - Long Garden - Attractive Views

Situated in a pleasant village location, this three-bedroom end-terraced property offers comfortable family living with the benefit of attractive views and a generous lawn garden.

The property features a welcoming living space and a practical layout throughout, making it ideal for families, first-time buyers, or those seeking a quieter village setting. The kitchen provides ample space for everyday use, while the bedrooms offer comfortable accommodation with good natural light.

Externally, the home benefits from a long lawn garden, perfect for relaxing outdoors, gardening, or family activities. As an end-terraced property, it also enjoys additional privacy and a pleasant outlook.

Located within a popular village setting, the property is within easy reach of local amenities, countryside walks, and transport links to nearby towns



Accommodation

Reception Room

23' 4" x 9' 10" (7.11m x 3.00m)

Utility Area

11' 2" x 5' 11" (3.40m x 1.80m)

Kitchen

11' 2" x 10' 6" (3.40m x 3.20m)

Bedroom One

12' 10" x 8' 10" (3.91m x 2.69m)

Bedroom Two

10' 2" x 10' 2" (3.10m x 3.10m)

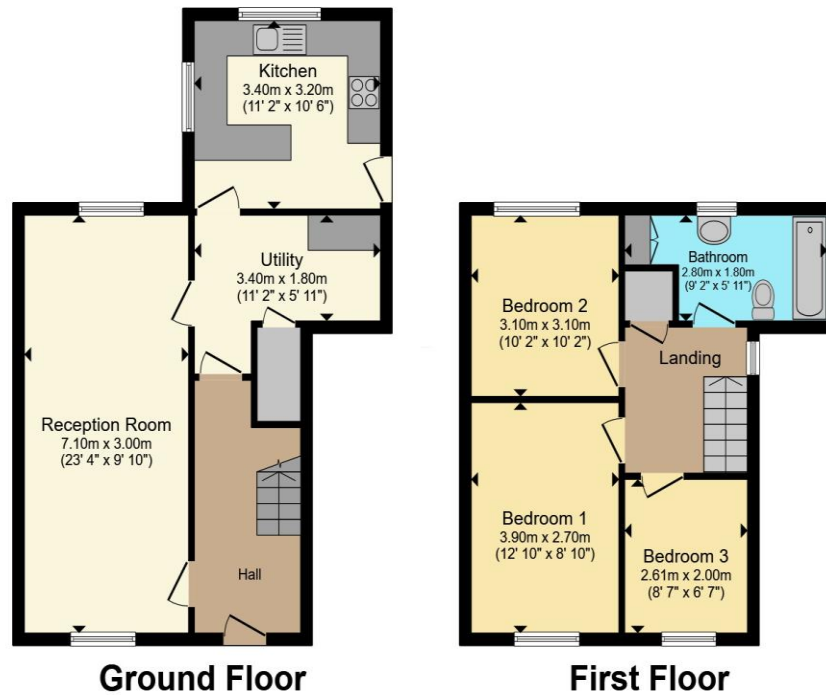
Bedroom Three

8' 7" x 6' 7" (2.62m x 2.01m)

01656 771600

porthcawl@peteralan.co.uk

Floorplan



Total floor area 88.1 m² (948 sq.ft.) approx

This floor plan is for illustrative purposes only. It is not drawn to scale. Any measurements, floor areas (including any total floor area), openings and orientation are approximate. No details are guaranteed, they cannot be relied upon for any purpose and they do not form part of any agreement. No liability is taken for any error, omission or misstatement. A party must rely upon its own inspection(s). Powered by www.propertybox.io



Important Information

Note while we endeavour to make our sales details accurate and reliable, if there is any point which is of particular interest to you, please contact the office and we will be pleased to confirm the position for you. We have not personally tested any apparatus, equipment, fixtures, fittings or services and cannot verify they are in working order or fit for their purposes. Nothing in these particulars is intended to indicate that carpets or curtains, furnishings or fittings, electrical goods (whether wired or not). Gas fires or light fittings or any other fixtures not expressly included form part of the property offered for sale. This computer generated Floorplan, if applicable, is intended as a general guide to the layout and design of the property. It is not to scale and should not be relied upon for dimensions. Tenure: We cannot confirm the tenure of the property as we have not had access to the legal documents. The buyer is advised to obtain verification from their solicitor or surveyor.

Peter Alan Limited is registered in England and Wales under company number 2073153, Registered Office is Cumbria House, 16-20 Hockliffe Street, Leighton Buzzard, Bedfordshire, LU7 1GN. VAT Registration Number is 500 2481 05. For activities relating to regulated mortgages and non-investment insurance contracts, Peter Alan Limited is an appointed representative of Connells Limited which is authorised and regulated by the Financial Conduct Authority. Connells Limited's Financial Services Register number is 302221. Most buy-to-let

