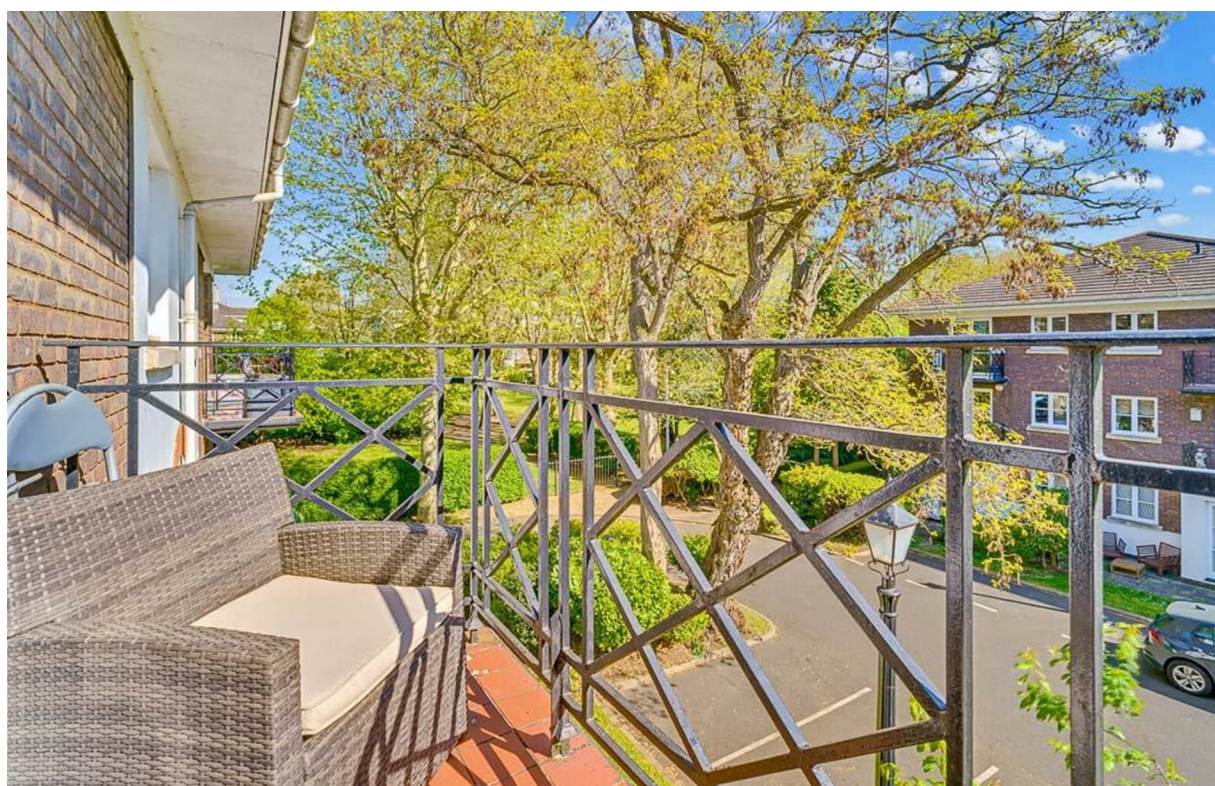


# Brompton Park

£399,950

BRIK



# Brompton Park Crescent

£399,950

Leasehold

0 BED

Studio

0000

SQ FT

0000

SQ M

The apartment itself is on the second floor and comprises a generous L-shaped studio room with a sleeping area, space for dining and reception area. There is a separate kitchen fitted with wall and base units and a full size bathroom. A private balcony offers views over Brompton Park Crescent and the communal gardens.

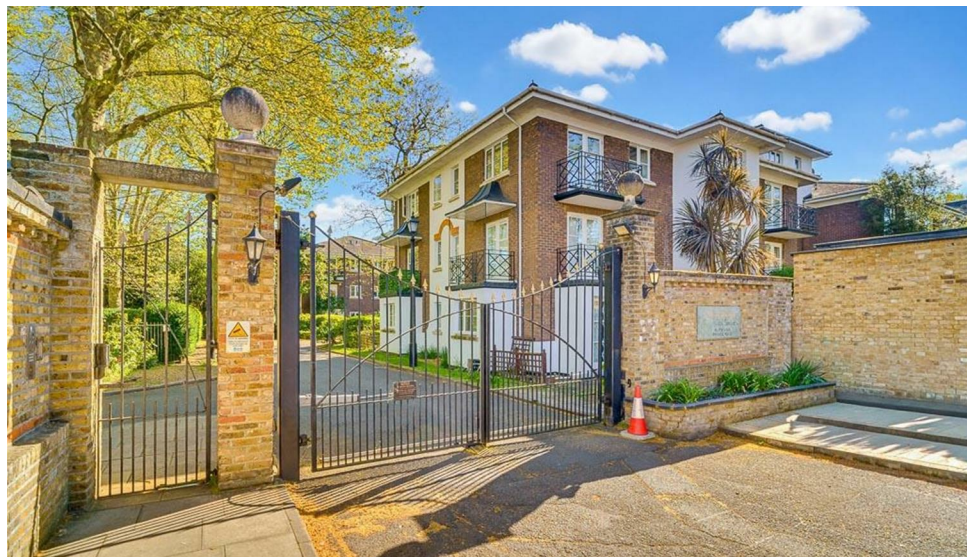
Brompton Park Crescent is a private gated development by Brompton Cemetery and is in a highly convenient location being only a short walk to the plethora of shops, cafes and restaurants of Fulham Broadway (Underground, District line Zone 2) and the overground (and additional underground station) of West Brompton (London Overground & National Rail, District Line, Zone 2)

- Studio apartment
- 2nd floor
- Balcony
- Secure gated development
- Use of swimming pool, sauna & steam room
- Off street parking space
- Council Tax band: D
- EPC rating: D

**MATHEW GOSS**

020 7384 6790

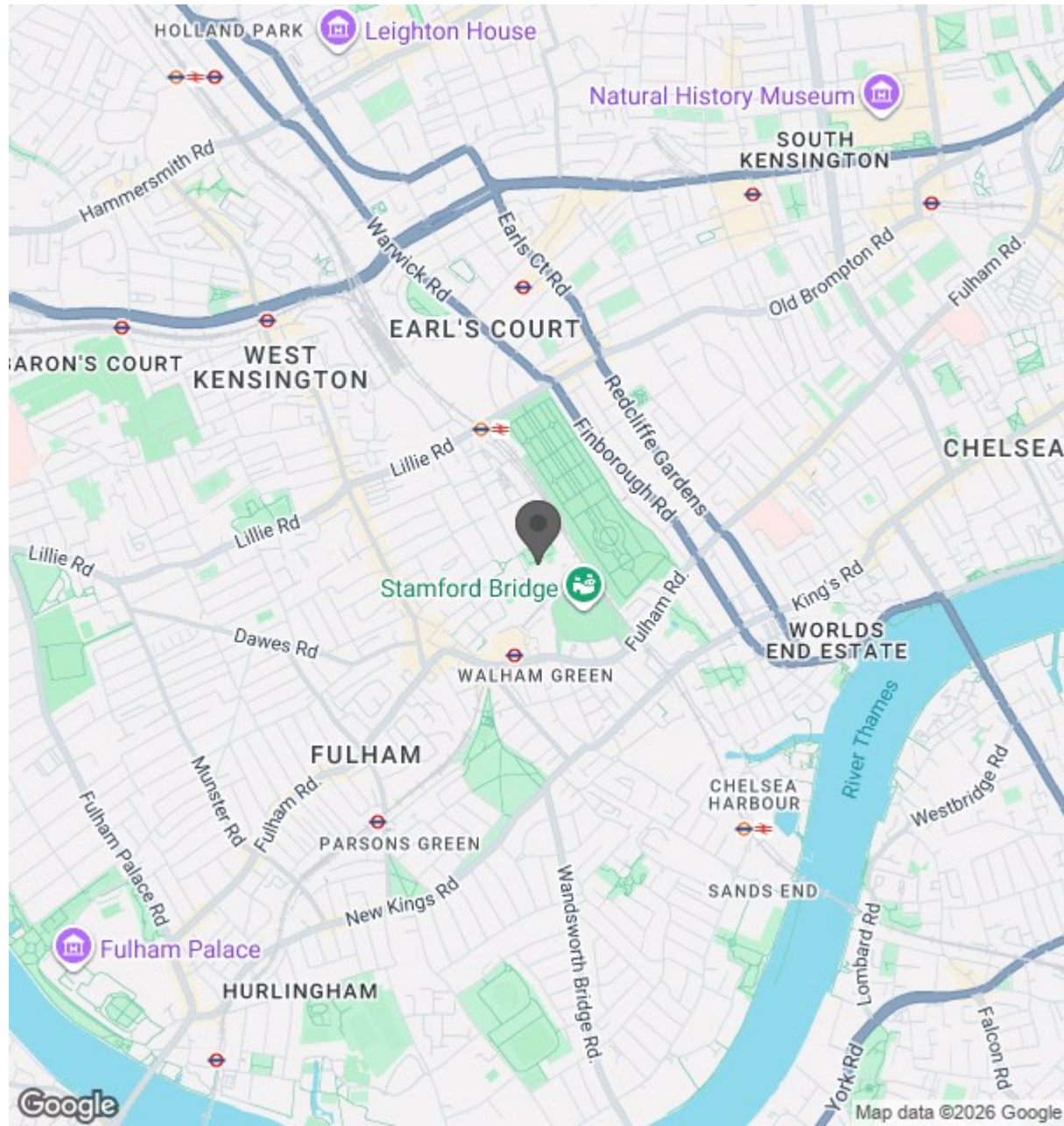
matthew@brik.co.uk







Location



BRIK

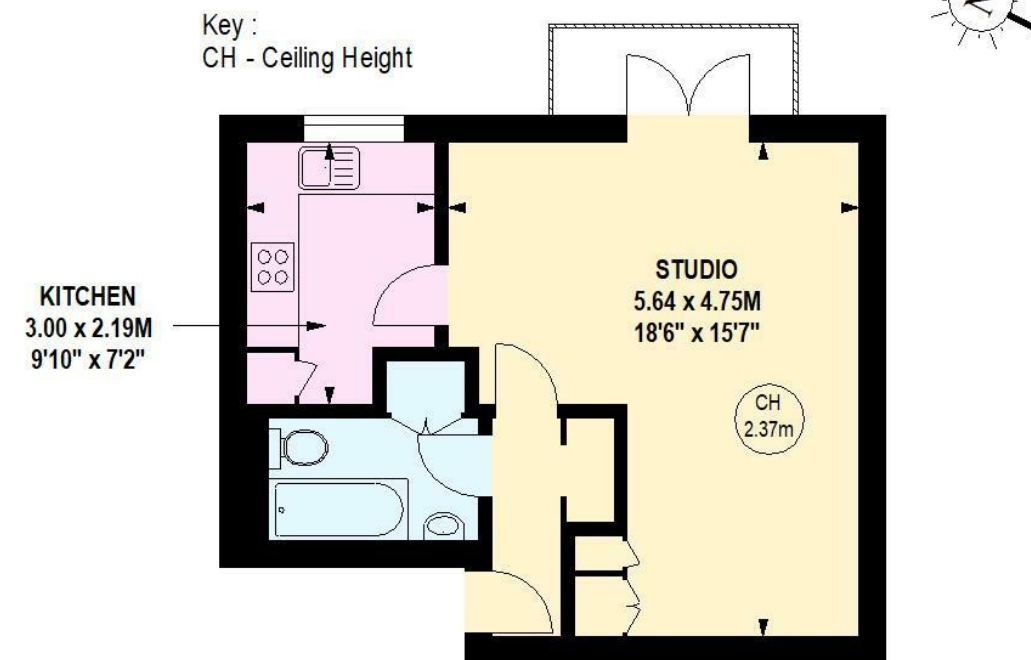
0000  
SQ FT

0000  
SQ M

## Brompton Park Crescent, SW6

Approximate gross internal area

37.53 sq m / 404 sq ft



### Second Floor

Although every attempt has been made to ensure accuracy, all measurements are approximate.  
This floorplan is for illustrative purposes only and not to scale.  
Measured in accordance with RICS standards.