



Abbott Road  
Alfreton



## Property Description

Hall and Benson are delighted to offer for sale this two bedroom detached bungalow located in the ever popular area of Abbott road, Alfreton. The well proportion home is being offered for sale with the benefit of no upward chain and is ideally situated with easy access to the A38, M1 motorway, local amenities and Alfreton town Centre. The accommodation briefly comprises; Entrance hall, breakfast kitchen, lounge, two double bedrooms and family bathroom. Outside the home benefits from potential off road parking to the front subject to planning permission and rear of the home and mature gardens and a driveway. Viewing essential to fully appreciate the accommodation on offer.

### Entrance Hall

The home is entered via a UPVC front door into the hallway with loft hatch access and doors leading to;

### Lounge

With a UPVC bay window to the front elevation, electric radiator, carpeted flooring, ceiling light and feature fireplace.

### Breakfast Kitchen

With UPVC double glazed windows to the side and rear elevation, UPVC door to the rear garden. The kitchen is fitted with a matching range of wall and base units with roll top work surface, electric oven and hob,

extractor fan , sink drainer unit and space for white goods.

### Bedroom One

With a UPVC bay window to the front elevation, electric radiator, carpeted flooring and ceiling light.

### Bedroom Two

With a UPVC double glazed window to the rear elevation, electric radiator, ceiling light and carpeted flooring.

### Bathroom

Fitted with a white three piece suite comprising of low level W/C, pedestal wash hand basin and shower cubicle with electric shower.

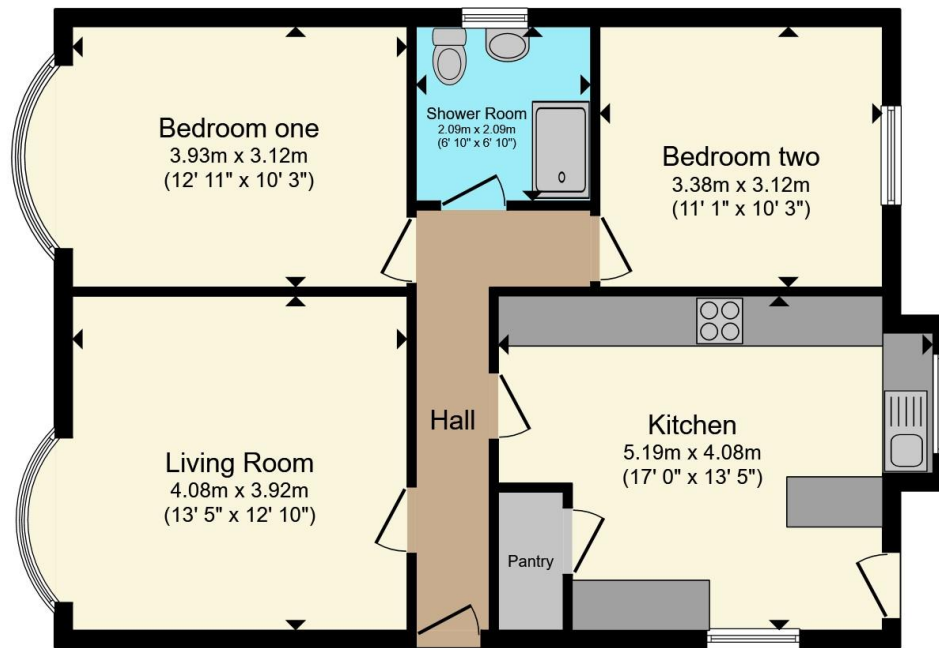
### Outside

The front of the home has a attractive front garden area and potential for off road parking. The rear of the home benefits from a driveway with ample off-road parking, a lawned garden area, timber shed and mature garden. Viewing essential.

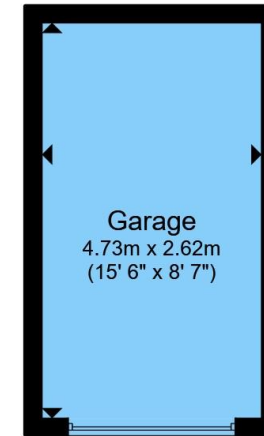








**Floor Plan**



**Garage**

Total floor area 85.1 m<sup>2</sup> (916 sq.ft.) approx

This floor plan is for illustrative purposes only. It is not drawn to scale. Any measurements, floor areas (including any total floor area), openings and orientation are approximate. No details are guaranteed, they cannot be relied upon for any purpose and they do not form part of any agreement. No liability is taken for any error, omission or misstatement. A party must rely upon its own inspection(s). Powered by [www.propertybox.io](http://www.propertybox.io)



To view this property please contact Hall & Benson on

**T 01773 521771**  
**E [alfreton@hallandbenson.co.uk](mailto:alfreton@hallandbenson.co.uk)**

22A High Street  
 ALFRETON DE55 7BN

EPC Rating: E Council Tax  
 Band: C

**view this property online [hallandbenson.co.uk/Property/ALF104175](http://hallandbenson.co.uk/Property/ALF104175)**

Tenure: Freehold



1. MONEY LAUNDERING REGULATIONS Intending purchasers will be asked to produce identification documentation at a later stage and we would ask for your co-operation in order that there will be no delay in agreeing the sale. 2. These particulars do not constitute part or all of an offer or contract. 3. The measurements indicated are supplied for guidance only and as such must be considered incorrect. Potential buyers are advised to recheck measurements before committing to any expense. 4. We have not tested any apparatus, equipment, fixtures, fittings or services and it is in the buyers interest to check the working condition of any appliances.

Hall & Benson is a trading name of Connells Residential which is registered in England and Wales under company number 1489613, Registered Office is Cumbria House, 16-20 Hockliffe Street, Leighton Buzzard, Bedfordshire, LU7 1GN. VAT Registration Number is 500 2481 05.

**See all our properties at [www.hallandbenson.co.uk](http://www.hallandbenson.co.uk) | [www.rightmove.co.uk](http://www.rightmove.co.uk) | [www.zoopla.co.uk](http://www.zoopla.co.uk)**

Property Ref: ALF104175 - 0005