



## LORRIMORE ROAD, SE17

£550,000

High ceilings  
Beautifully presented  
Top floor  
Excellent transport links  
Close to park  
Period building

@marshandparsons  
marshandparsons.co.uk

MARSH &  
PARSONS



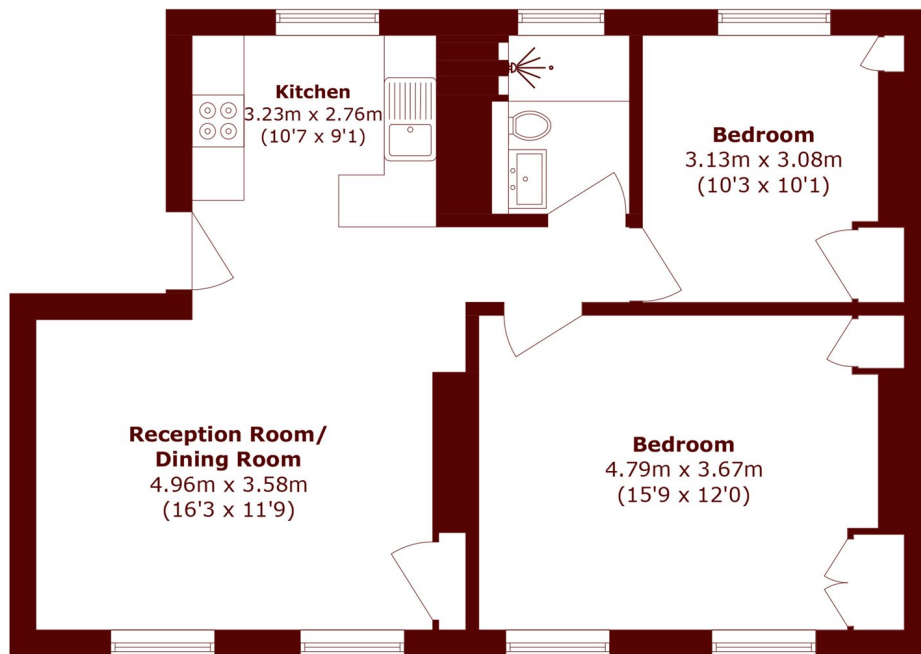
# ABOUT THE PROPERTY

A beautifully presented two bedroom Victorian conversion set on the top floor of an elegant period building on Lorrimore Road. Featuring high ceilings and an abundance of natural light, the property offers stylish contemporary living within a charming period setting. The accommodation includes a spacious open plan reception and kitchen area with rooftop views and a modern breakfast bar, ideal for entertaining. Both bedrooms are generous doubles with fitted wardrobes, complemented by a contemporary bathroom.

Ideally located close to Kennington Park, Kennington and Elephant & Castle stations, with an excellent selection of shops, cafés, restaurants, and amenities nearby.



# STEP INSIDE LORRIMORE ROAD



Total area (approx.): 68.2 sq. m (734.1 sq. ft)

**Kennington**  
020 7587 1533

Energy Rating: We aim to make our particulars both accurate and reliable. However, they are not guaranteed; nor do they form part of an offer or contract. If you require clarification on any points then please contact us, especially if you're traveling some distance to view. Please note that appliances and heating systems have not been tested and therefore no warranties can be given as to their good working order

**MARSH &  
PARSONS**