



RIVERHOMES

West London Branch
28 Thames Road
London
W4 3RJ

020 8995 0500
www.riverhomes.co.uk

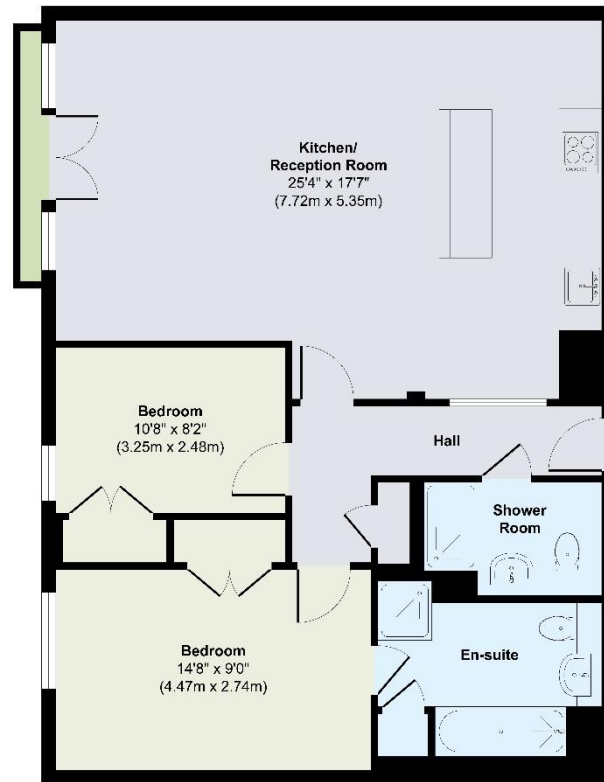
A beautifully refurbished two-bedroom apartment set within the sought-after riverside development of Ferry Quays, overlooking the River Thames in Brentford. A sleek, semi-open plan kitchen sits alongside, fully integrated, and thoughtfully designed for everyday living and entertaining. The principal bedroom includes a contemporary en-suite bathroom, while a second well-proportioned double bedroom is served by a separate shower room. Residents benefit from off-street parking, on-site portorage and a selection of restaurants and bars.

ENERGY PERFORMANCE CERTIFICATE

Score	Energy rating	Current	Potential
92+	A		
81-91	B		
69-80	C	78 C	78 C
55-68	D		
39-54	E		
21-38	F		
1-20	G		

KEY INFORMATION

Local authority:	London Borough of Hounslow
Internal area:	872 sq. ft. / 81 sq. m.
No. of bedrooms:	2
Council tax:	F - £3,012.85 per annum approx.
Lease length:	100 years remaining approx.
Service charge:	£3,800 per annum approx.
Estate charge:	£1,200 per annum approx.
Ground rent:	£450 per annum approx.



First Floor

