



## Heathfield Road, W3

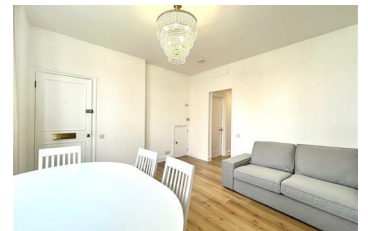
**£2,400 Per Month**

Newly refurbished and beautifully presented, this spacious two bedroom, two bathroom apartment sits on the sought after Heathfield Road in Acton.

The property offers a bright separate living room, ideal for both relaxing and entertaining, along with a well laid out kitchen. Both bedrooms are well proportioned and provide comfortable, practical living space, while the two modern bathrooms add further convenience.

Perfectly positioned just a five minute walk from Acton Town station, the apartment benefits from excellent transport links while remaining on a quiet residential road away from the hustle and bustle.

A great option for professionals or a small family looking for a well located and comfortable home.



Energy Efficiency Rating		Environmental Impact (CO <sub>2</sub> ) Rating	
Current	Potential	Current	Potential
<b>A</b>	<b>A</b>	<b>A</b>	<b>A</b>
72	72	72	72
<small>Low energy efficient - lower running costs</small> <small>Not energy efficient - higher running costs</small>		<small>Low environmental impact - lower CO<sub>2</sub> emissions</small> <small>High environmental impact - higher CO<sub>2</sub> emissions</small>	
<small>England &amp; Wales</small> <small>2008/1/EC</small>		<small>England &amp; Wales</small> <small>2009/1/EC</small>	