



FOR SALE

Oakfield Crescent, Knottingley

Offers in excess of £115,000

Two Bedroom Semi Detached

- Semi - Detached
- Large Driveway
- Enclosed Garden
- Modern Bathroom
- Gas Central Heating
- Lawn and Decking...
- Tastefully Decorated
- Double Glazing

A well presented two bedroom semi detached home positioned on Oakfield Crescent in Knottingley. The property is tastefully decorate and new carpets throughout and can be moved into with no works required. Comprises in brief: - entrance hallway, wc/cloaks, kitchen diner and a lounge. First floor: - landing, two large bedrooms and a bathroom. Benefits from double glazed windows and gas central heating. Externally a driveway provides off road parking for multiple vehicles. To the rear a fully enclosed garden, decking area and outbuildings. Call Tudor Sales & Lettings today for more information or to arrange a viewing!



Kitchen

14.7x 9.0ft (4.4m x 2.7m)

Fitted with a range of contemporary wall and base units. Laminated worktops. Sink with flexi chrome tap. Integrated oven and gas hob. Tiled splashback. Plumbing for washing machine. Space for free standing fridge freezer. Laminated flooring. Central heating radiator. Double glazed French doors and window to rear. With W.C leading off kitchen and large pantry.



Lounge

11.6x 15.1ft (3.5m x 4.6m)

A tastefully decorated lounge. Newly carpeted. Central heating radiator. Large bay window.



Bedroom 1

17.4x 11.4ft (5.3m x 3.5m)

Expansive master bedroom can be split in to two bedrooms if needed 3 bed. Central heating radiator & two large windows allow for plenty of natural light.



Bedroom 2

11.6x 10.5ft (3.5m x 3.2m)

Central heating radiator. Double glazed window. Original built in storage cupboard.



Bathroom

7.1x 5.9ft (2.1m x 1.8m)

Three piece suite comprising of: - 'P' shaped bath with shower over. Push button wc. High gloss vanity unit with chrome taps. Floor to ceiling tiled walls. Tiled flooring. Central heating vertical column radiator.



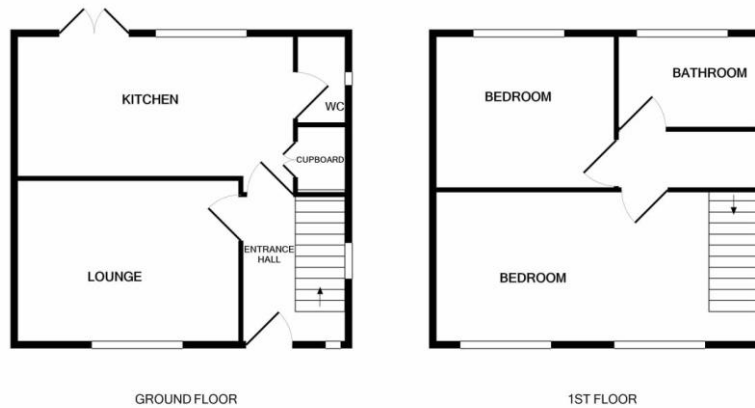
External

0.0x 0.0ft (0.0m x 0.0m)

Decked and lawned area with large outbuildings to the rear. Side Access too providing plenty of storage. Potential to extend subject to planning,

xft (m x m)

xft (m x m)



Whilst every attempt has been made to ensure the accuracy of the floor plan contained here, measurements of doors, windows, rooms and any other items are approximate and no responsibility is taken for any error, omission, or mis-statement. This plan is for illustrative purposes only and should be used as such by any prospective purchaser. The services, systems and appliances shown have not been tested and no guarantee as to their operability or efficiency can be given.
Made with Metropix ©2020

Consumer Protection from Unfair Trading Regulations: Any areas, measurements or distances are approximate. Land measurements are provided by the vendor and buyers are advised to obtain verification from their solicitor. The text, photographs and plans are for guidance only and are not necessarily comprehensive. Items shown in the property photographs are not included unless specifically mentioned within the sales particulars although they may be available by separate negotiation. Tudor Sales & Lettings Ltd cannot verify that the fixtures and fittings, equipment or services are in working order or fit for the purpose and buyers are advised to obtain verification from their solicitor. The tenure of a property is based upon information supplied by the seller and buyers are advised to obtain verification from their solicitor.